

Weekly Weather Outlook for Belize

Valid Time: May 28 – June 4, 2012

Issued: 5:00 am Monday, May 28, 2012

Feature(s) of Interest:

Two systems were responsible for the outbreaks of showers and thunderstorms last week and over the weekend. The first was a persistent low pressure area over and just offshore Belize that eventually drifted NE towards Cuba by late Wednesday. While, in the upper atmosphere, a westward drifting short-wave trough moved over Belize on Sunday and its axis now extends from NW Bahamas south-westward across the eastern Gulf of Mexico and central Yucatan Peninsula and Guatemala. This feature is forecast to continue its westwards displacement as an upper anticyclone migrates westward over northern Central America by Thursday of this week.

A weak tropical wave will make its way westward over the central and western Caribbean this week, reaching the Yucatan and Belize coasts by late Wednesday. Otherwise, the airflow in the NW Caribbean will become drier in a weak SE'ly current as we approach the weekend. Showers may likely be on the increase once again on Sunday afternoon and Monday.

Daily rainfall accumulations will be in the range of 0.25-0.50 of-an-inch over north-western and northern Belize on Monday, Tuesday and Wednesday of this week, with amounts of 0.50-0.75 of-an-inch in the higher terrain and some parts of the coast. Daily accumulations will decrease on Thursday through most of the weekend over the country as the airflow becomes drier and more stable. We can expect daily totals of 0.10-0.25 of an inch especially in the N and NW regions.

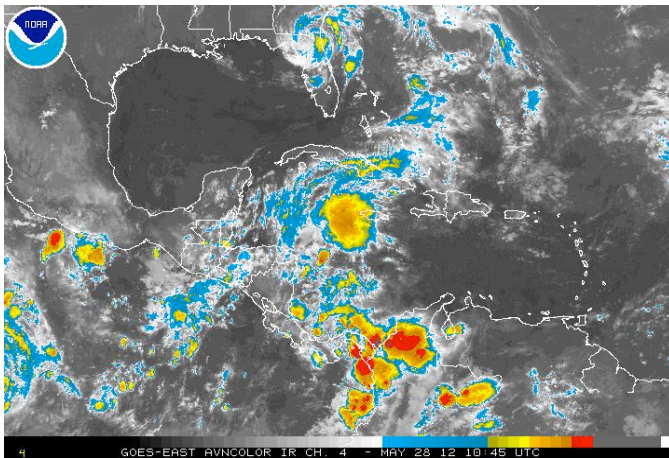
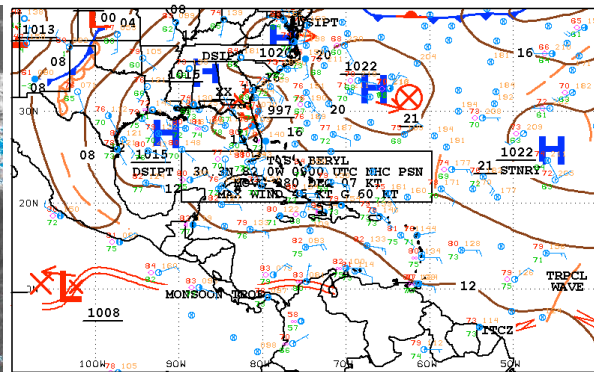


Fig. 1a

Fig. 1a GOES IR Satellite picture for 4:45 am, Monday, May 28, 2012, showing a large cluster of thunderstorms over and just south of Jamaica. Scattered convection noted over northern and southern Belize. **Fig. 1b** is the Surface map for 3:00 am, May 28, 2012, showing tropical storm Beryl weakening as it moves over land over northern Florida.



06Z SOUTHWEST NORTH ATLANTIC SFC ANALYSIS NATIONAL HURRICANE CENTER
ISSUED: MIAMI, FLORIDA
MAY 28 08:11:31 UTC 2012 BY TAFB ANALYST: CW
COLLABORATING CENTERS: NHC OPC HPC

Fig. 1b

Tropical Cyclone Outlook:

The models are not forecasting any tropical cyclone formation over the Caribbean during the next five days.

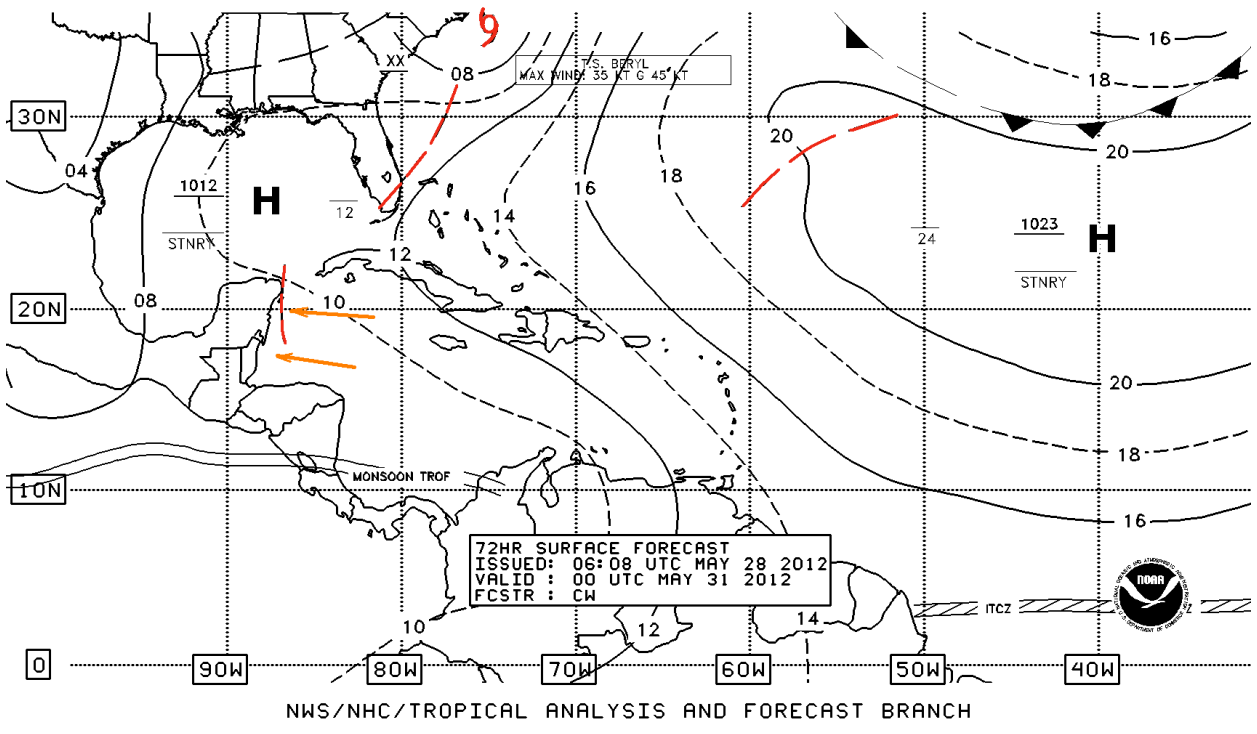


Fig. 2 NHC 72-hour forecast surface map valid for 6:00 pm Thursday, May 31, 2012 showing weak tropical wave approaching Yucatan and northern Belize.

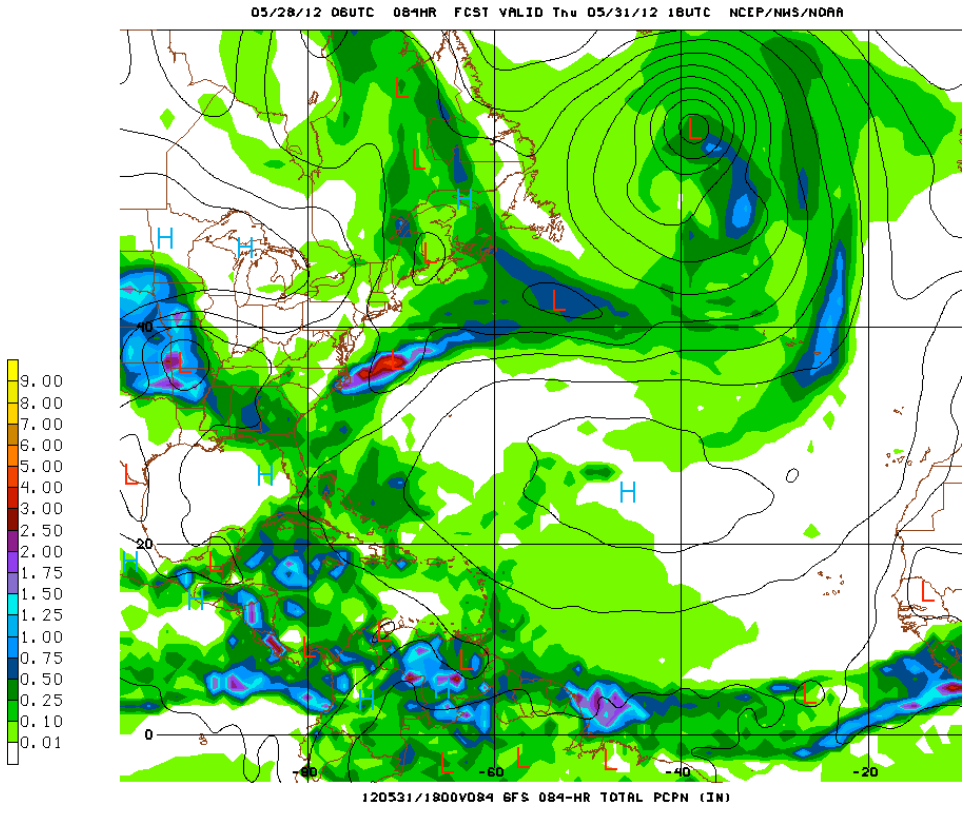


Fig. 3 84-hour rainfall projection of the GFS model, valid for 6:00 am Thursday, May 31, 2012 showing previous 24-hour rainfall accumulations of 0.25-0.50 inches over northern and north-western Belize.

05/28/12 06UTC 10BHR FCST VALID FRI 06/01/12 18UTC NCEP/NWS/NDAA

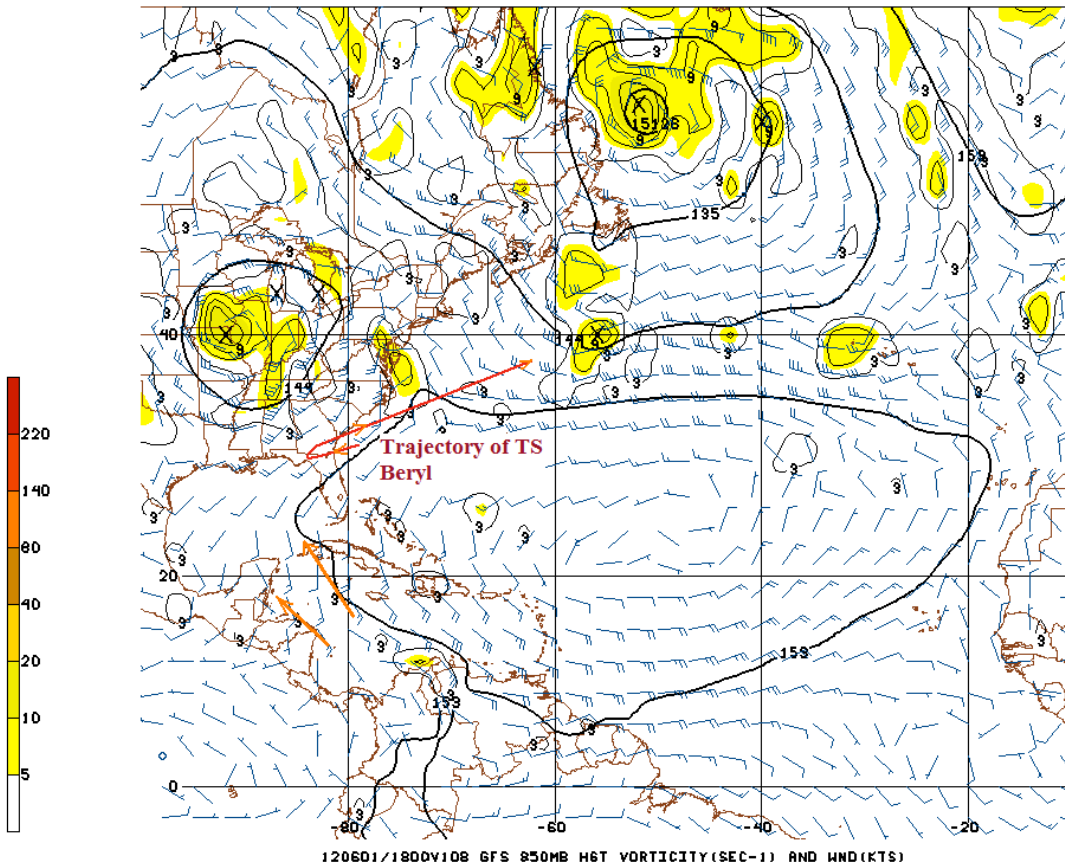


Fig. 4 GFS 850 mb (5,000ft) level vorticity projection valid for 12:00 pm Friday, June 1, 2012 showing drier SE'ly airflow over Belize, and the trajectory of Tropical Storm Beryl heading on a NE'ly direction after exiting the Alabama coast.

Belize Five-day Outlook for Agriculture and Industry...

Mon	Tue	Wed	Thu	Fri	Sat	Sunday
May 28, 2012	May 29, 2012	May 30, 2012	May 31, 2012	June 1, 2012	June 2, 2012	June 3, 2012
Cloudy with sunny spells. A few showers & thunderstorms.	Sunny with cloudy spells. A few showers & thunderstorms.	Sunny with cloudy spells. Few moderate showers.	Sunny with cloudy spells. Few moderate showers.	Mostly sunny with isolated showers.	Mostly sunny with isolated showers.	Sunny with cloudy spells. Few moderate showers.
Rainfall: 0.25-0.50 of-an-inch	Rainfall: 0.25-0.50 of-an-inch	Rainfall: 0.50-0.75 of-an-inch	Rainfall: 0.25-0.50 inch	Rainfall: 0.10-0.25 of-an-inch	Rainfall: 0.10-0.25 of-an-inch	Rainfall: 0.25-0.50 inch

Monday
May 28, 2012

R. Trues, Agrometeorologist/Hydrologist