

WEEKLY WEATHER OUTLOOK BELIZE, CENTRAL AMERICA

PERIOD: Monday-Monday, Dec. 31 2012 to Jan. 7, 2013

DATE ISSUED: Monday, Dec. 31, 2012 — 7:00 pm

RFrutos

SYNOPSIS: A high pressure system centered in the SW Atlantic just west of Bermuda is generating a moist north-easterly airflow over the western Caribbean and Belize. This high is forecast to drift southeastward over the next 48 to 72 hours, causing the airflow over the NW Caribbean to veer to the east and then to the ESE by Thursday and Friday of this week.

Another cold front will move off the Texas coast late New Year day, moving rapidly across the NW and central Gulf of Mexico. However, the cold front will stall in the SW Gulf of Mexico on Thursday. A new surge of cold arctic air will reinforce the continental high pressure system behind the cold front, which will then push the system across the eastern Gulf of Mexico and across NW Yucatan by late Saturday. The GFS model extended forecast move this cold front across Yucatan and Belize by late Sunday and early Monday of next week.

The rains will gradually die off later in the morning on New Year day, giving way to brighter weather with only isolated showers on Wednesday through Friday. Showers with possible thunderstorms will likely begin developing in the north and NW on Saturday, spreading over the rest of the country later on Saturday evening and on Sunday, as the next cold front approaches and cross the country of Belize. Cooler and gusty northerly winds will set in on Saturday morning through early Sunday.

Daily rainfall rates over the sea and coastal regions of Belize will be ranging from 0.25-0.50 of-an-inch on Monday through early Tuesday, New Year Day. Rainfall will then decrease later on Tuesday, with daily totals ranging from 0.10-0.25 of-an-inch over some areas of the hills and in the south. Rainfall will be minimal over most areas on Wednesday through Friday. Rainfall rates will increase on Saturday through Monday, with daily totals of 0.25-0.75 of-an-inch in some localities of the north and the central highlands

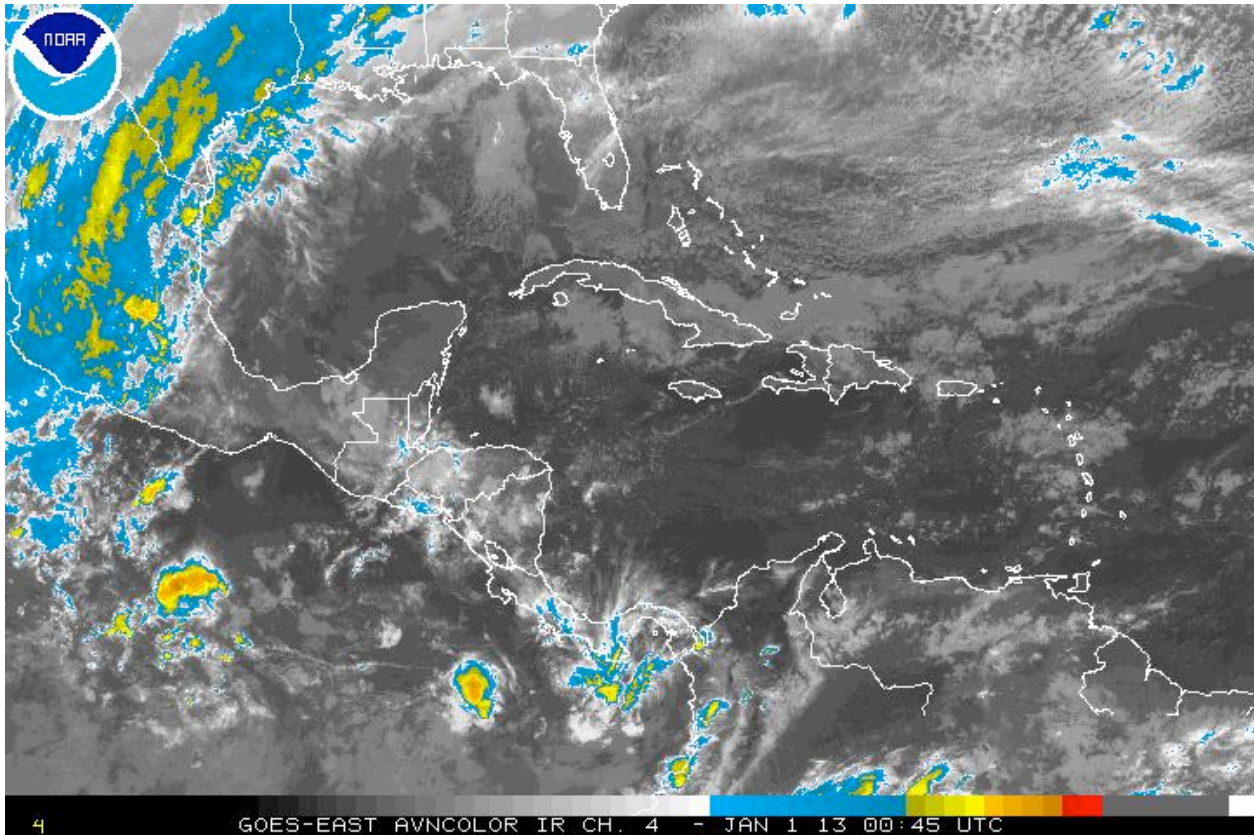


Figure 1 GOES 13 IR Satellite picture for 6:45 pm, Monday, Dec. 31, 2012, showing scattered moderate rain showers in the Gulf of Honduras and southern Belize, which is being generated by a moist NE'ly airflow.

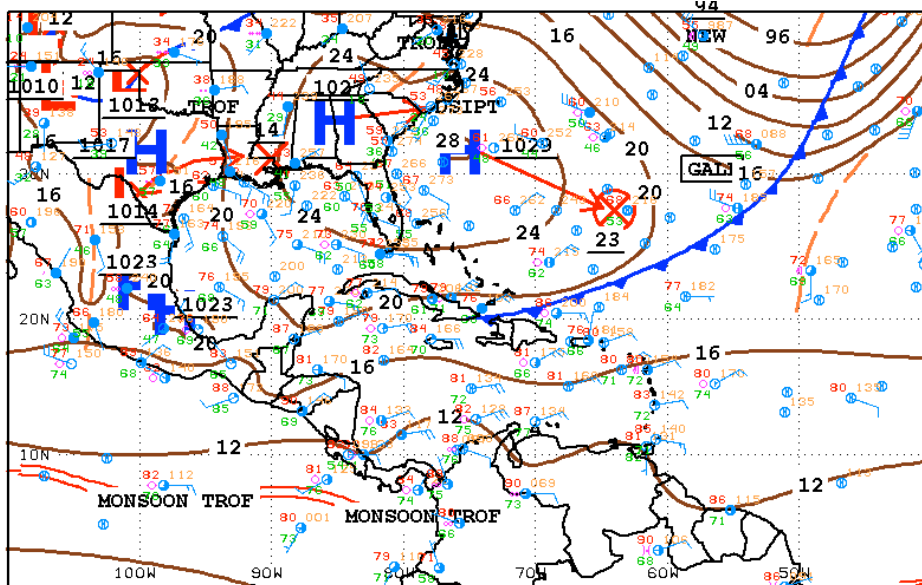


Figure 2 NHC surface isobaric map valid for 3:00 pm Monday, Dec 31, 2012, showing a 1029 mb high pressure system centered in the western Atlantic, and drifting ESE. A cold front extends across the north-central Atlantic, SW to eastern Cuba; the southern portion is diffused and dissipating in the western Caribbean.



18Z SOUTHWEST NORTH ATLANTIC SFC ANALYSIS
 ISSUED:
 Mon Dec 31 20:35:43 UTC 2012

NATIONAL HURRICANE CENTER
 MIAMI, FLORIDA
 BY TRFB ANALYST: MT/CW
 COLLABORATING CENTERS: NHC OPC HPC

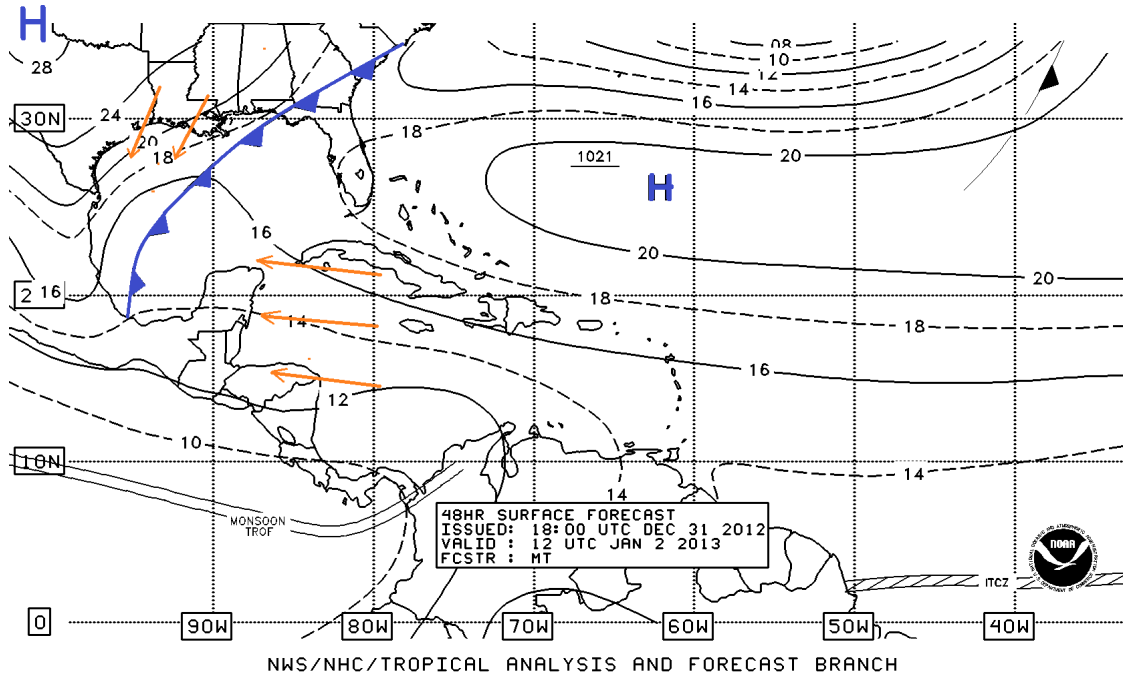


Figure 3 NHC 48-hr forecast surface map, valid for 6:00 am Wednesday, Jan. 2, 2013, showing a cold front extending from the Florida Panhandle SSW across the central Gulf of Mexico to the western Bay of Campeche.

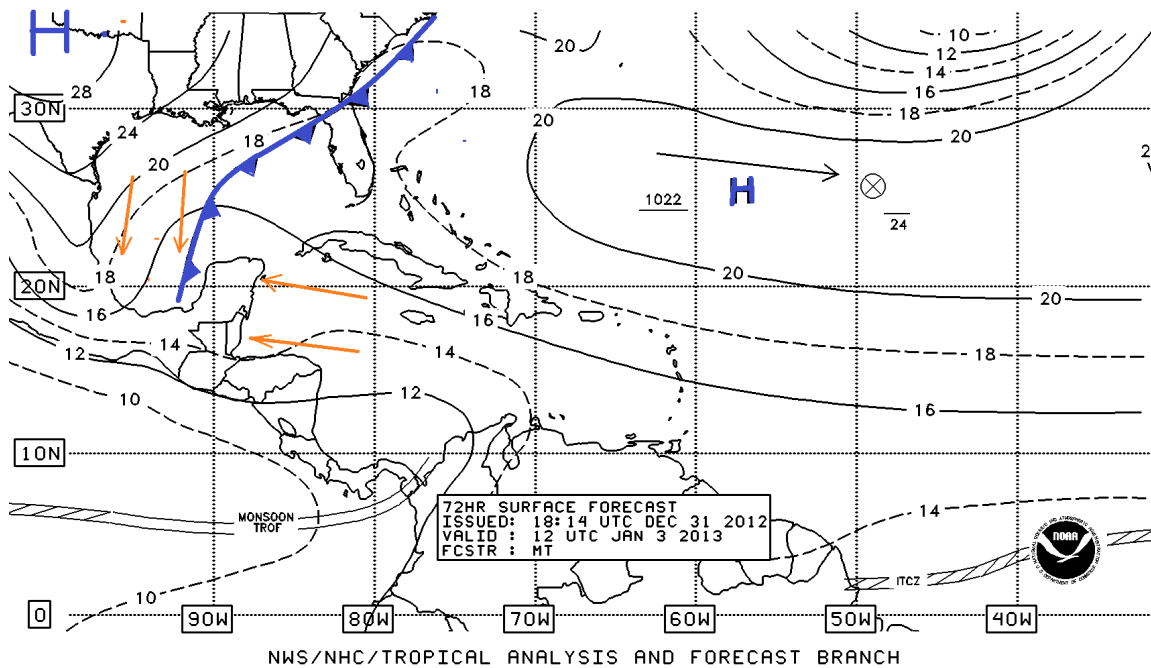


Figure 4 NHC 72-hr forecast surface map, valid for 6:00 am Thursday, Jan. 3, 2013, showing the cold front extending from northern Florida SSW across the Gulf of Mexico to near the western coast of the Yucatan Peninsula.

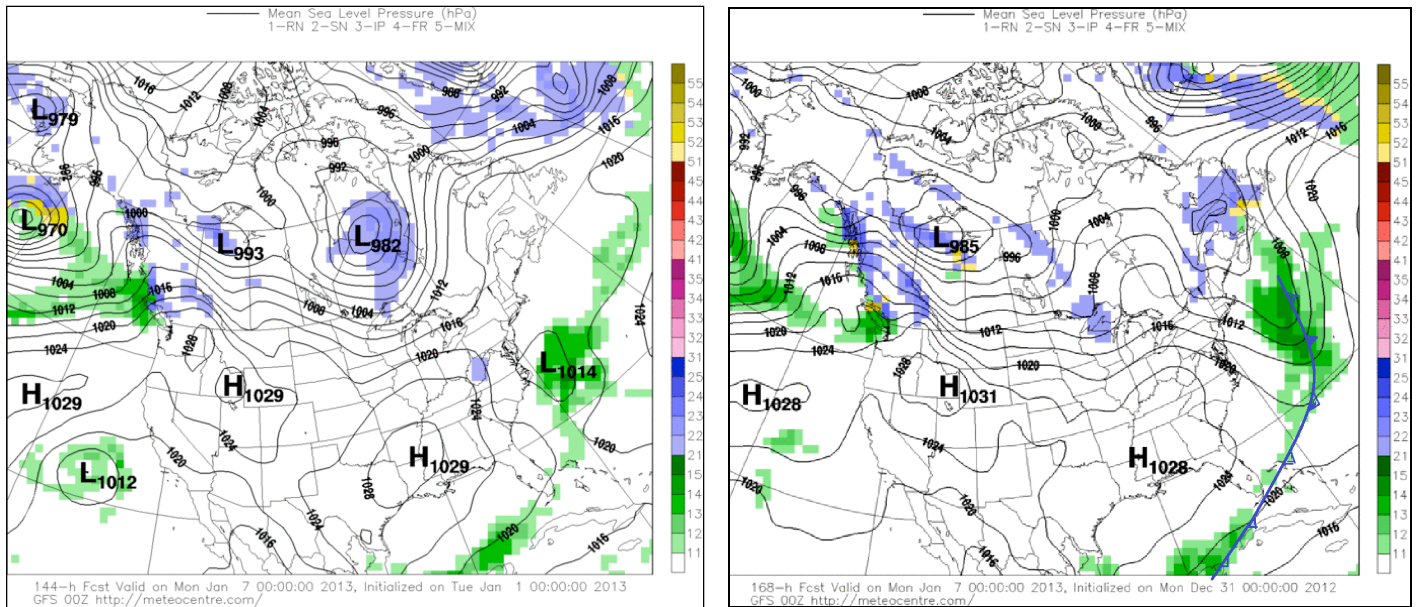


Figure 5a & 5b shows the GFS Model 144 hr and 168 hr forecast surface maps valid for 6:00 pm Saturday and 6:00 pm Sunday, Jan 5-6, 2013, respectively, showing rain showers over Yucatan and Belize associated with a cold front moving across the region. A cool and brisk northerly wind will be streaming southwards around a continental high centered over the Gulf coast of Louisiana.

Belize Seven-day Outlook for Agriculture and Industry...

Mon Dec 31, 2012	Tue Jan 01, 2013	Wed Jan 02, 2013	Thu Jan 03, 2013	Fri Jan 04, 2013	Sat Jan 05, 2013	Sun Jan 06, 2013
Mostly cloudy and mild. Moderate showers over most districts and coastal waters	Sunny with cloudy spells and mild. Light showers and rain, mostly south & hills	Sunny with cloudy spells. Isolated showers	Sunny with cloudy spells. Isolated showers.	Sunny with cloudy spells. Few light showers mainly north and hills	Mostly cloudy and cool. Moderate showers and rain	Cloudy and cool. Moderate to heavy showers over most districts
Rainfall: 0.25-0.50 of-an-inch	Rainfall: 0.10-0.25 of-an-inch	Rainfall: 0.01-0.10 of-an-inch	Rainfall: 0.01-0.10 of-an-inch	Rainfall: 0.10- 0.25 of-an-inch	Rainfall: 0.25-0.50 of-an-inch	Rainfall: 0.50-0.75 of-an-inch