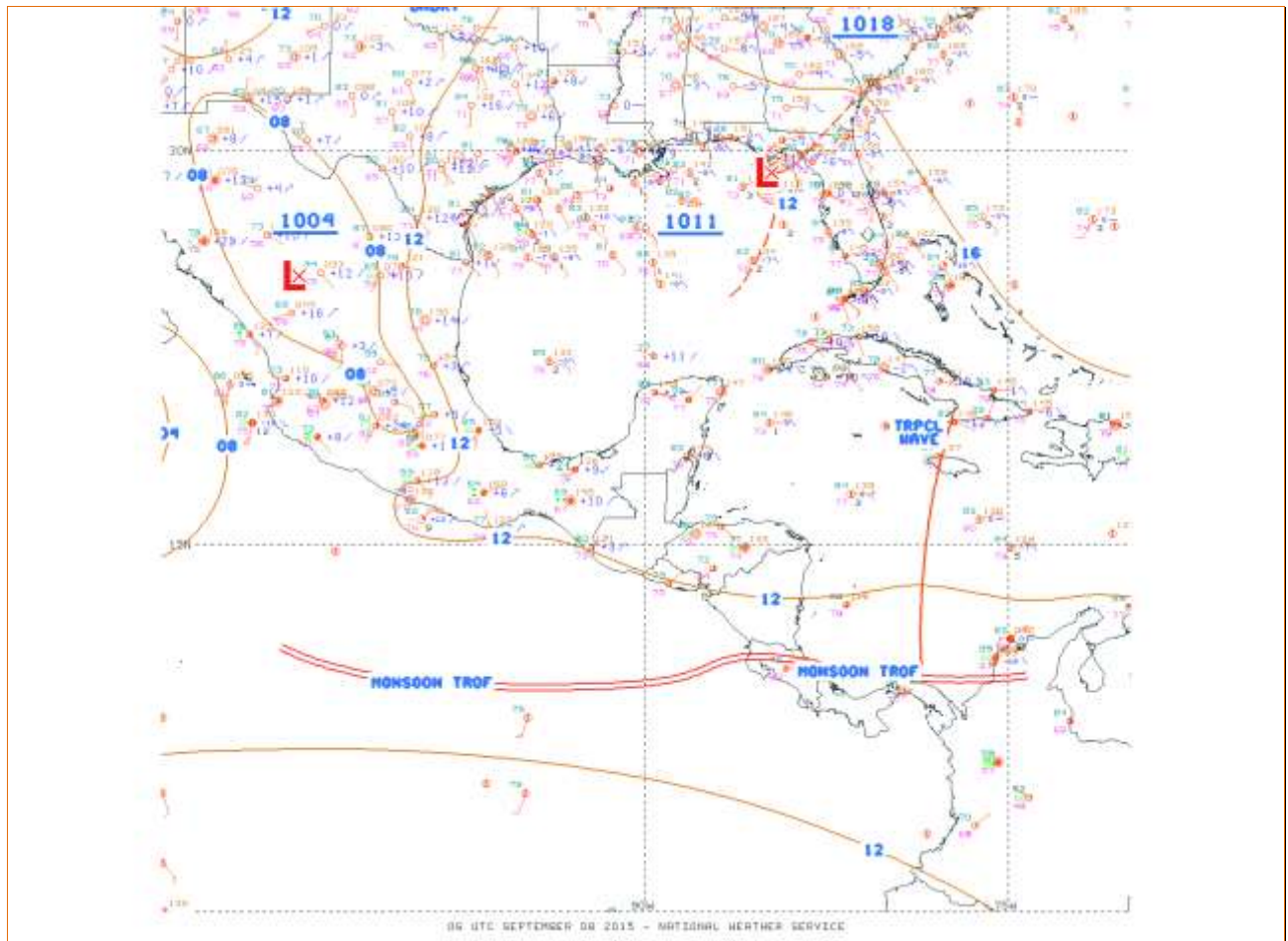


TEN DAY WEATHER OUTLOOK: Belize, Central America

Valid: Tuesday 1500Z Sep. 8, 2015 Until Friday 1500Z Sep. 18, 2015.

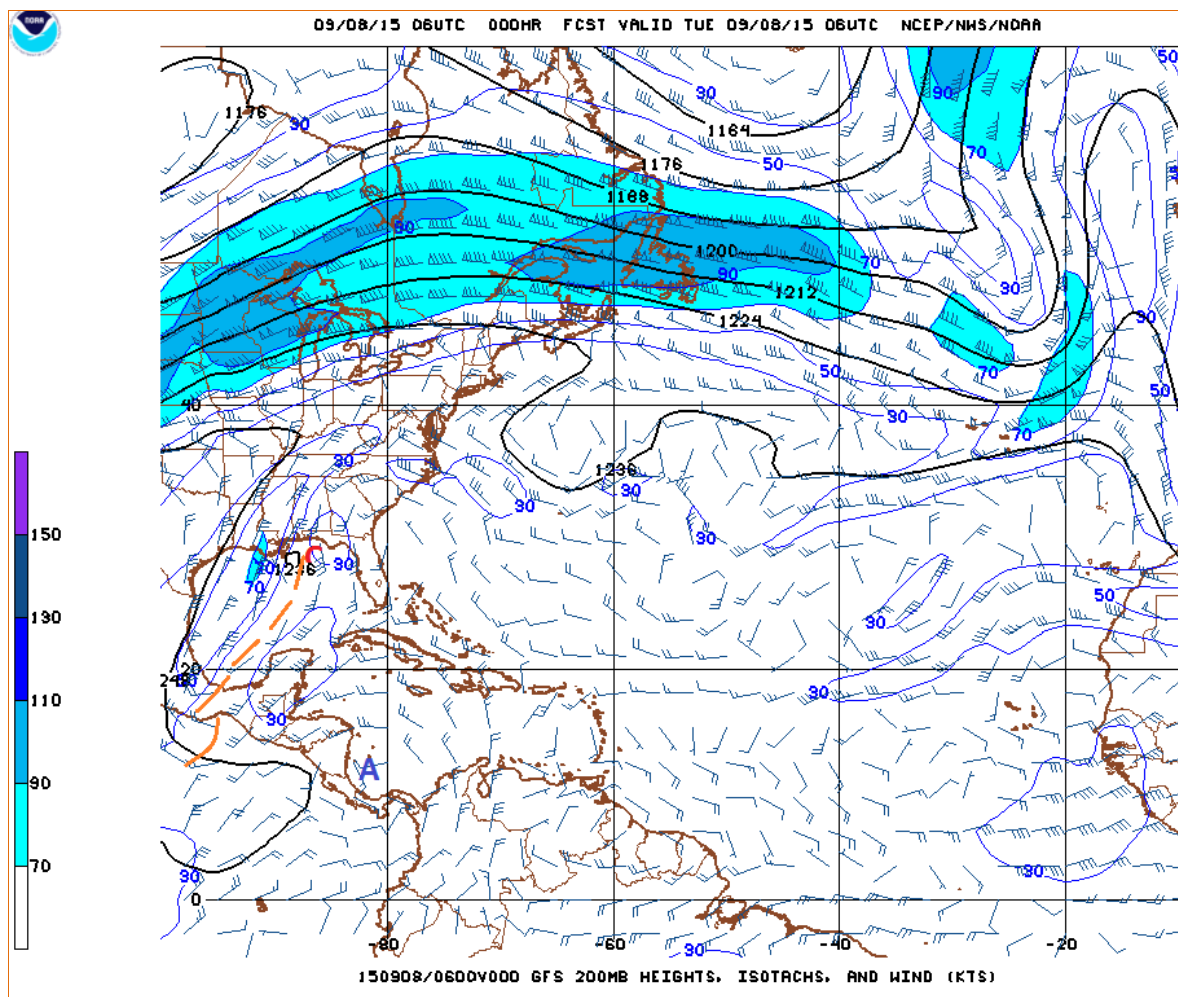
Ramón Frutos

Map 1: Surface Isobaric Map for 12:00 am, Sep. 8, 2015, showing a tropical wave moving into the NW Caribbean.



Synopsis: An eastward moving tropical wave in the southern and central Gulf of Mexico is generating scattered convection over the Bay of Campeche, Yucatan and Belize. A westward moving tropical wave entering the NW Caribbean this morning (Map 1) will reach Belize on Wednesday morning, increasing the instability over our area. This will generate some refreshing and welcoming showers across the country, after an extended mid-summer drought conditions that ravaged the region through August and early September.

Rainfall rates will be ranging from: 0.10 – 0.25 of-an-inch mostly over the sea and coast today through Wednesday, increasing to rates of 0.75 – 1.00 inch on Wednesday night through Thursday. Showers will decrease on Friday.

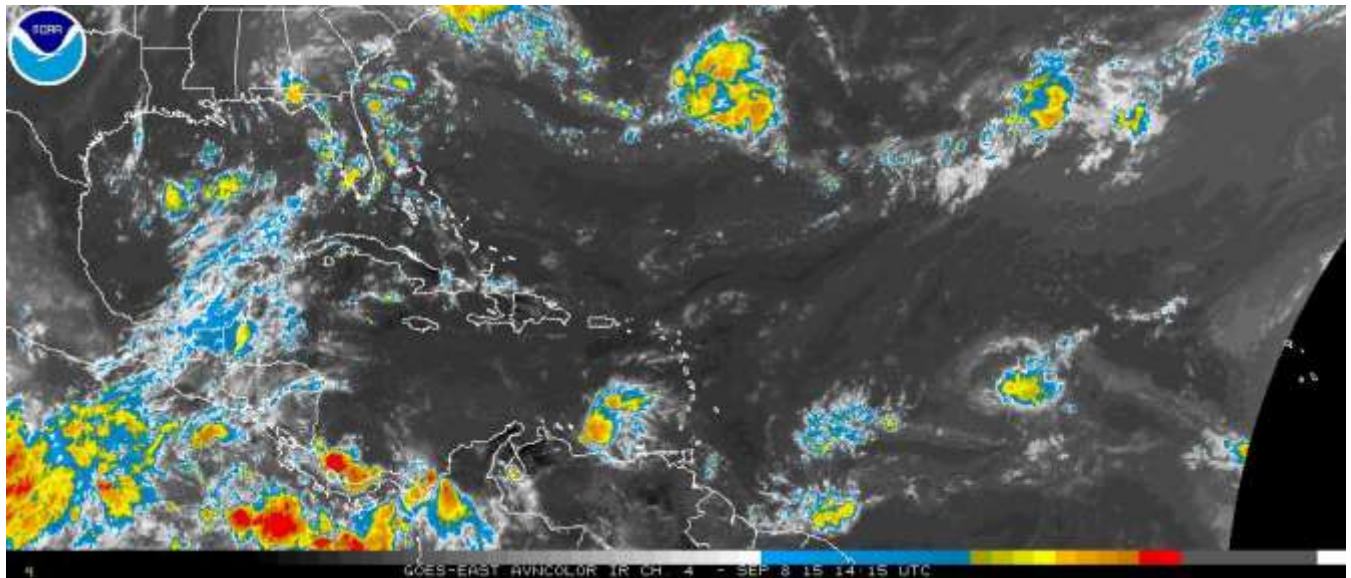


Map 2: 200 mb (53,000ft) wind flow pattern showing a weak upper level trough in the Bay of Campeche and southern Mexico, drifting eastwards.

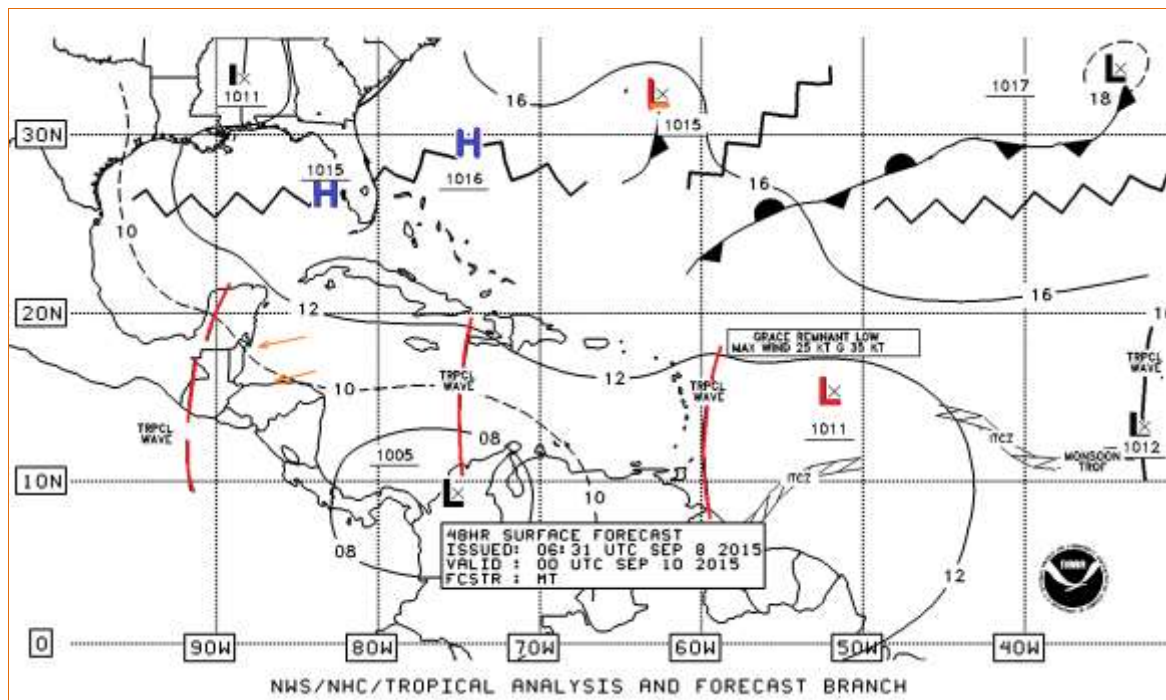
This Weekend Through Next Week.

Expect increasing showers over all districts on Saturday through Tuesday of next week. Rainfall rates will be in the range of 0.75 – 1.00 inch, especially in southern coastal region and the hills of central Belize. A low pressure system developing over Belize and the NW Caribbean early next week will keep atmospheric conditions unstable and favorable for showers during most of the week.

Note: The intense El Nino Southern Oscillation (ENSO) in the Eastern Pacific continued to suppress seasonal convective activity over Central America and Belize during the past six to eight weeks. Required moisture for the Vegetative and Flowering phases of this year's main corn crop was insufficient or unavailable; hence yields will very likely be below normal for most farmers, especially those who planted late. As was indicated before the onset of this year's rainy season, I predicted high variability in rainfall during this ENSO year. This 2015 ENSO event is turning out to be one of the most intense warm phases of ENSO, with record-setting surface temperature. Its effect will persist through the rest of 2015 and the first quarter of 2016.



Map 3: NHC 48-hr. Forecast Surface chart (Valid: 6:00 pm 9 Sep.) showing a tropical wave west of Belize and a second TW approaching Jamaica. A third TW will be entering the eastern Caribbean at this time. A low pressure area can be observed several hundred miles east of the Lesser Antilles.



End...