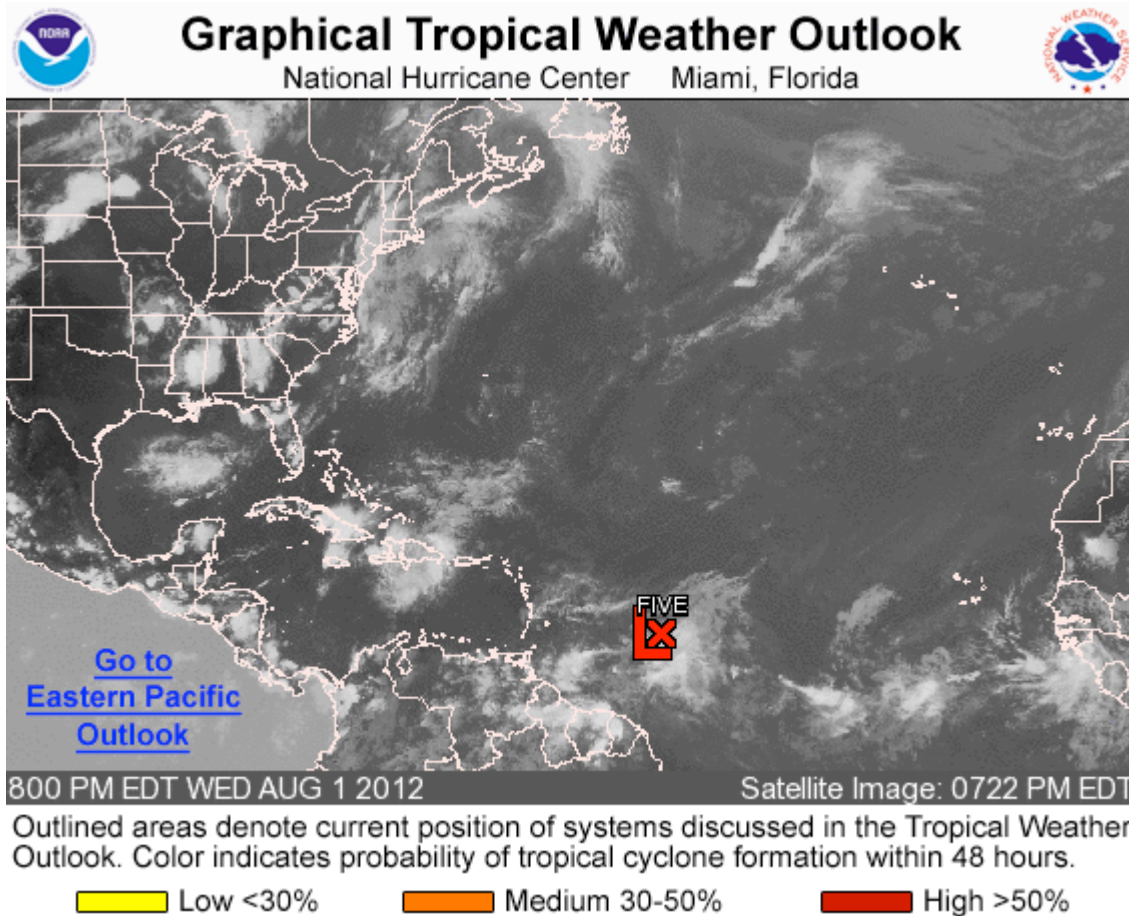


WEEKLY WEATHER OUTLOOK

Mid Week Update
Belize Central America
Wednesday, August 1, 2012

Tropical Depression # 5



WTNT35 KNHC 012354
TCPAT5

BULLETIN
TROPICAL DEPRESSION FIVE INTERMEDIATE ADVISORY NUMBER 1A
NWS NATIONAL HURRICANE CENTER MIAMI FL AL052012
800 PM AST WED AUG 01 2012, **6:00 pm Local Time Belize**

...DEPRESSION CONTINUES TO MOVE TOWARD THE WINDWARD ISLANDS...

SUMMARY OF 800 PM AST...0000 UTC...INFORMATION

LOCATION...12.4N 49.8W
ABOUT 760 MI...1220 KM E OF THE WINDWARD ISLANDS
MAXIMUM SUSTAINED WINDS...35 MPH...55 KM/H
PRESENT MOVEMENT...WNW OR 285 DEGREES AT 18 MPH...30 KM/H
MINIMUM CENTRAL PRESSURE...1008 MB...29.77 INCHES

WATCHES AND WARNINGS

CHANGES WITH THIS ADVISORY...

NONE.

SUMMARY OF WATCHES AND WARNINGS IN EFFECT...

A TROPICAL STORM WATCH IS IN EFFECT FOR...
* BARBADOS...ST. VINCENT AND THE GRENADINES...AND DOMINICA
* ST. LUCIA
* MARTINIQUE AND GUADELOUPE

INTERESTS ELSEWHERE IN THE LESSER ANTILLES SHOULD MONITOR THE
PROGRESS OF THIS SYSTEM.

A TROPICAL STORM WATCH MEANS THAT TROPICAL STORM CONDITIONS ARE
POSSIBLE WITHIN THE WATCH AREA...GENERALLY WITHIN 48 HOURS.

FOR STORM INFORMATION SPECIFIC TO YOUR AREA...PLEASE MONITOR
PRODUCTS ISSUED BY YOUR NATIONAL METEOROLOGICAL SERVICE.

DISCUSSION AND 48-HOUR OUTLOOK

AT 800 PM AST...0000 UTC...THE CENTER OF TROPICAL DEPRESSION FIVE
WAS LOCATED NEAR LATITUDE 12.4 NORTH...LONGITUDE 49.8 WEST. THE
DEPRESSION IS MOVING TOWARD THE WEST-NORTHWEST NEAR 18 MPH...30
KM/H...AND A WEST-NORTHWESTWARD TO WESTWARD MOTION AT ABOUT THE SAME
FORWARD SPEED IS EXPECTED OVER THE NEXT 48 HOURS. ON THE FORECAST
TRACK...THE CENTER OF THE TROPICAL CYCLONE SHOULD BE NEAR THE
WINDWARD ISLANDS ON FRIDAY.

MAXIMUM SUSTAINED WINDS ARE NEAR 35 MPH...55 KM/H...WITH HIGHER
GUSTS. SOME STRENGTHENING IS FORECAST DURING THE NEXT 48 HOURS...
AND THE DEPRESSION COULD BECOME A TROPICAL STORM TONIGHT OR ON
THURSDAY.

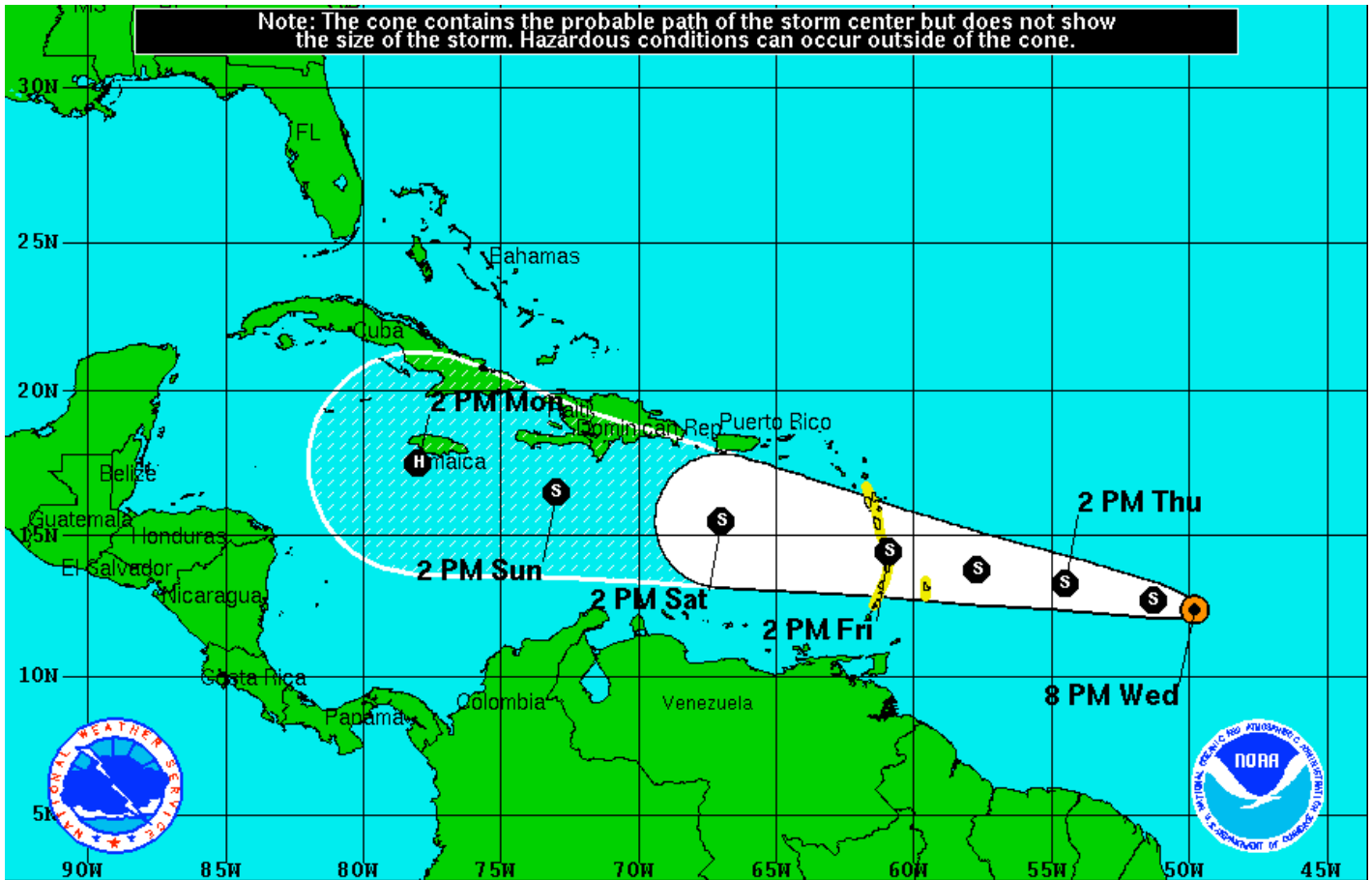
ESTIMATED MINIMUM CENTRAL PRESSURE IS 1008 MB...29.77 INCHES.

HAZARDS AFFECTING LAND

WIND...TROPICAL STORM CONDITIONS ARE POSSIBLE WITHIN THE WATCH AREA
ON FRIDAY.

NEXT ADVISORY

NEXT COMPLETE ADVISORY...1100 PM AST.



Note: The cone contains the probable path of the storm center but does not show the size of the storm. Hazardous conditions can occur outside of the cone.

<p>Tropical Depression Five <i>Wednesday August 1, 2012</i> 8 PM EDT Intermediate Advisory 1A NWS National Hurricane Center</p>	<p>Current Information: ● Center Location 12.4 N 49.8 W Max Sustained Wind 35 mph Movement WNW at 18 mph</p>	<p>Forecast Positions: ● Tropical Cyclone ○ Post-Tropical Sustained Winds: D < 39 mph S 39-73 mph H 74-110 mph M > 110mph</p>
<p>Potential Track Area: ☐ Day 1-3 ☐ Day 4-5</p>	<p>Watches: ☐ Hurricane ☐ Trop.Storm</p>	<p>Warnings: ☐ Hurricane ☐ Trop.Storm</p>

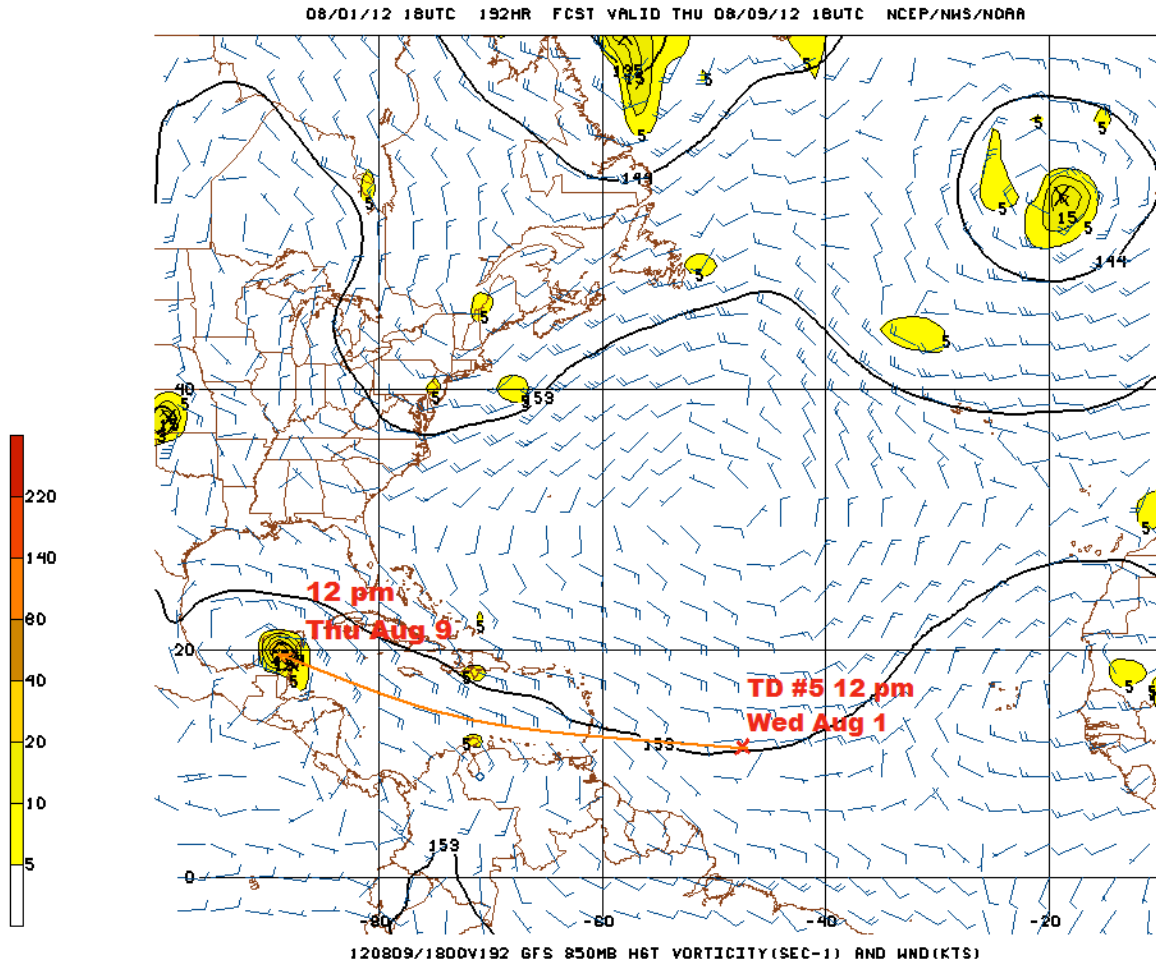


Figure 2 GFS model vorticity projection at 850 mb (5,000ft) showing the seven day projection of TD #5, which has the potential to become a tropical cyclone as it moves into the eastern and central Caribbean over the weekend and early next week.

Atmospheric conditions will become favourable for strengthening of TD # 5 as it approaches the Windward Islands and enter the eastern Caribbean. The NHC forecast track moves the system WNW to just south of Jamaica by next Monday afternoon as a hurricane; while the GFS model 850 mb level vorticity projection (Figure 2) has the vorticity maximum center or Low slowing down and moving towards the southern or central Yucatan coast by 12:00pm on Thursday, August 9, 2012.

All interests in the eastern, central and western Caribbean should continue to monitor the progress of TD # 5 as it moves generally WNW during the next 24-48 hours.

BE PREPARED !