

## **WEEKEND WEATHER OUTLOOK**

### **Belize, Central America**

**Valid: Friday-Monday, Feb. 3 - 6, 2012**

**Issued: 3:00 pm, Friday, February 3, 2012**

### **SYNOPSIS:**

**A high pressure system over the East-central coast of the USA will drift into the western Atlantic this weekend, but will maintain a tight pressure gradient over the region to the south. This pattern will continue to generate a wind surge in the central Caribbean over the next 48-72 hours. This feature, coupled with a divergent upper level SW'ly airflow across Central America ahead of a Pacific Trough in the upper atmosphere, will keep conditions moist and unstable over Belize and the NW Caribbean for the next three days.**

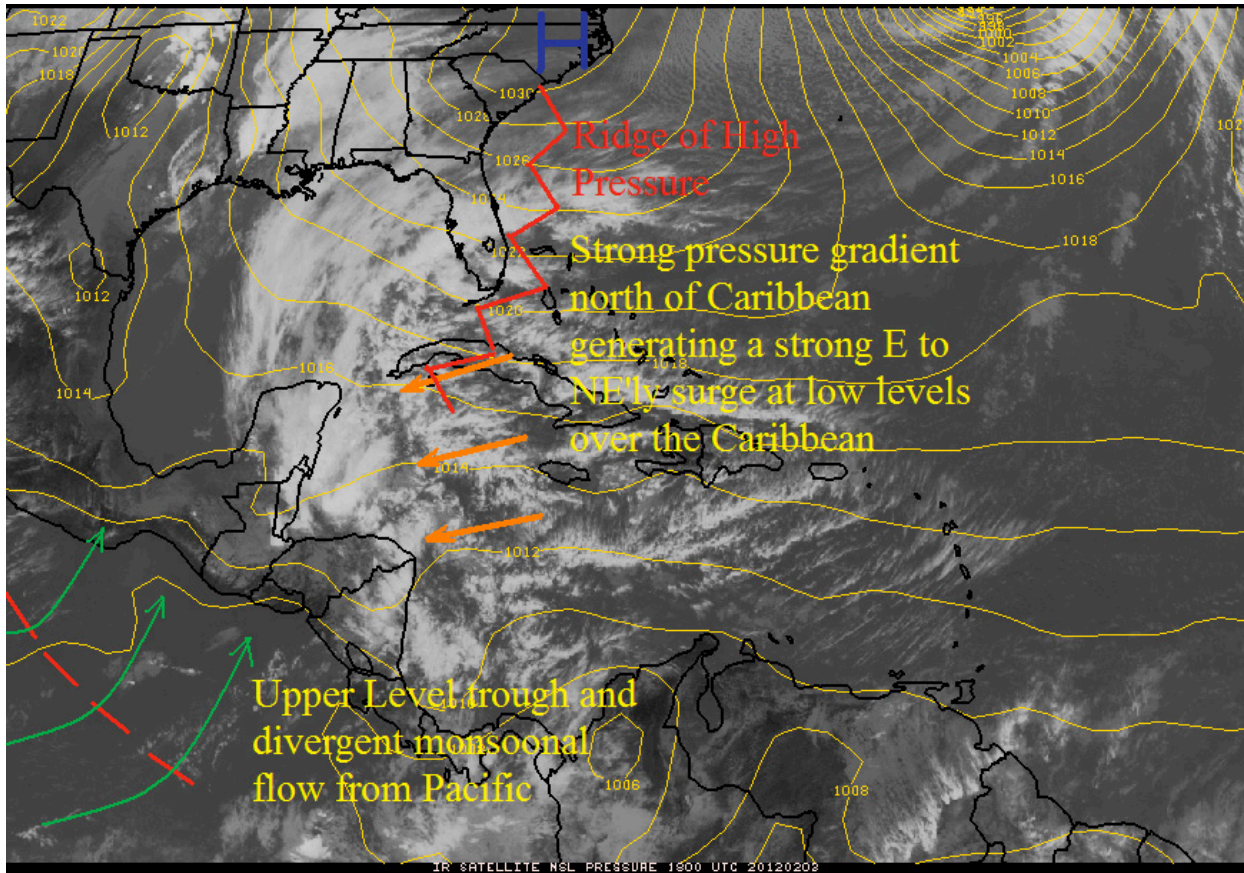
**A cold front will drift southward across the Gulf of Mexico this weekend, but will become quasi-stationary over the south-central Gulf by Sunday morning. Meanwhile, a trough of low pressure will form in the NW and SW Caribbean by Sunday, and will enhance the showery weather over the region. The GFS Model is forecasting most of the associated strong convection to be concentrated offshore the coast of Belize.**

**We can expect the weather to remain cloudy, mild and showery this weekend. The heavier showers will be concentrated over the coastal plain and the NE slopes of the elevated terrain of the Cayo, Stann Creek and Toledo districts.**

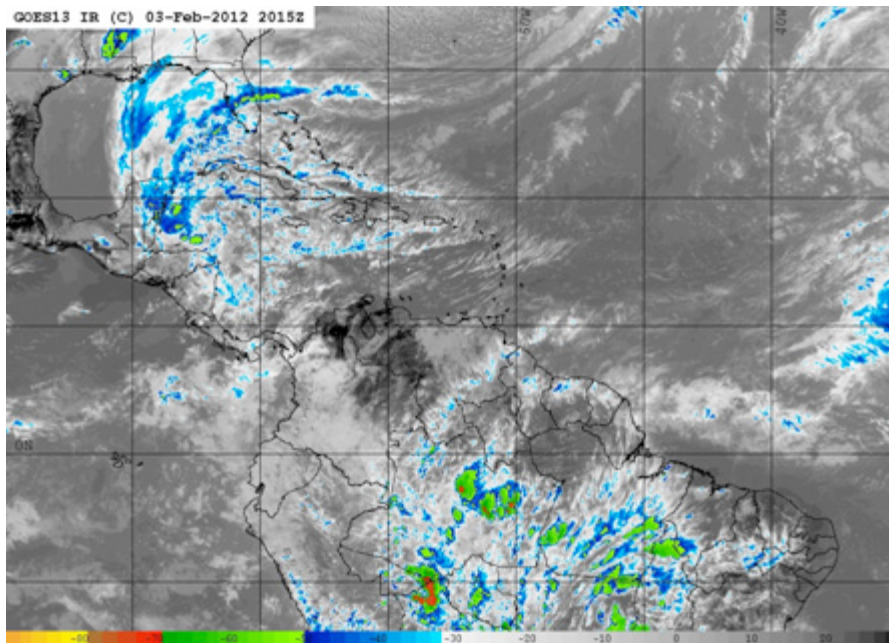
Daily rainfall totals will range from 0.50-1.25 inches in on Friday, increasing Saturday, Sunday and Monday, with daily accumulations ranging from 0.50-1.25 inches, especially along coastal areas and the NE slopes of the central plateau.

---

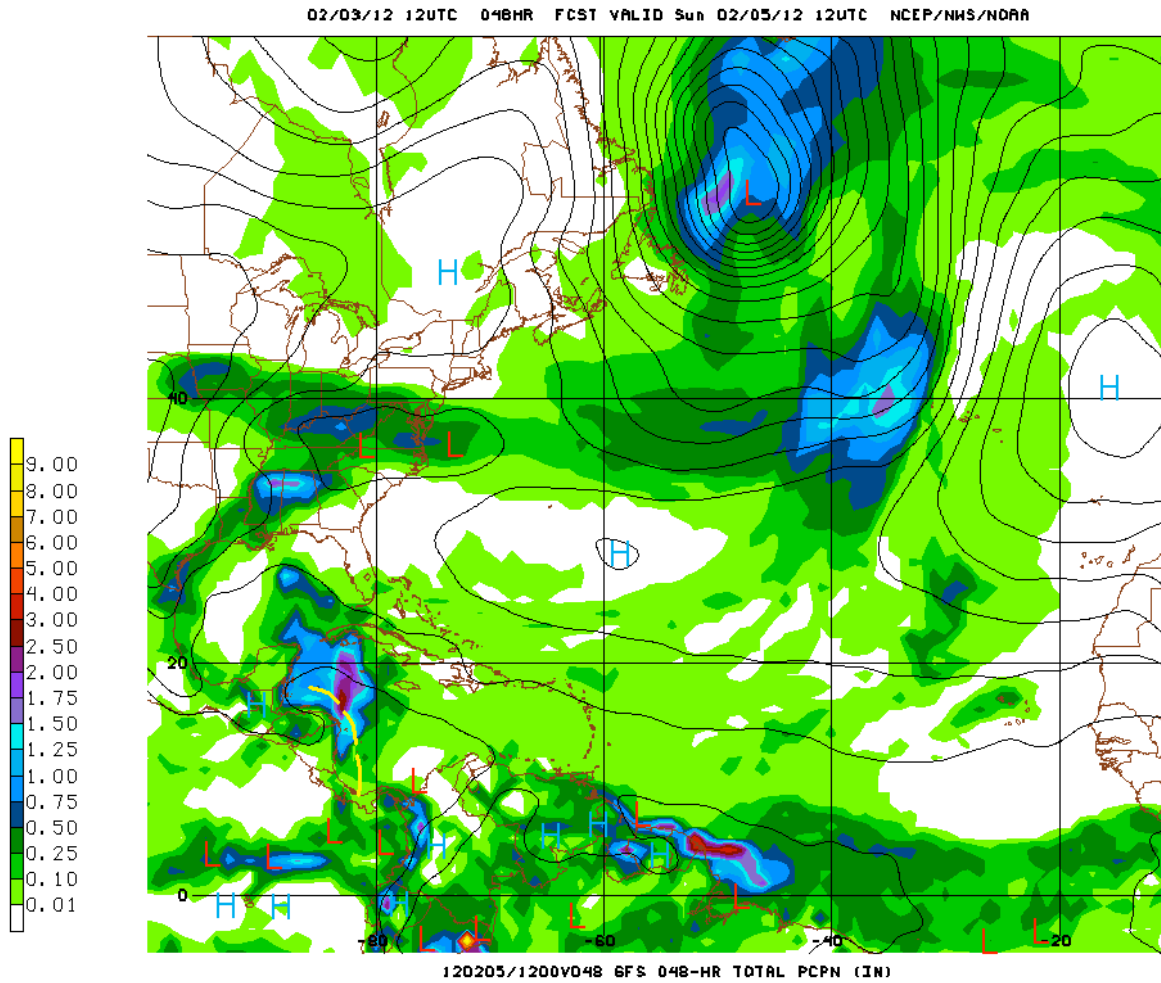
Additional runoff over already saturated soil may lead to flash floods over hilly and valley areas this weekend.



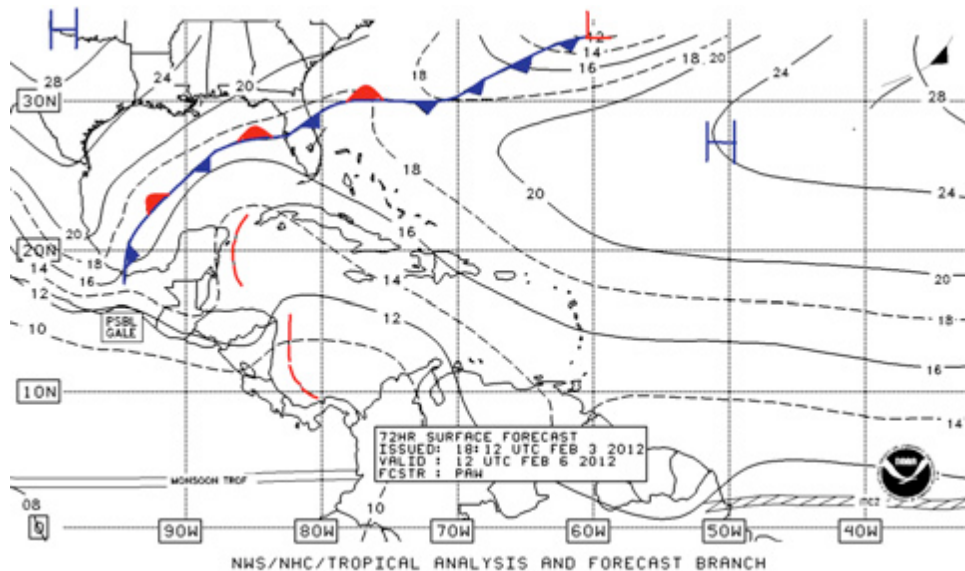
**Fig.1** NWS surface map valid for 12:00 pm, Feb. 3, 2012, superimposed on the 1:00 pm Visible Satellite image, widespread deep rainclouds over and offshore northern Belize.



**Fig. 2** GOES IR satellite image valid for 2:15 pm , Friday, Feb. 3, 2012 showing scattered rain clouds over the NW Caribbean, over and offshore northern Belize.

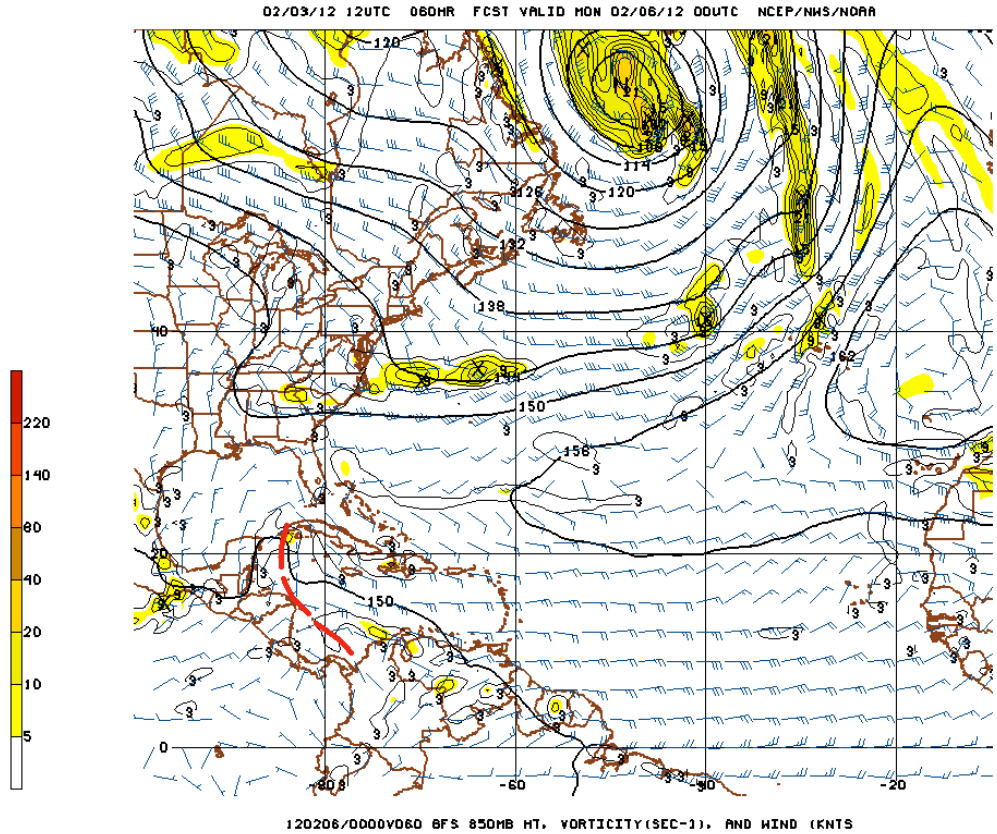


**Fig. 3 GFS Model 48-hour rainfall projection valid for 6:00 am Sunday, Feb. 5, 2012 showing previous 24-hour rainfall accumulation of 0.75-1.25 inch over and offshore the coast of Belize. The heaviest rainfall accumulations are expected over the sea around Grand Cayman.**



**Fig. 4 NHC 72-hour forecast surface map valid for 6:00 am Monday, Feb. 6, 2012, showing quasi-stationary front over the south-central Gulf of Mexico. Surface trough forecast over the NW & SW Caribbean**





**Fig. 5** GFS 60-Hour 850 mb level vorticity projection valid for 6:00 pm, Sunday, Feb. 5, 2012, showing sharp surface trough in the NW Caribbean.

## Belize Five-day Outlook for Agriculture and Industry...

Friday	Saturday	Sunday	Monday	Tuesday
Feb. 3, 2012	Feb. 4, 2012	Feb. 5, 2012	Feb. 6, 2012	Feb. 7, 2012
Cloudy with sunny spells & mild. Few showers over most districts, some heavy at times	Mostly cloudy & mild with outbreaks of showers over most districts. Heavier concentration along coast	Cloudy with outbreaks of showers, some heavy at times, especially along coast and hilly terrain	Cloudy with some outbreaks of showers and periods of rain especially over southern districts and southern coastal waters.	Cloudy with sunny spells & mild. Few showers mostly in the South and along the coast
Rainfall: 0.25- 0.50 of-an-inch	Rainfall: 1.00-1.25 inches	Rainfall: 1.25-1.50 inches	Rainfall: 0.50-1.00 inch	Rainfall: 0.25-0.50 of-an-inch

*RFrutos*  
 Meteorologist/Hydrologist  
 Friday, Feb. 3, 2012