

WEEKEND WEATHER OUTLOOK

Belize, Central America

Valid: Friday-Monday, Feb. 10 - 13, 2012

Issued: 3:00 pm, Friday, February 10, 2012

SYNOPSIS:

A high pressure system strengthening across the North-central USA today, will build strongly towards the SE portion of the US, pushing an active cold front through the central and SE Gulf of Mexico during the next 24 hours. This cold front will move into the NW Caribbean and Belize by Saturday evening, producing some outbreaks of showers and thunderstorms over most places.

The cold front will continue into the western Caribbean by late Sunday, then into the SW Caribbean by early Monday. The broad High pressure system will keep a moist and cool North to North-easterly airflow prevailing across Belize this weekend through Monday.

We can expect the weather to become generally cloudy, cool and showery over the weekend, especially over central and northern Belize on Saturday. The showers and rain will then shift to the South and the hills on Sunday and Monday.

Daily rainfall totals will range from 0.10-0.25 of-an-inch on Friday, increasing on Saturday, Sunday and Monday, with daily accumulations ranging from 0.50-1.25 inches, especially over central and northern districts at first, and then shifting over the Stann Creek and Toledo Districts, and offshore waters later on Sunday and on Monday.

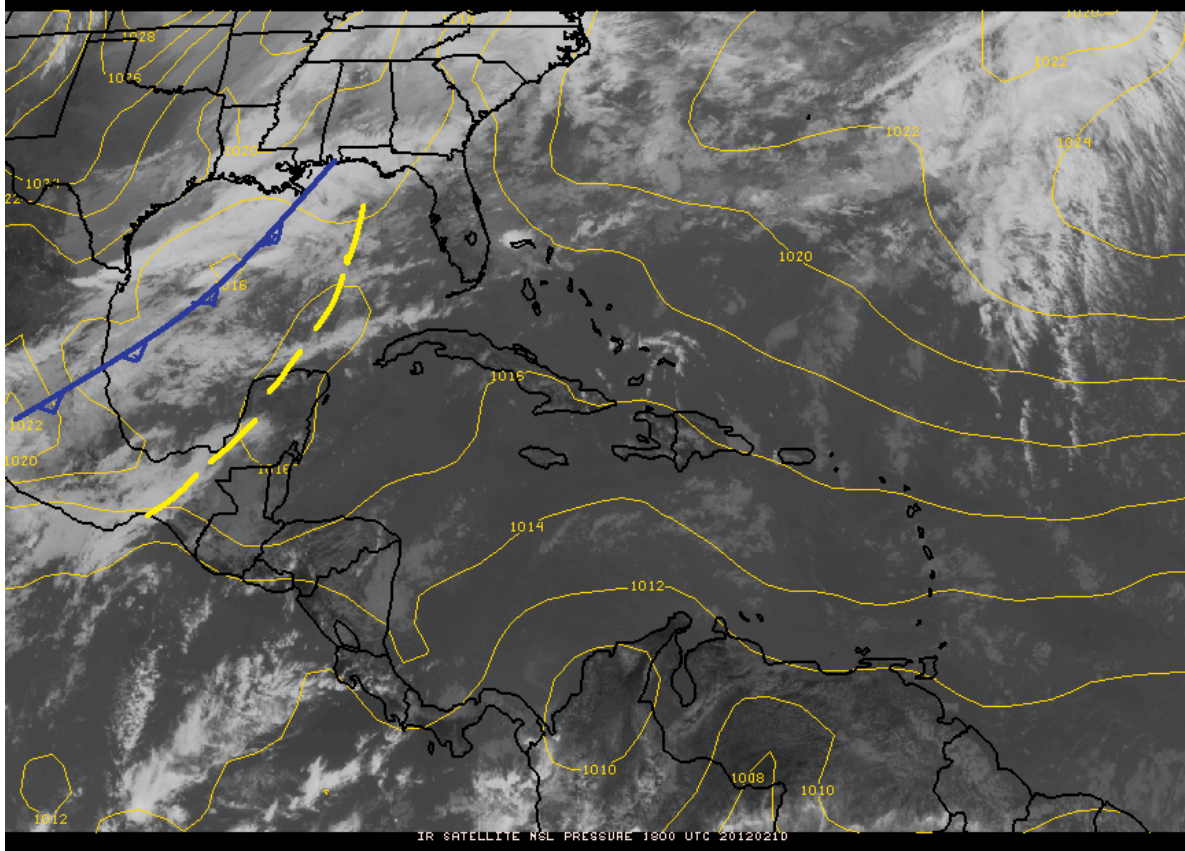


Fig.1 NWS surface map valid for 12:00 pm, Feb. 10, 2012, superimposed on the 1:00 pm Visible Satellite image, showing pre-frontal trough and rainclouds across Western Yucatan

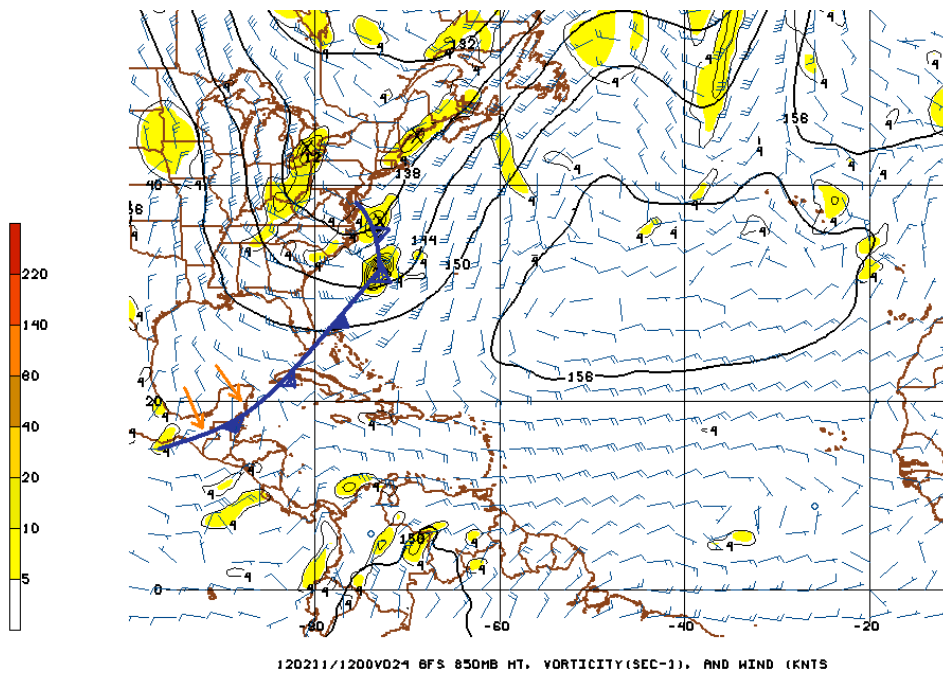


Fig. 2 GFS 24-hour 850mb (5,000ft) level vorticity projection valid for 6:00 am, Saturday, Feb. 11, 2012, showing cold front boundary into the NW Caribbean and across Belize.

120211/1200V024 GFS 850MB HT, VORTICITY(SEC-1), AND WIND (KNTS)

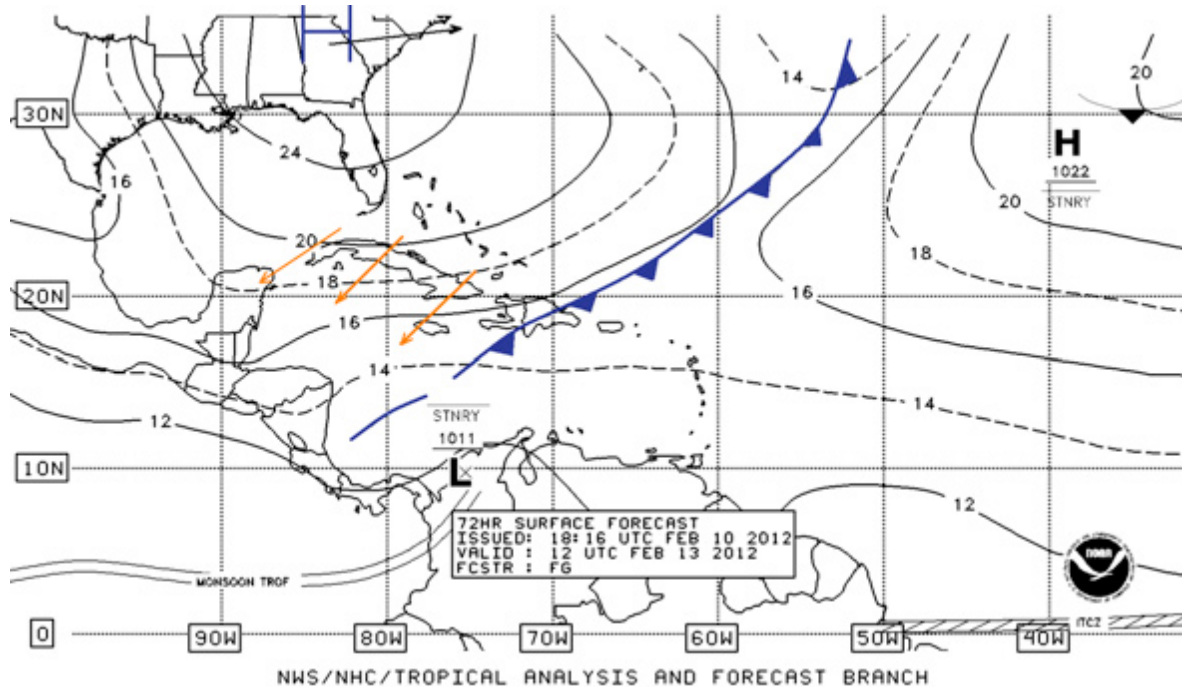


Fig. 3 NHC 72-hour forecast surface map valid for 6:00 am Monday, Feb. 13, 2012, showing moist and unstable NE'ly airflow over Belize, generated by a broad continental High over the SE USA

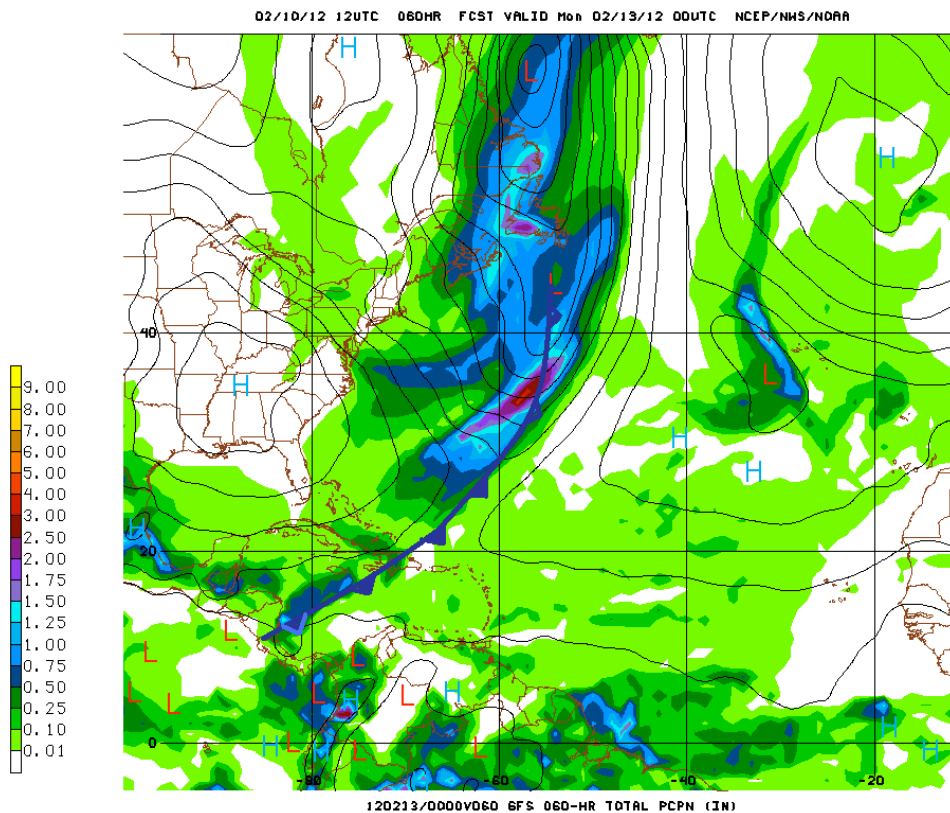







Fig. 4 GFS Model 60-hour rainfall projection valid for 6:00 pm Sunday, Feb. 12, 2012 showing previous 24-hour rainfall totals of 0.50-0.75 of-an-inch over and offshore southern Belize. Major High over SE USA generating cool, moist NNE'ly airflow over area.

Belize Five-day Outlook for Agriculture and Industry...

Friday	Saturday	Sunday	Monday	Tuesday
Feb. 10, 2012	Feb. 11, 2012	Feb. 12, 2012	Feb. 13, 2012	Feb. 14, 2012
				
<p>Cloudy and mild with a few light showers, especially inland in the afternoon.</p> <p>Rainfall: 0.10-0.25 of-an-inch</p>	<p>Mostly cloudy & mild with outbreaks of showers & thunderstorms over central and northern areas at first, then shifting south.</p> <p>Rainfall: 0.50-0.75 of-an- inch</p>	<p>Cloudy & cool with outbreaks of showers, some heavy at times, especially along coast, the hills and southern coastal areas.</p> <p>Rainfall: 1.25-1.50 inches</p>	<p>Cloudy & cool with some outbreaks of showers and periods of rain especially over southern districts and southern coastal waters.</p> <p>Rainfall: 0.50-1.00 inch</p>	<p>Cloudy with sunny spells & mild. Few showers mostly in the South and along the coast</p> <p>Rainfall: 0.25-0.50 of-an-inch</p>

RFrutos
Meteorologist/Hydrologist
Friday, Feb. 10, 2012