

WEEKEND WEATHER OUTLOOK

Belize, Central America

Valid: Friday-Monday, Feb. 17 - 20, 2012

Issued: 3:00 pm, Friday, February 17, 2012

SYNOPSIS:

A cold front will become better organized over the northern Gulf of Mexico during the next 24 hours. A continental high pressure system will intensify behind the cold front and will push the front south-eastward across the Gulf. This front will reach the SE Gulf of Mexico and southern Yucatan by Monday morning. A pre-frontal trough ahead of the cold front will move over Yucatan and into the NW Caribbean by Sunday evening, generating some outbreaks of showers and some thunderstorms over most districts.

The southern portion of the cold front will become diffused over Belize and the NW Caribbean later on Monday, as the continental high pressure system moves offshore the Carolinas, and cause the North and Northeast wind flow over the western Caribbean to swing back to the east by early Tuesday.

The weather will continue fair and mild on Friday and Saturday, with lots of sunshine and little in the form of rainfall. Expect an increase in showers with some thunderstorms on Sunday through Monday, but decreasing on Tuesday

Daily rainfall totals will range from 0.01-0.10 of-an-inch on Friday and Saturday, increasing on Sunday through Monday; with daily accumulations ranging from 0.25-0.50 of-an-inch, especially over central and northern districts at first, and then shifting over southern districts and southern waters on later Monday.

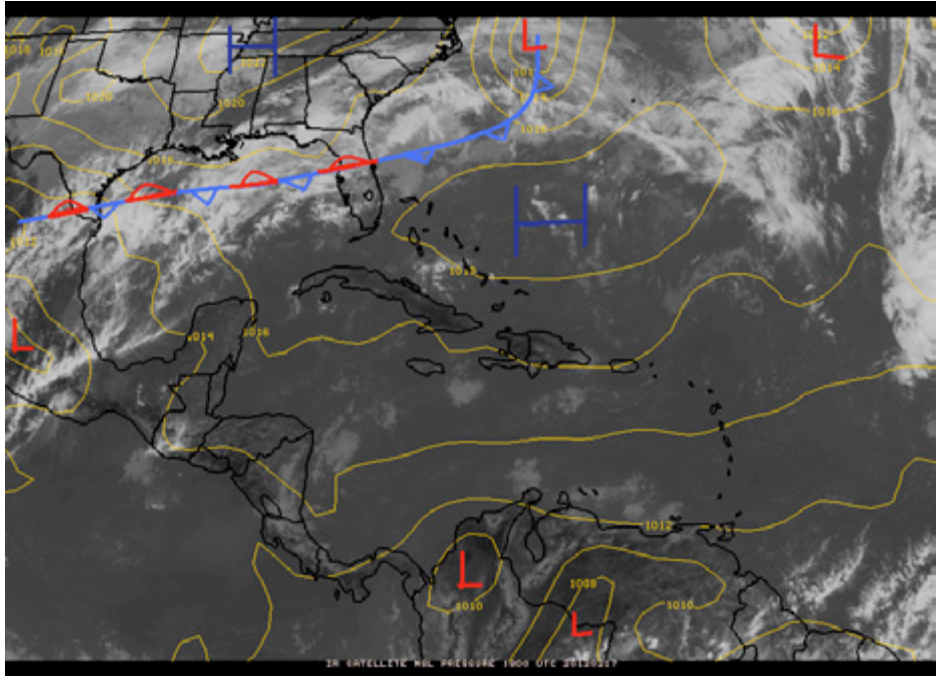


Fig.1 NWS surface map valid for 12:00 pm, Feb. 17, 2012, superimposed on the 12:00 pm Visible Satellite image, showing little in the form of rainclouds over Belize and the NW Caribbean

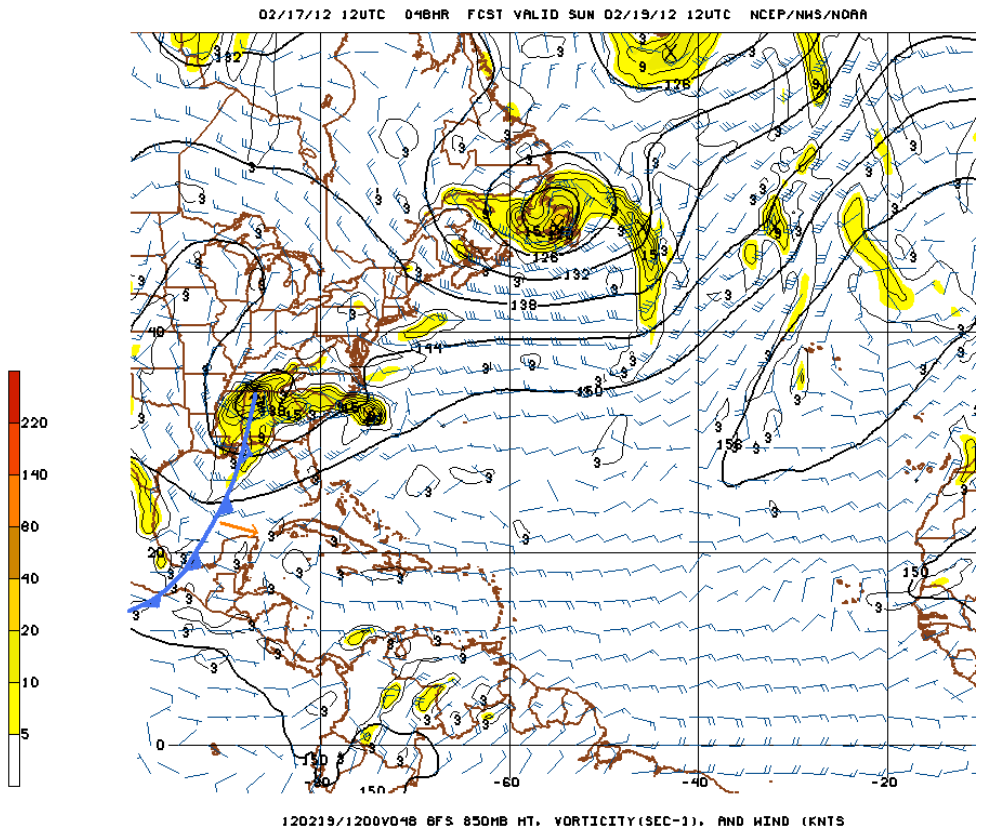


Fig. 2 GFS 48-hour 850mb (5,000ft) level vorticity projection valid for 6:00 am, Sunday, Feb. 19, 2012, showing cold front approaching the Yucatan Peninsula.

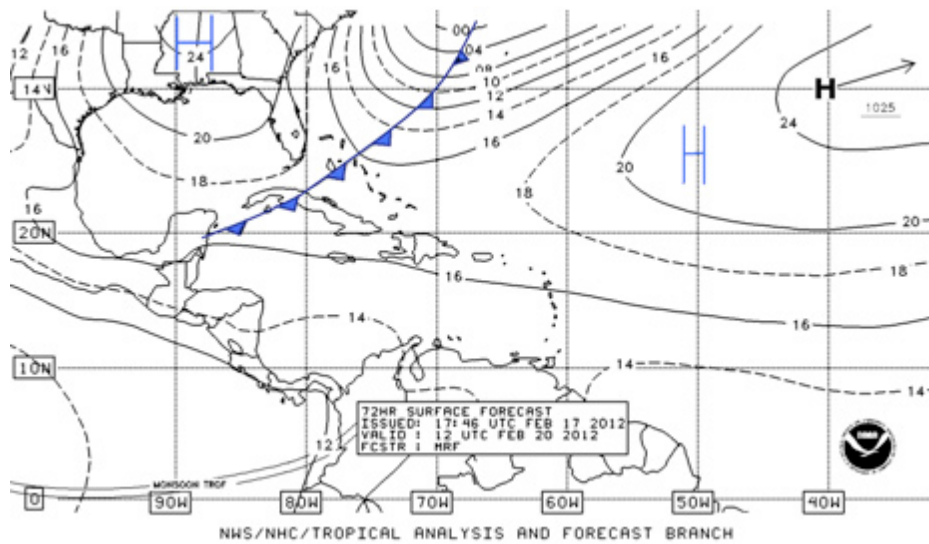


Fig. 3 NHC 72-hour forecast surface map valid for 6:00 am Monday, Feb. 20, 2012, showing cold front in the NW Caribbean and Southern Yucatan. Major High over S-central USA drifting eastward.

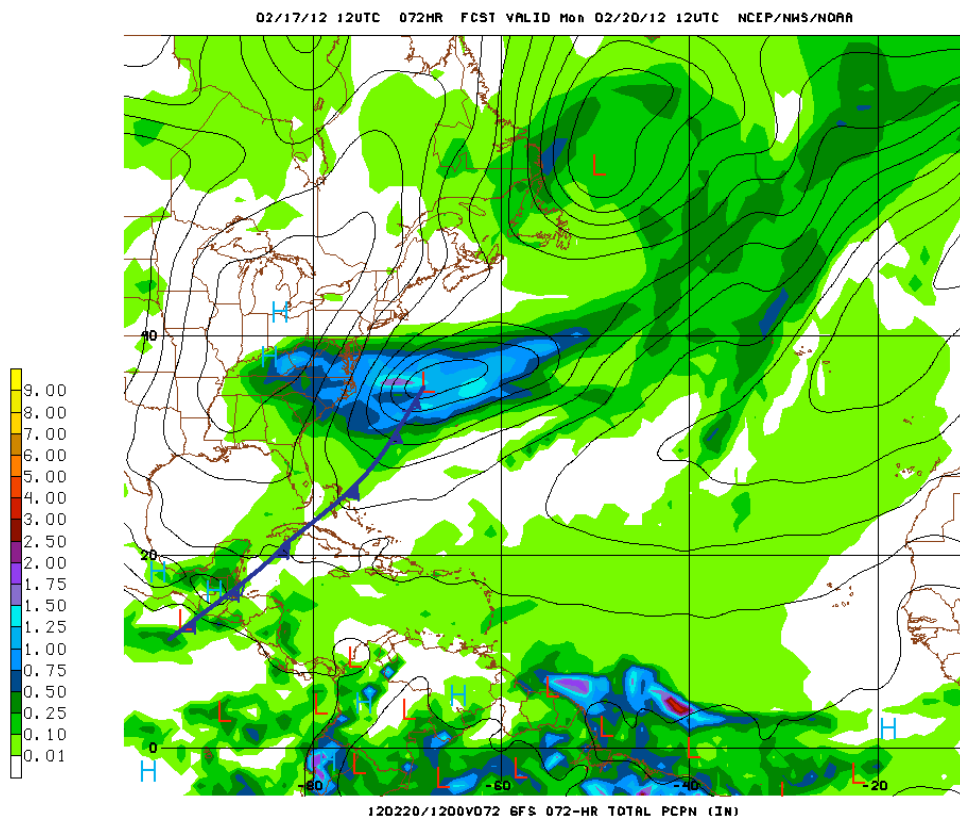







Fig. 4 GFS Model 72-hour rainfall projection valid for 6:00 am Monday, Feb.20, 2012 showing previous 24-hour rainfall totals of 0.25-0.50 of-an-inch over central and southern Belize, as cold front moves slowly across the country.

Belize Five-day Outlook for Agriculture and Industry...

Friday	Saturday	Sunday	Monday	Tuesday
Feb. 17, 2012	Feb. 18, 2012	Feb. 19, 2012	Feb. 20, 2012	Feb. 21, 2012
				
Fair & mild with isolated showers..	Fair & mild with isolated shower.	Cloudy & cool with outbreaks of showers and some thunderstorms.	Cloudy & cool with some outbreaks of showers and thunderstorms, dying off.	Cloudy with sunny spells & cool. Few showers mostly over southern waters and southern districts
Rainfall: 0.01-0.10 of-an-inch	Rainfall: 0.01-0.10 of-an- inch	Rainfall: 0.10-0.25 of-an-inch	Rainfall: 0.25-0.50 of-an-inch	Rainfall: 0.25-0.50 of-an-inch

RFrutos
Meteorologist/Hydrologist
Friday, Feb. 17, 2012