

# **WEEKEND WEATHER OUTLOOK**

## **Belize, Central America**

**Valid: Friday-Monday, March 16 - 19, 2012**

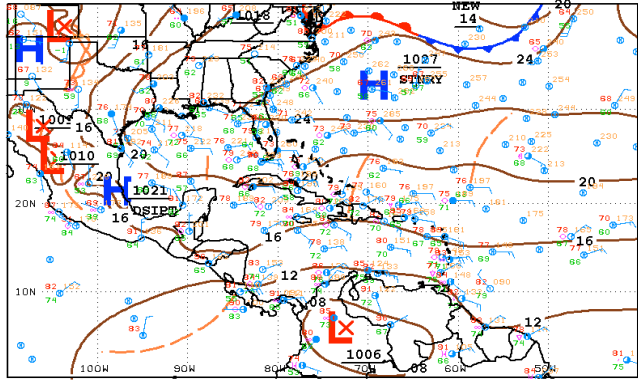
**Issued: 3:00 pm, Friday, March 16, 2012**

## **SYNOPSIS:**

**An easterly to east-northeasterly airflow will prevail over the NW Caribbean on Friday and Saturday under the influence of a persistent ridge of high pressure from the western Atlantic. The high pressure ridge will weaken by Sunday. Lows will develop over the Texas Gulf coast and north-eastern Mexico, favouring a drier south-easterly airflow pattern to develop across the NW Caribbean and Belize during Sunday.**

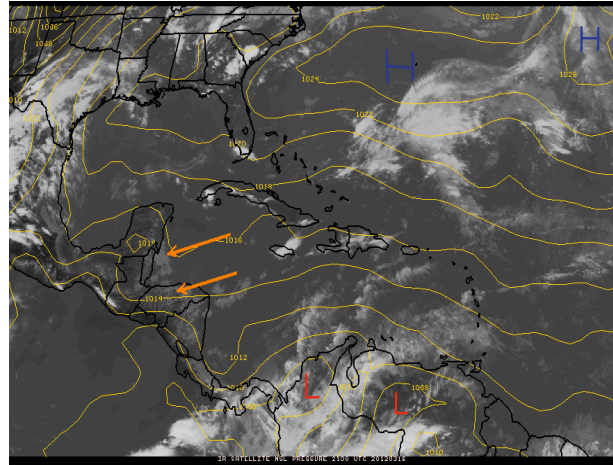
**We can therefore expect fair and sunny weather to persist this weekend with only brief, isolated showers developing mostly along the coast in the morning, and inland during the afternoon hours.**

**Daily rainfall totals will be minimal, ranging from 0.10-0.25 of-an-inch on Friday and Saturday, but diminishing on Sunday and Monday, when daily accumulations will be in the range of 0.01-0.10 of-an-inch. The 2012 Dry Season is here but is being tempered or moderated by brief showers developing in the conditionally unstable ENE'ly airstream across the NW Caribbean region, which has been persisting for the last couple of days. The major heat lows are yet to begin develop over Mexico and across Central America. Let's wait and see how this unfolds!**

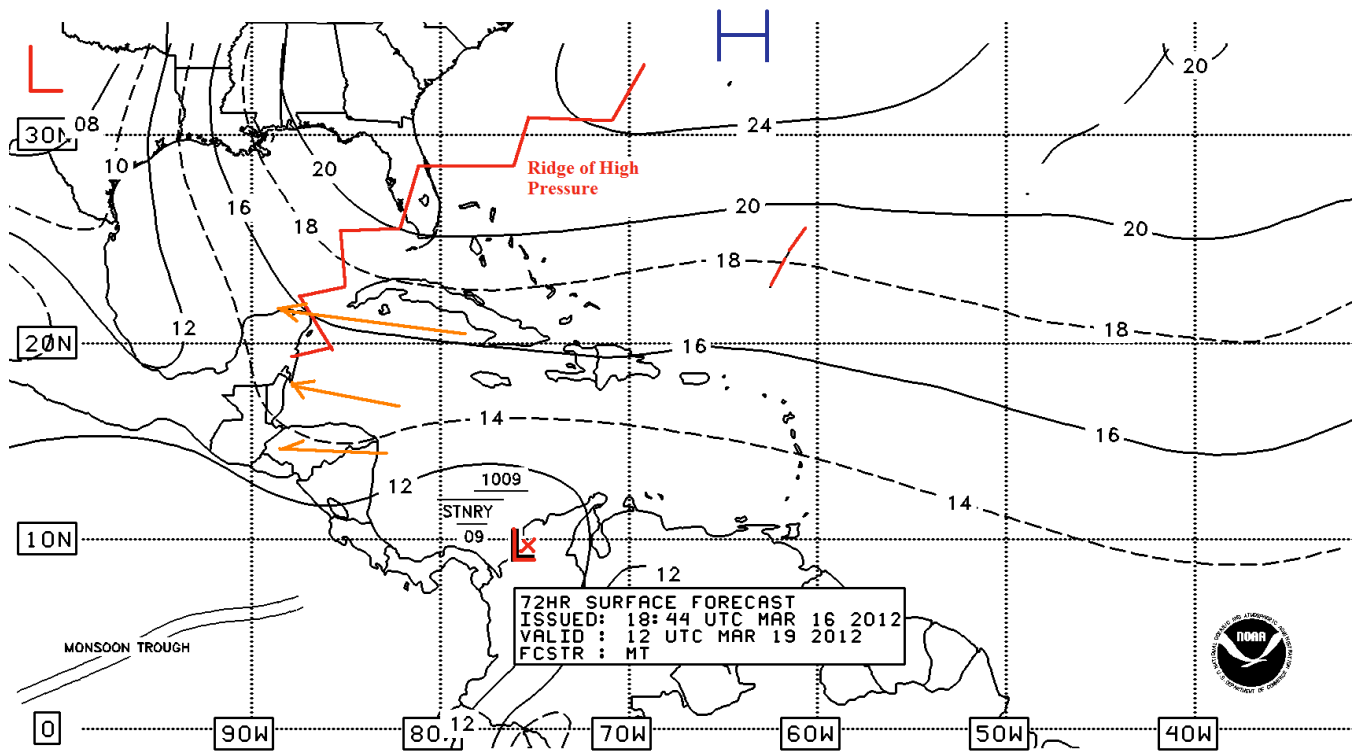


18Z SOUTHWEST NORTH ATLANTIC SFC ANALYSIS  
ISSUED: FRI Mar 16 20:27:32 UTC 2012

NATIONAL HURRICANE CENTER  
MIAMI, FLORIDA  
BY TPA/S ANALYST: HT/MRF  
COLLABORATING CENTERS: NHC DPC HPC



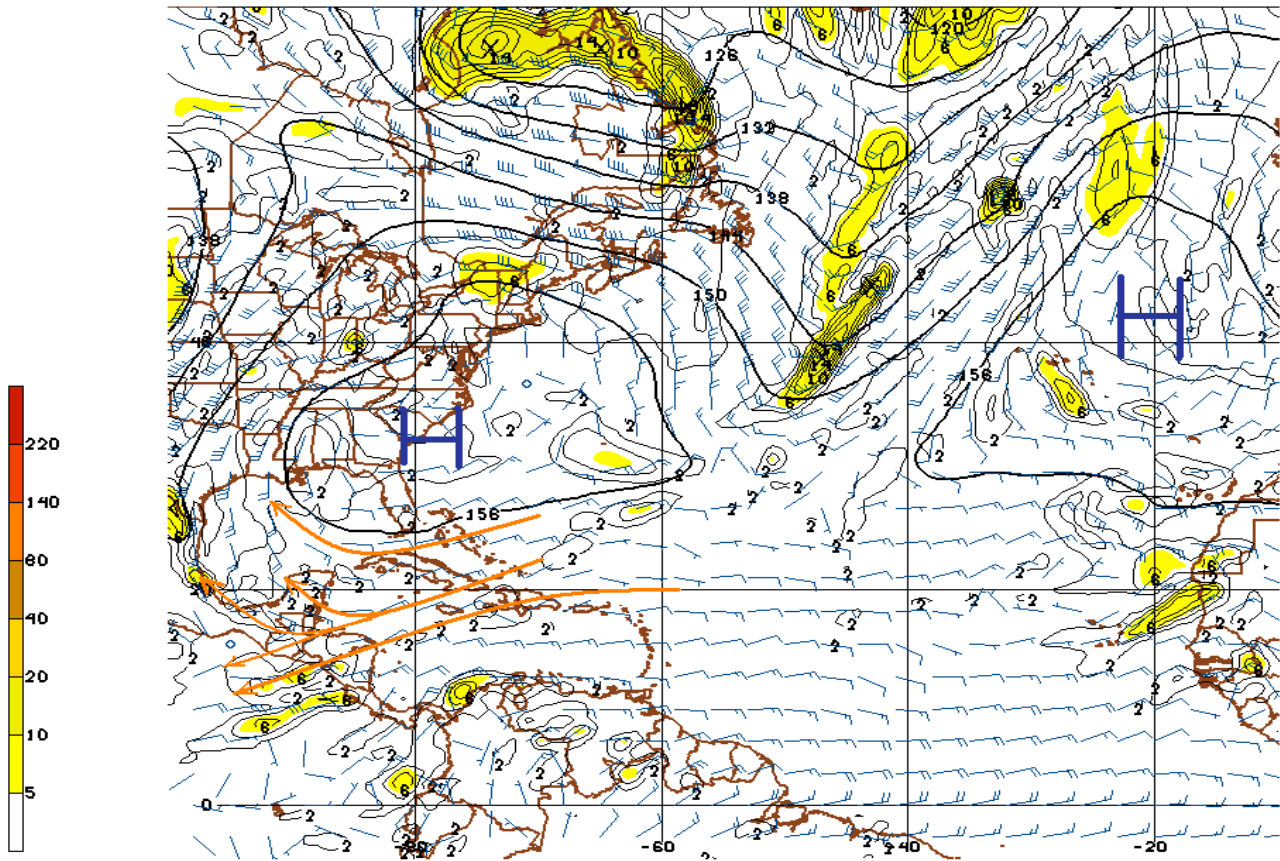
**Fig.1 NWS surface map valid for 12:00 pm, March 16, 2012. Surface map super imposed on the visible satellite image for 12:00 pm, showing shallow rain clouds offshore northern Belize. NE'ly airflow evident over the NW Caribbean.**



NWS/NHC/TROPICAL ANALYSIS AND FORECAST BRANCH

**Fig. 2 NHC 72-hour surface map valid for 6:00 am, Monday, Mar. 19, 2012, showing weakening ridge of high pressure from the Atlantic into the eastern Gulf of Mexico and low pressure trough in the extreme NW Gulf of Mexico. This pattern will favour a seasonal ESE'ly airflow to prevail.**

03/16/12 12UTC 048HR FCST VALID SUN 03/18/12 12UTC NCEP/NMS/NOAA



120318/1200V048 BFS 850MB HT. VORTICITY(SEC-1), AND WIND (KNTS)

Fig. 3 GFS 48-hour 850 mb (5,000ft level) vorticity projection valid for 6:00 am, Sunday, March 18, 2012, showing broad high just offshore the SE seaboard of the USA, generating an ENE'ly airflow over the NW Caribbean.

### General Five-day Outlook for the country of Belize...

Friday Mar. 16, 2012	Saturday Mar. 17, 2012	Sunday Mar. 18 2012	Monday Mar. 19, 2012	Tuesday Mar. 20, 2012
Sunny with cloudy spells. Isolated showers	Sunny with cloudy spells. Isolated showers	Mostly sunny with little rainfall	Mostly sunny with little rainfall	Sunny with cloudy intervals. Isolated showers.
Rainfall: 0.10-0.25 of-an-inch	Rainfall: 0.10-0.25 of-an-inch	Rainfall: 0.01-0.10 of-an-inch	Rainfall: 0.10-0.25 of-an-inch	Rainfall: 0.10-0.25 of-an-inch

RFrutos  
 Meteorologist/Hydrologist  
 Friday, Mar.16, 2012