

WEEKEND WEATHER OUTLOOK

Belize, Central America

Valid: Friday-Tuesday, April 13 - 17, 2012

Issued: 3:00 pm, Friday, April 13, 2012

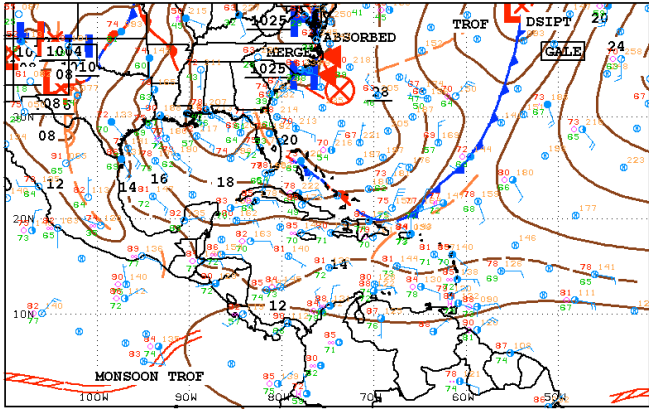
SYNOPSIS:

A broad high pressure system will move into the SW Atlantic this weekend and will keep a stable and seasonally dry South-easterly airflow prevailing across Belize this weekend and on Monday. A convergence zone on the tail end of an old frontal system will drift northward over Central America on Monday and Tuesday, and will likely induce some showers and thunderstorms but mostly over southern Belize on Tuesday.

We can expect the fair and seasonally dry weather to persist this weekend with only brief, isolated showers developing mostly along the coast in the morning, and inland during the afternoon hours. Heavier showers and thunderstorms are likely to increase over the Toledo District and southern coastal waters later on Monday and Tuesday.

Daily rainfall totals will be minimal, ranging 0.01-0.10 of-an-inch across the nation this weekend. In the South however, showers and thunderstorms are likely to increase on Monday afternoon and evening and persisting through Tuesday morning. Daily rainfall totals for this period will be in the range of 0.25-0.50 of-inch in the South.

No threat of flash flood expected this weekend!



19Z SOUTHWEST NORTH ATLANTIC SFC ANALYSIS
ISSUED: FRI APR 13 20:33:28 UTC 2012

NATIONAL HURRICANE CENTER
MIAMI, FLORIDA
BY TAFB ANALYST: FG/CN
COLLABORATING CENTERS: NHC OPC HPC

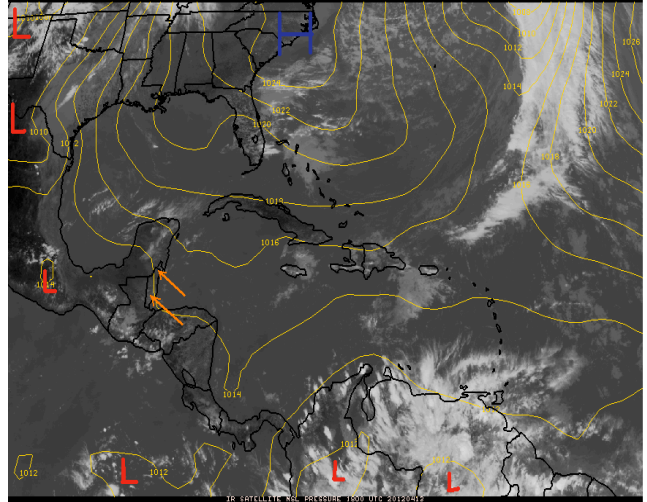
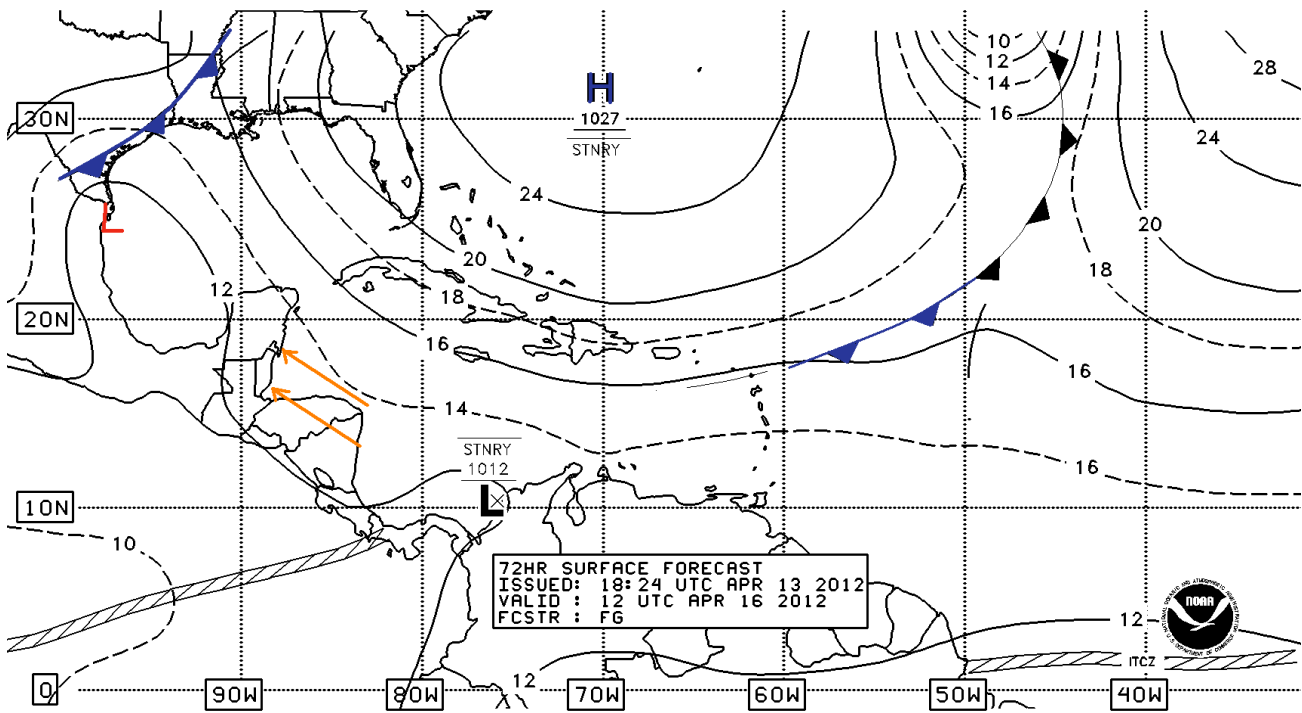


Fig.1 NWS surface map valid for 12:00 pm, April 13, 2012. Surface map super imposed on the visible satellite image for 12:00 pm, showing no significant rainclouds over Belize and the NW Caribbean.



NWS/NHC/TROPICAL ANALYSIS AND FORECAST BRANCH

Fig. 2 NHC 72-hour surface map valid for 6:00 am, Monday, April 16, 2012, showing high pressure in SW Atlantic with high pressure ridge extending south into the northern Caribbean. This system along with a low over the extreme NW Gulf of Mexico near the SE Texas coast, will favour a seasonally dry and stable SE'ly airflow over Belize and the NW Caribbean.

04/13/12 12UTC 096HR FCST VALID Tue 04/17/12 12UTC NCEP/NWS/NOAA

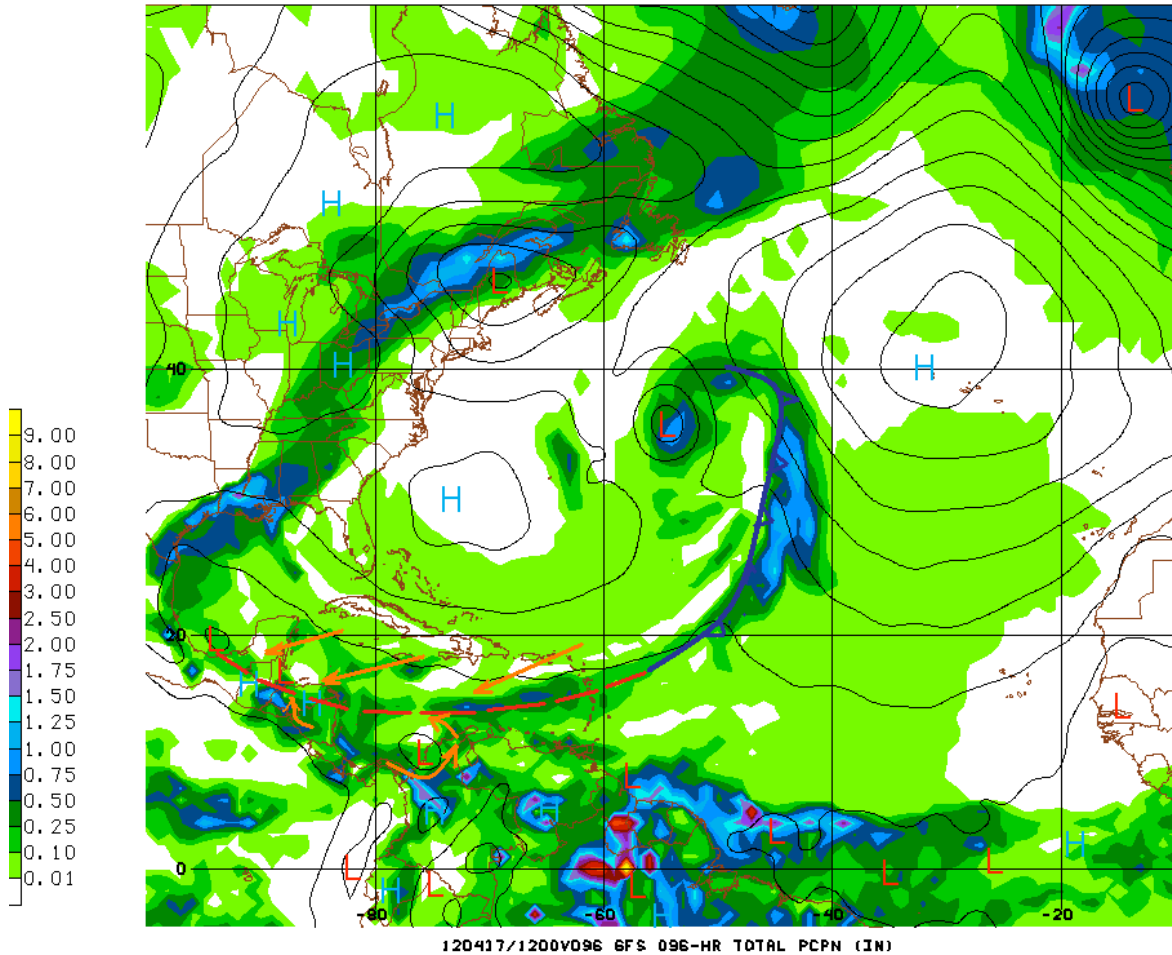



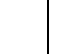



Fig. 3 GFS rainfall projection valid for the 24-hour period prior to 6:00 am, Tuesday, April 17, 2012, showing convergence zone over Central America generating rainfall rates in the range of 0.25-0.50 of-an-inch over southern Belize and southern coastal waters.

Weekend Outlook for the country of Belize...

Friday	Saturday	Sunday	Monday	Tuesday
April 13, 2012	April 14, 2012	April 15, 2012	April 16, 2012	April 17, 2012
				
Mostly sunny with little rainfall	Mostly sunny with little rainfall	Mostly sunny with little rainfall	Mostly sunny with little rainfall	Cloudy intervals. Few showers / TS especially in the South.
Rainfall: 0.01-0.10 of-an-inch	Rainfall: 0.01-0.10 of-an-inch	Rainfall: 0.01-0.10 of-an-inch	Rainfall: 0.10-0.25 of-an-inch	Rainfall: 0.25-0.50 of-an-inch

RFrutos
 Meteorologist/Hydrologist
 Friday, April 13, 2012