

## Weekly Weather Outlook for Belize

Valid Time: Monday, Feb. 13, 2012 until Monday, Feb. 20, 2012

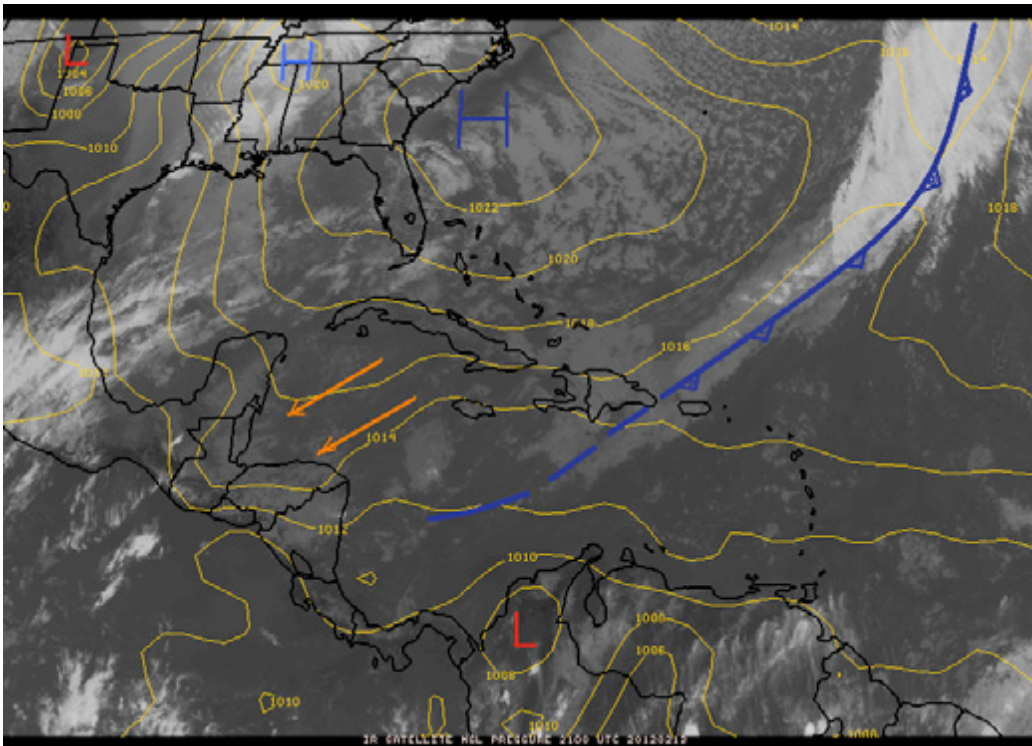
### Feature(s) of Interest:

**A ridge of High Pressure moving slowly ENE over the western Atlantic off the US Central coast, will keep a steady and drier easterly to north-easterly airflow over Belize. This pattern will prevail during most of this working week.**

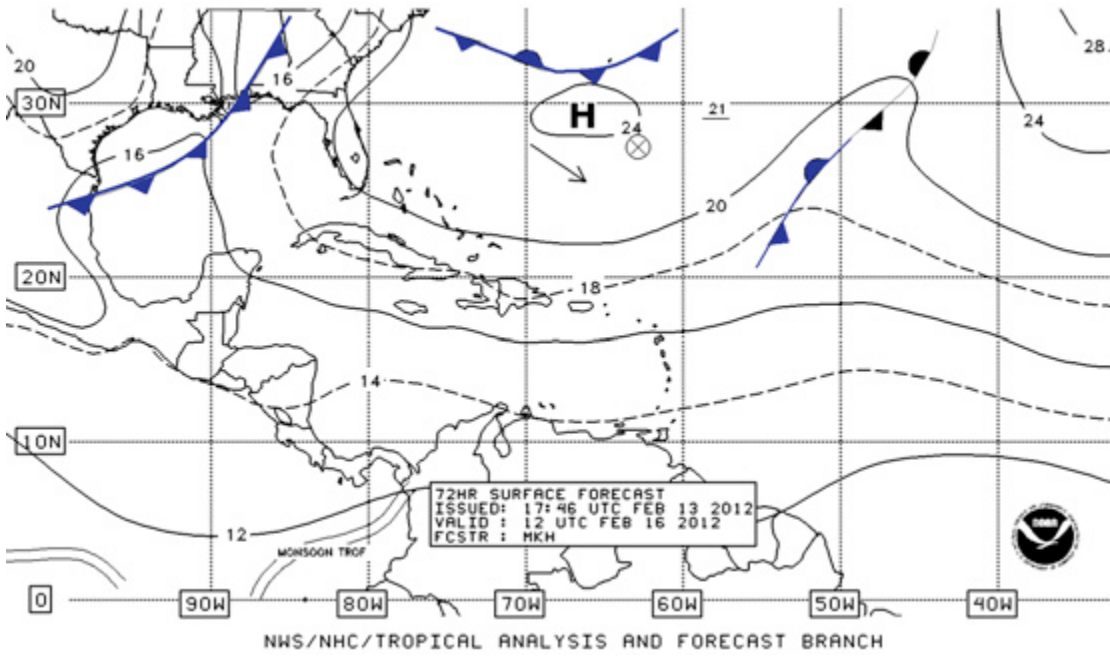
**A cold front will make its way SE across the Gulf of Mexico later this week, reaching the NW Caribbean and Belize by early Monday of next week, as a major continental High Pressure system tracks ESE across the eastern USA.**

We can therefore expect generally mild and sunny weather across Belize during most of this working week. Showers will be isolated over most places from Monday through Saturday of this week. An increase in showers and some thunderstorms is expected on Sunday as a pre-frontal trough moves over Yucatan and Belize ahead of the approaching cold front.

Daily rainfall totals will be minimal, ranging from 0.01-0.10 of-an-inch on Monday through Saturday. Rainfall totals will increase later on Saturday through Monday, with daily totals in the range of 0.25-0.50 of-an-inch over most districts and coastal waters.

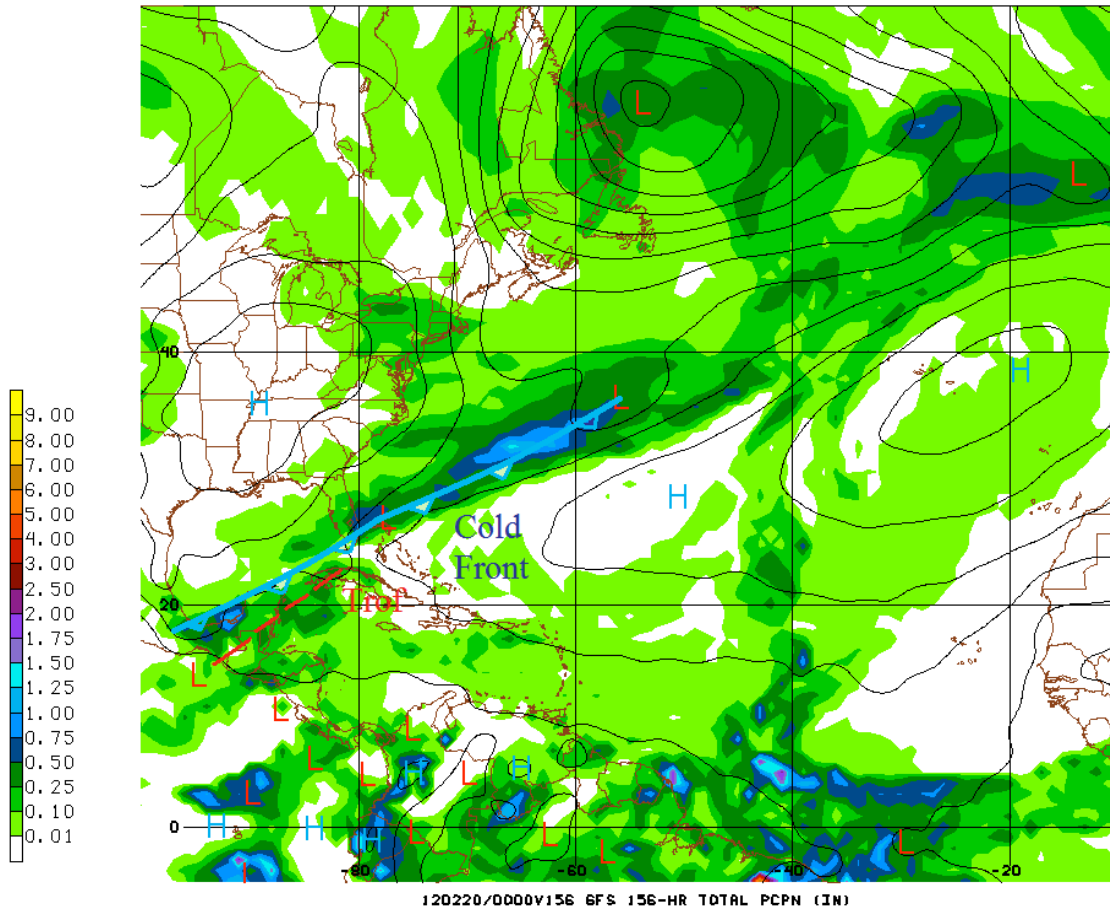


**Fig. 1 GOES Satellite image valid for 3:00 pm, Monday Feb 13, 2012, superimposed on surface isobaric map showing broad high pressure system moving just offshore the Carolinas, generating a steady NE'ly airstream.**










**Fig. 2** NHC 72-hour forecast surface map valid for 6:00 am Thursday, Feb. 16, 2012 showing cold front moving SE across the NW Gulf of Mexico. Weakening ridge over the NW Caribbean, generating stable Easterly airflow over Belize.

02/13/12 12UTC 156HR FCST VALID Mon 02/20/12 00UTC NCEP/NWS/NDAA



**Fig. 3** GFS model, 24 hour rainfall projection, showing accumulations of 0.25-0.50 of-an- inch of rainfall over Belize, as of 6:00 pm, Sunday, Feb. 19, 2012, as cold front approach from the NW and high builds over SE USA.

## Belize Five-day Outlook for Agriculture and Industry...

Mon	Tue	Wed	Thu	Fri	Sat	Sunday
Feb. 13, 2012	Feb. 14, 2012	Feb. 15, 2012	Feb. 16, 2012	Feb. 17, 2012	Feb. 18, 2012	Feb 19, 2012
						
<p>Sunny with cloudy spells. Isolated showers mainly over southern districts and southern coastal waters</p> <p><b>Rainfall: 0.01- 0.10 of-an-inch</b></p>	<p>Mostly sunny with isolated showers.</p> <p><b>Rainfall: 0.01-0.10 of-an-inch</b></p>	<p>Mostly sunny with isolated showers.</p> <p><b>Rainfall: 0.01-0.10 of-an-inch</b></p>	<p>Mostly sunny with isolated showers.</p> <p><b>Rainfall: 0.10-0.25 of-an-inch</b></p>	<p>Mostly sunny with isolated showers.</p> <p><b>Rainfall: 0.10-0.25 of-an-inch</b></p>	<p>Sunny with cloudy spells. Few showers mainly over the central &amp; southern coast.</p> <p><b>Rainfall: 0.25-0.50 of-an-inch</b></p>	<p>Cloudy at times with some showers concentrated mainly over central and northern districts.</p> <p><b>Rainfall: 0.25-0.50 of-an-inch</b></p>

Monday,  
Feb. 13, 2012

*R. Antles, Agrometeorologist/Hydrologist*