

Weekly Weather Outlook for Belize

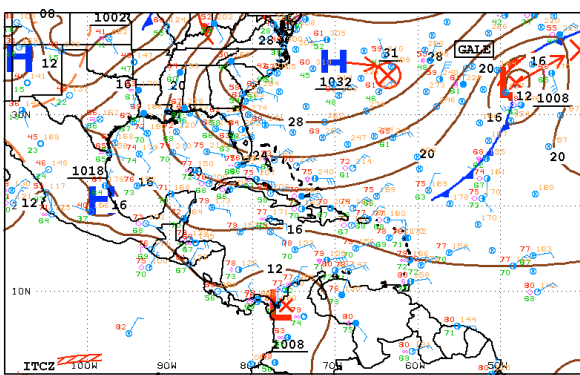
Valid Time: March 12 - 19, 2012

Feature(s) of Interest:

The feature of interest this week will be a relatively stable and fresh Easterly to East-northeasterly airflow over the NW Caribbean, generated by broad west Atlantic High pressure system. This airflow will favour the influx of some moisture, favourable for a few showers here and there. The High Pressure system will weaken as we move into Thursday and Friday of this week, giving way to a seasonally drier and stable SE'ly airflow across Belize and the SW Gulf of Mexico. The fair and dry weather will become much more prevalent and warmer this coming weekend.

We can therefore expect generally breezy, fair and sunny weather through Thursday of this week with some brief daytime showers, especially in the central interior during the afternoon. It will become increasingly warmer and dry as we move into the weekend.

Daily rainfall accumulations during Monday through Thursday of this week will range from 0.10-0.25 of-an-inch, especially over central regions. Daily rainfall totals on Friday through the weekend and Monday next will amount to 0.01-0.10 of-an-inch over the central coast, and minimal elsewhere. In short, the 2012 Dry Season will continue across the nation over the next seven days.



12Z SOUTHWEST NORTH ATLANTIC SFC ANALYSIS
ISSUED: Mon Mar 12 14:44:01 UTC 2012

NATIONAL HURRICANE CENTER
MIAMI, FLORIDA
BY: TAFB ANALYST: MCH
COLLABORATING CENTERS: NHC OPC HPC

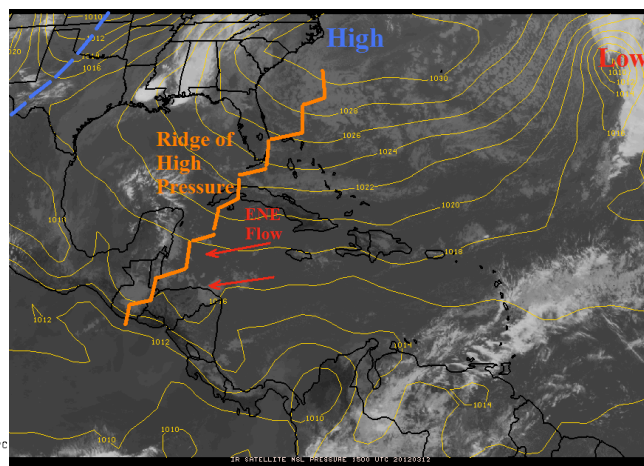


Fig. 1 Surface map and GOES IR Satellite picture valid for 9:00 am, Monday, March 12, 2012, showing ridge of high pressure from the Atlantic into the NW Caribbean, generating a relatively stable ENE'ly airflow over Belize. Shallow rain clouds are evident over the east coast of Yucatan and Belize.

03/12/12 12UTC 048HR FCST VALID Wed 03/14/12 12UTC NCEP/NWS/NOAA

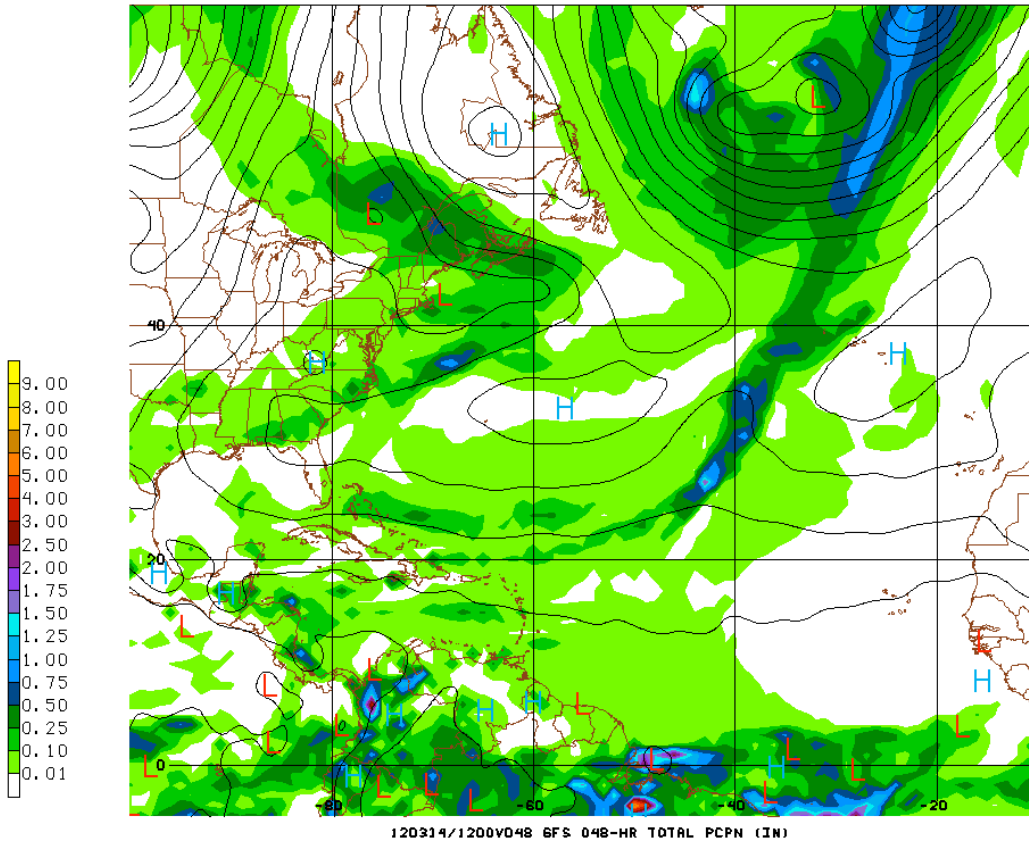


Fig. 2 GFS model 48-hour rainfall projection, showing previous 24-hour rainfall accumulations of 0.25-0.50 of-an- inch of rainfall over central coast Belize, as of 6:00 am, Wednesday, March 14, 2012, as a fresh E'ly airflow prevails across the NW Caribbean and Belize .

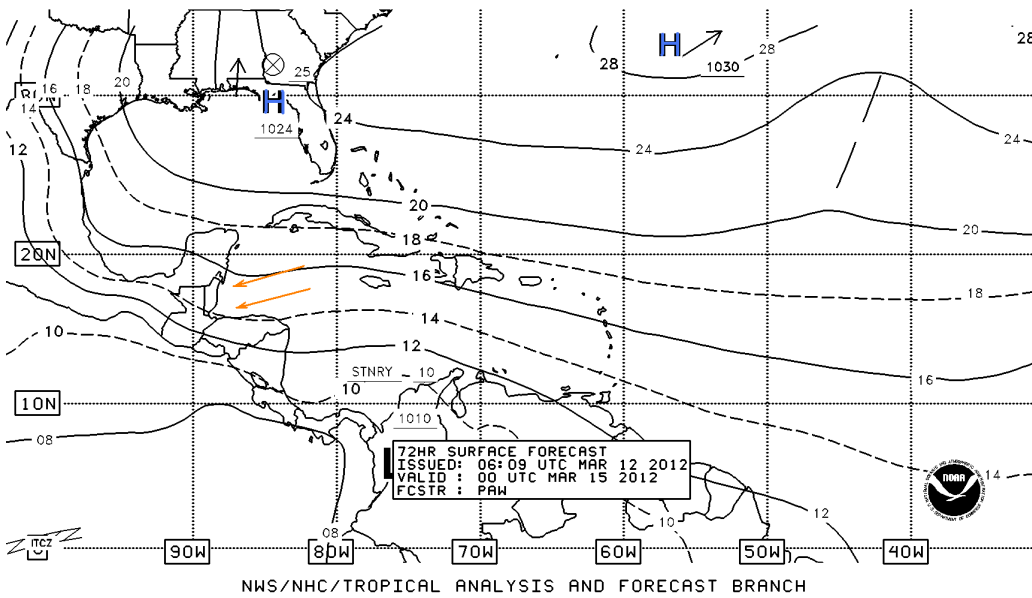


Fig. 3 NHC 72-hour forecast surface map valid for 6:00 pm Wednesday, March 14, 2012 showing broad, west Atlantic High pressure system and a weakening ridge of High pressure extending over the NW Caribbean. This pattern will be generating an ENE'y to E'ly airflow at first, which will veer to the Southeast later on Thursday and Friday.

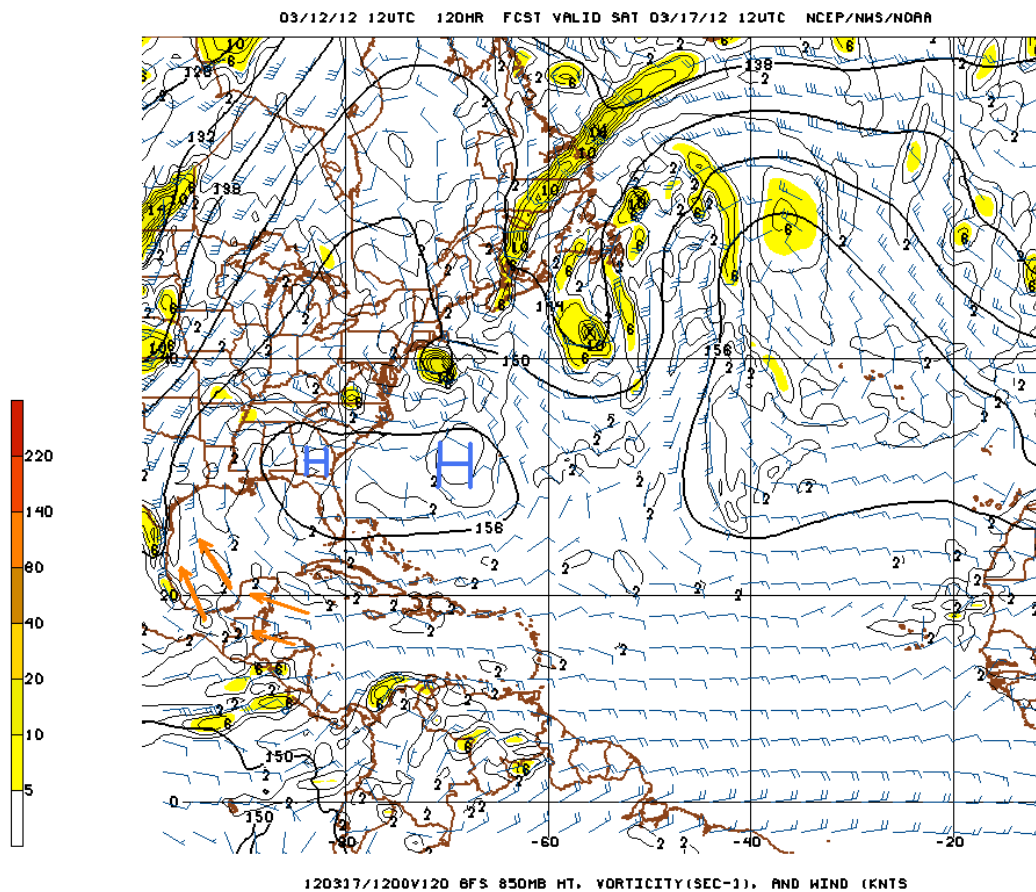


Fig. 4 GFS Model 850 mb (5,000 ft) level 120 hour vorticity projection valid for 6:00 am Saturday, Mar. 17, 2012, showing weakening west Atlantic High generating seasonally dry and stable South-easterly (SE'ly) airstream over Belize and the SW Gulf of Mexico. No major spinning cyclonic vortex (yellow shaded closed lows) are forecast over the NW Caribbean for next Saturday.

Belize Five-day Outlook for Agriculture and Industry...

Mon	Tue	Wed	Thu	Fri	Sat	Sunday
Mar. 12, 2012	Mar. 13, 2012	Mar. 14, 2012	Mar. 15, 2012	Mar. 16, 2012	Mar.17, 2012	Mar. 18, 2012
Sunny with cloudy spells and mild. Few showers mainly over central areas	Sunny with cloudy spells and mild. Few showers mainly over central areas	Sunny with cloudy spells and warmer. Few showers mainly over central coast	Sunny and warm. Isolated showers	Sunny and warm. Isolated showers	Sunny and warm. Isolated showers	Sunny and warm. Isolated showers
Rainfall: 0.10-0.25 of-an-inch	Rainfall: 0.10-0.25 of-an-inch	Rainfall: 0.10-0.25 of-an-inch	Rainfall: 0.01-0.10 of-an-inch	Rainfall: 0.10-0.25 of-an-inch	Rainfall: 0.10-0.25 of-an-inch	Rainfall: 0.10-0.25 of-an-inch mostly central coast

Monday
Mar. 12, 2012

R. Frutes, Agrometeorologist/Hydrologist