

Weekly Weather Outlook for Belize

Valid Time: March 19 - 26, 2012

Feature(s) of Interest:

The feature of interest this week will be a relatively stable and fresh Easterly to South-easterly airflow over the NW Caribbean, generated by broad West Atlantic High pressure system and a frontal low over northern Mexico and Texas. The High Pressure system will weaken as we move into the weekend, resulting in a weak pressure gradient, conducive to lighter easterly winds and warmer daytime temperatures.

We can therefore expect seasonally fair and sunny weather to continue through this week, with some brief daytime showers, especially in the central coastal areas during the morning hours, and over inland regions during the afternoon. It will become increasingly warmer and drier as we move into the weekend.

Daily rainfall accumulations during this week will be minimal, ranging from 0.01-0.10 of-an-inch, especially over central regions and the hills. In short, the 2012 Dry Season will continue across the nation over the next seven days. The best chance for showers in the interior will be on Wednesday and Sunday.

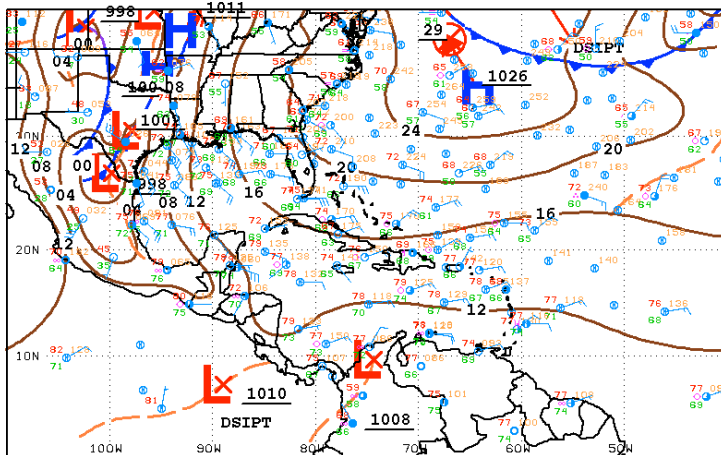


Fig. 1a NHC Surface map valid for 12:00 am, Tuesday, March 20, 2012, showing strong ridge of high pressure from the western Atlantic south-westward into the Gulf of Mexico and Cuba. Frontal lows dominate northern Mexico and Texas. Seasonally stable SE'ly airflow prevailing over Belize.



06Z SOUTHWEST NORTH ATLANTIC SFC ANALYSIS
ISSUED:
Tue Mar 20 08:51:32 UTC 2012

NATIONAL HURRICANE CENTER
MIAMI, FLORIDA
BY TRFB ANALYSIS: MKH
COLLABORATING CENTERS: NHC OPC HPC

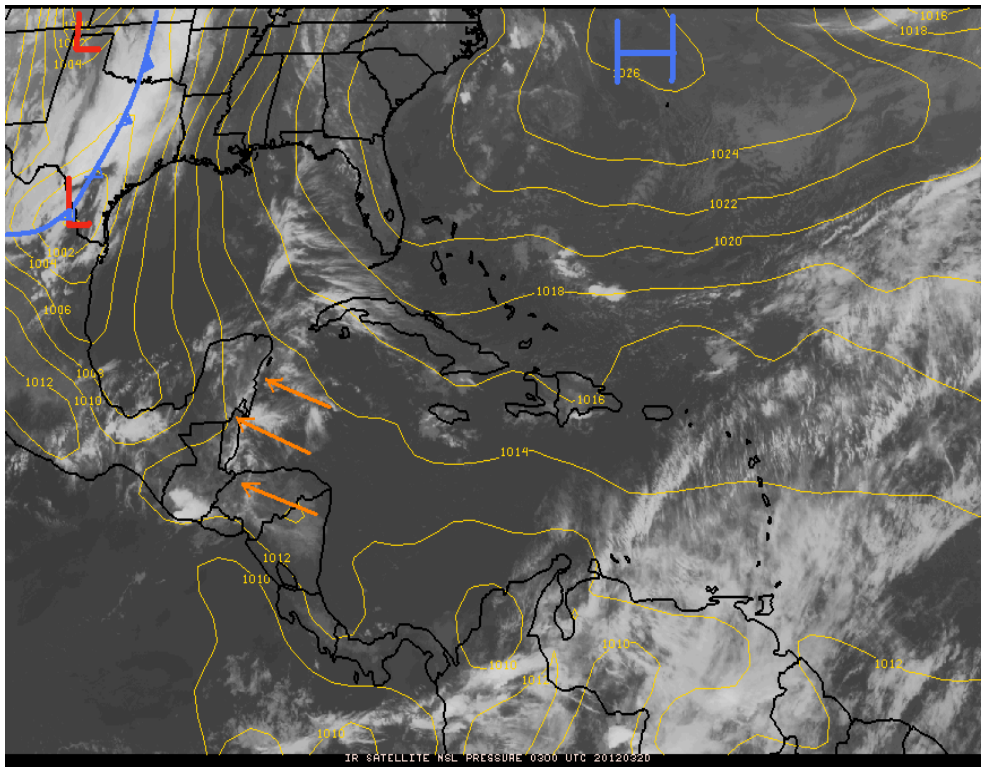


Fig. 1b Surface map and GOES IR Satellite picture valid for 3:00 am, Tuesday, March 20, 2012, showing ridge of high pressure from the Atlantic into the NW Caribbean, generating a seasonal SE'ly airflow over Belize. Shallow cloud patches are evident over and offshore Yucatan and Belize.

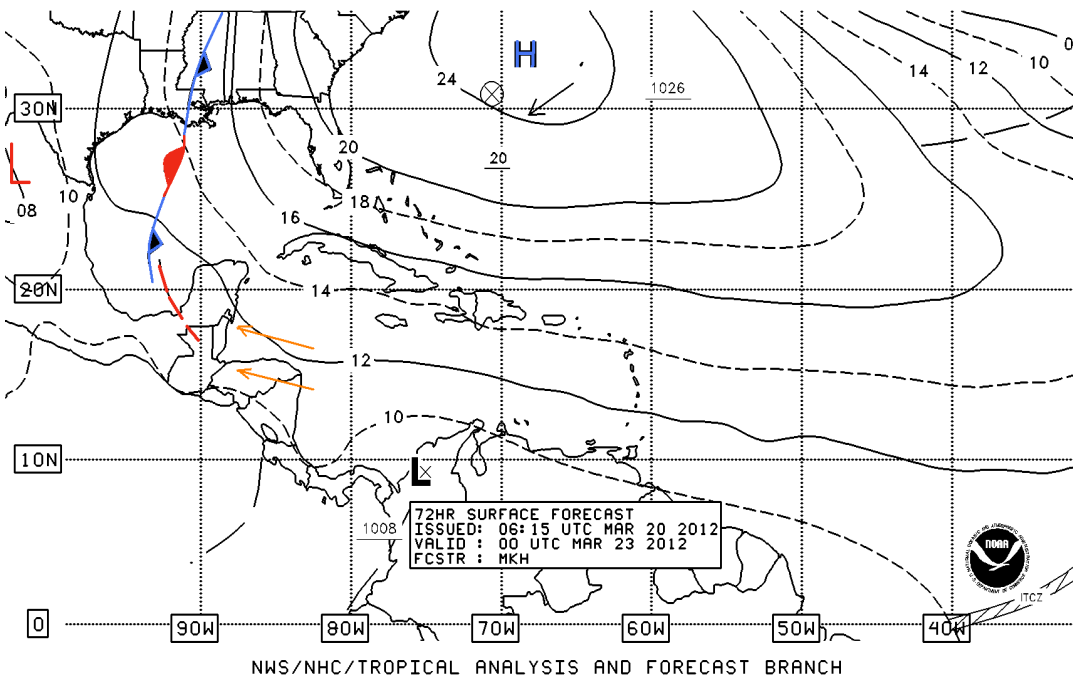


Fig. 2 NHC 72-hour forecast surface map valid for 6:00 pm Thursday, March 23, 2012 showing broad, west Atlantic High pressure system and a weakening ridge of High pressure extending over the NW Caribbean. This pattern will be generating a fresh and dry Southeasterly breeze over Belize.

03/20/12 06UTC 120HR FCST VALID Sun 03/25/12 06UTC NCEP/NHS/NOAA

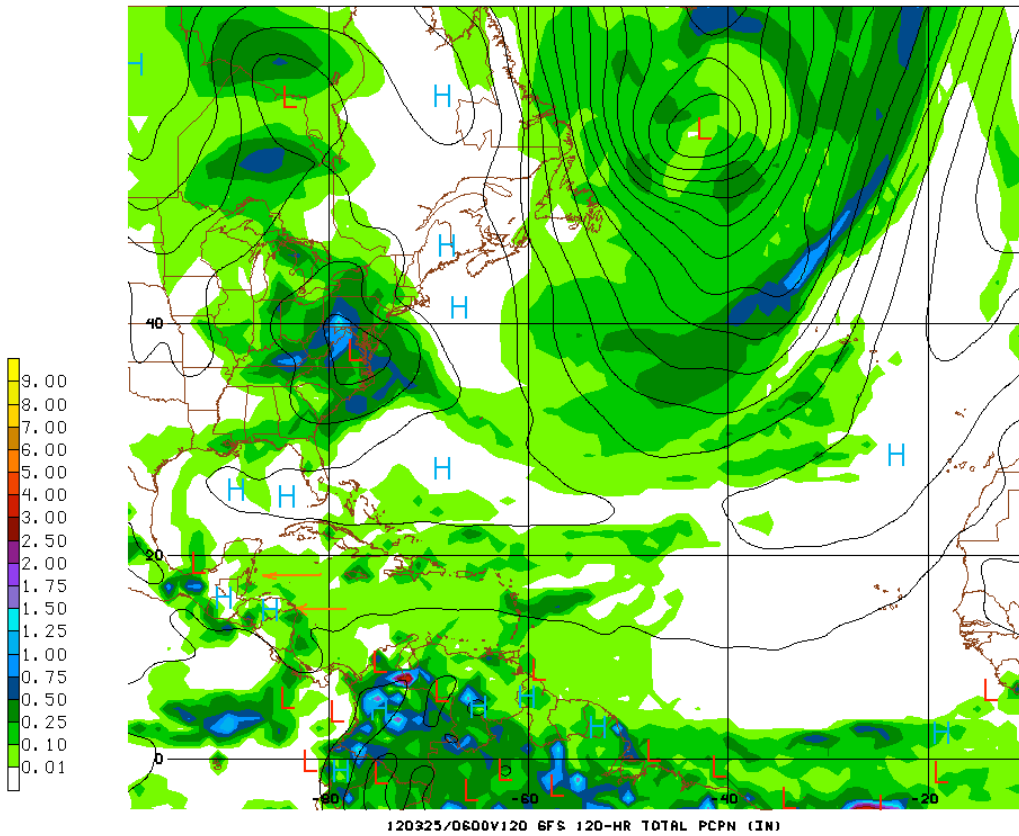


Fig. 3 GFS model 120-hour rainfall projection, showing previous 24-hour rainfall accumulations of 0.10-0.25 of-an- inch of rainfall over central coast Belize, ending at of 12:00 am, Sunday, March 25, 2012, as a weak E'ly airflow prevails across the NW Caribbean and Belize.

03/20/12 06UTC 120HR FCST VALID SUN 03/25/12 06UTC NCEP/NHS/NOAA

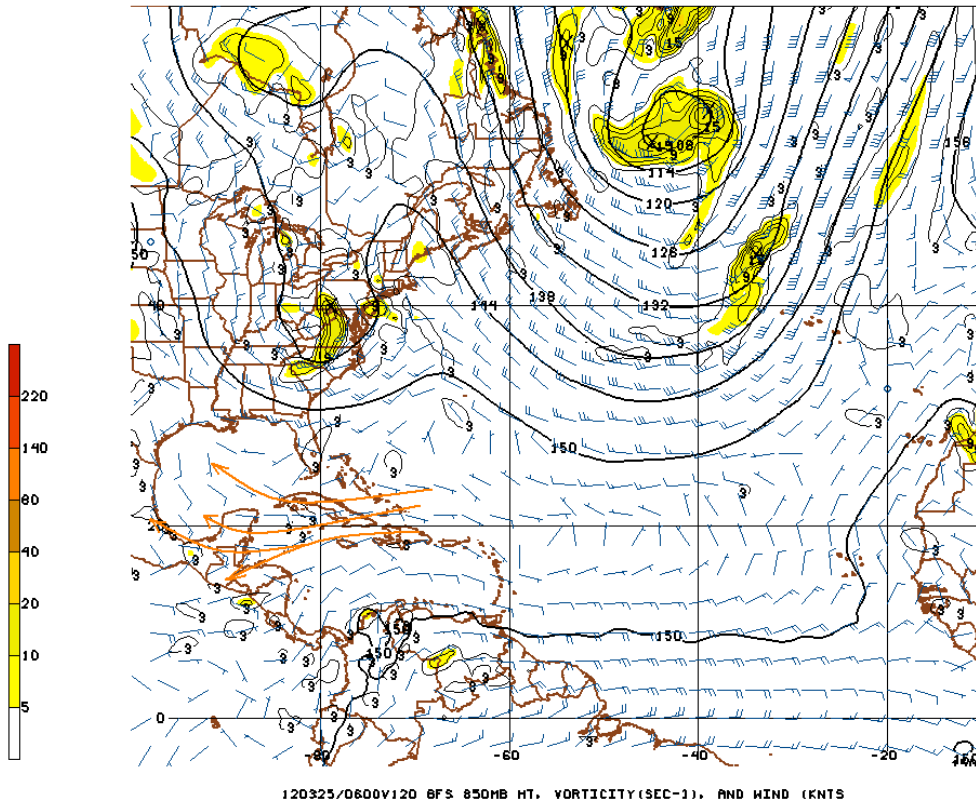


Fig. 4 GFS Model 850 mb (5,000 ft) level 120 hour vorticity projection valid for 12:00 am Sunday, Mar. 25, 2012, showing weakening west Atlantic High generating an easterly to east-northeasterly airflow over the NW Caribbean and Belize

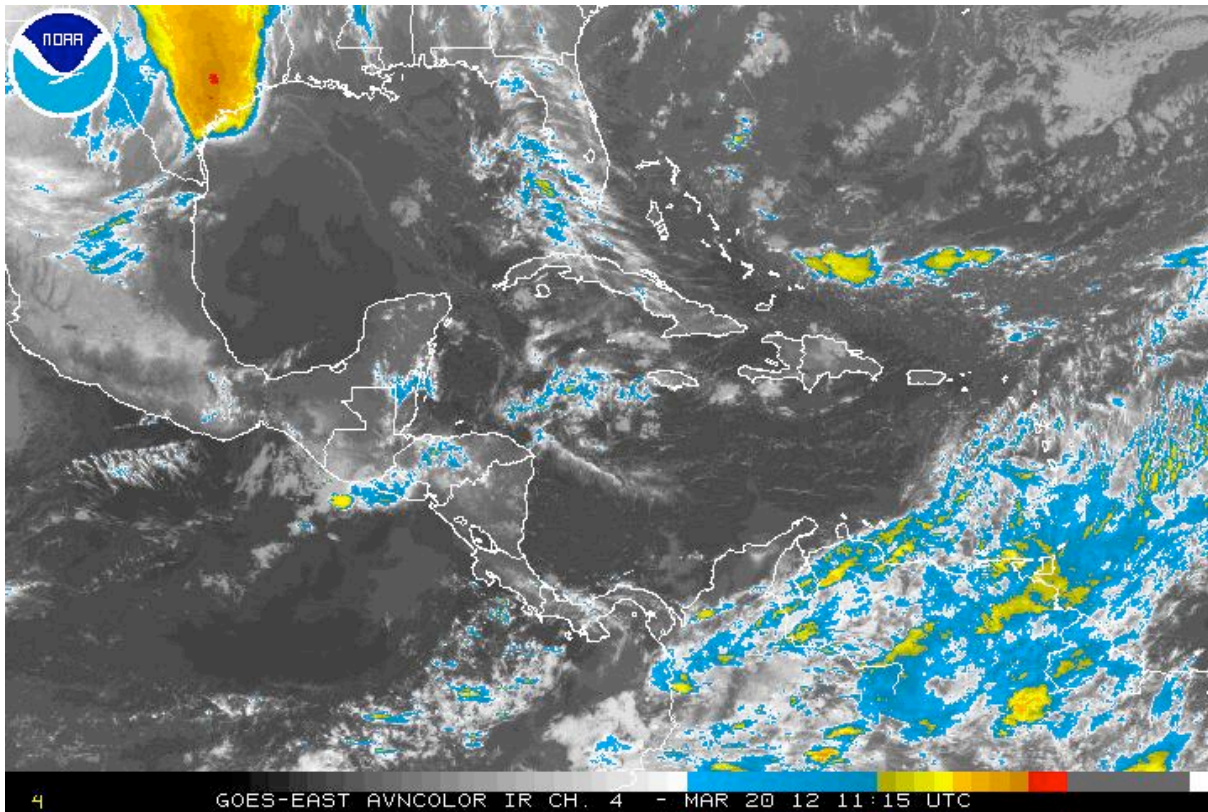


Fig. 5 GOES IR satellite image valid for 5:15 am, Tuesday, March 20, 2012, showing patchy rainclouds over northern Belize and over the NW Caribbean WSW of Jamaica.

Belize Five-day Outlook for Agriculture and Industry...

Mon	Tue	Wed	Thu	Fri	Sat	Sunday
Mar. 19, 2012	Mar. 20, 2012	Mar. 21, 2012	Mar. 22, 2012	Mar. 23, 2012	Mar. 24, 2012	Mar. 25, 2012
Sunny with cloudy spells and mild. Isolated, brief showers	Sunny with cloudy spells and mild. Isolated, brief showers	Sunny and warm. Isolated showers	Sunny and warm. Isolated showers	Sunny and warm. Isolated showers	Sunny and warm. Isolated showers	Sunny with cloudy spells and mild. Isolated, brief showers
Rainfall: 0.10-0.25 of-an-inch	Rainfall: 0.10-0.25 of-an-inch	Rainfall: 0.01-0.10 of-an-inch	Rainfall: 0.01-0.10 of-an-inch	Rainfall: 0.01-0.10 of-an-inch	Rainfall: 0.01-0.10 of-an-inch	Rainfall: 0.10-0.25 of-an-inch mostly central coast

Monday
Mar. 19, 2012

R. Santos, Agrometeorologist/Hydrologist