

Weekly Weather Outlook for Belize

Valid Time: April 9 – April 16, 2012

Feature(s) of Interest:

A surface trough of low pressure extending from northern Belize north-westward across SW Yucatan and the central Gulf of Mexico, is under a favourable divergent pattern aloft, and will favour outbreaks of some thunderstorms over the next 24-48 hours. These features will gradually fade away on Wednesday, giving way to a more stable and warmer south-easterly airflow over the NW Caribbean and Belize.

Hence, we can expect seasonally fair and sunny weather to continue over all districts and coastal waters of Belize on Wednesday through the up-coming weekend. The best chance of a few showers and afternoon thunderstorms will be later on Monday and Tuesday.

Daily rainfall accumulations during will be in the range of 0.10-0.25 of-an-inch over north-western and western areas on Monday and Tuesday. Elsewhere, the daily rainfall totals will be 0.01- 0.10 of-an-inch during most of this working week and the weekend.

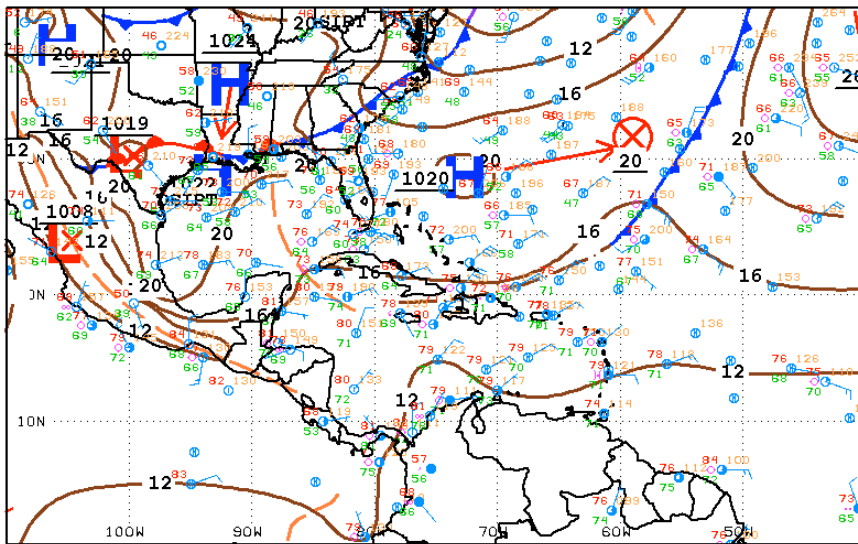


Fig. 1a NHC Surface map valid for 9:00 pm, Monday, April 9, 2012, showing surface trough extending through the Yucatan Channel to the north-central Gulf of Mexico. An unstable NE'ly airflow prevails over Belize.



06Z SOUTHWEST NORTH ATLANTIC SFC ANALYSIS
ISSUED:
Tue Apr 10 04:13:59 UTC 2012

NATIONAL HURRICANE CENTER
MIAMI, FLORIDA
BY TAFB ANALYST: MT
COLLABORATING CENTERS: NHC OPC HPC

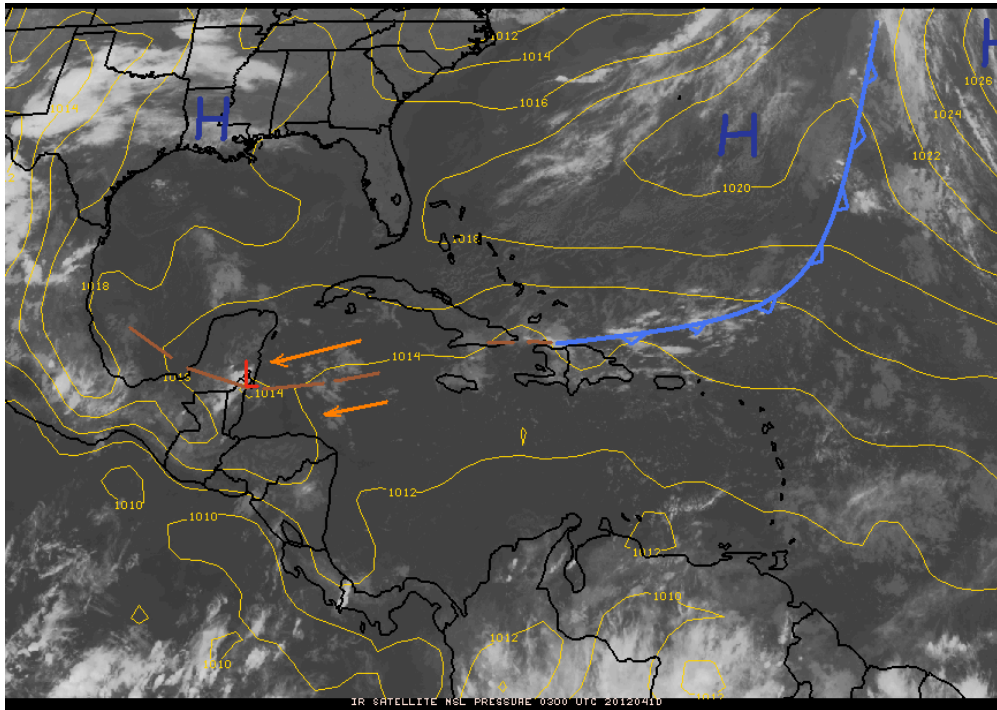


Fig. 1b Surface map and GOES IR Satellite picture valid for 9:00 pm, Monday, April 9, 2012, showing weak surface trough of low pressure extending through northern Belize and SW Yucatan, coupled with divergent flow aloft. This pattern will continue to favour some thunderstorm outbreaks on Tuesday.

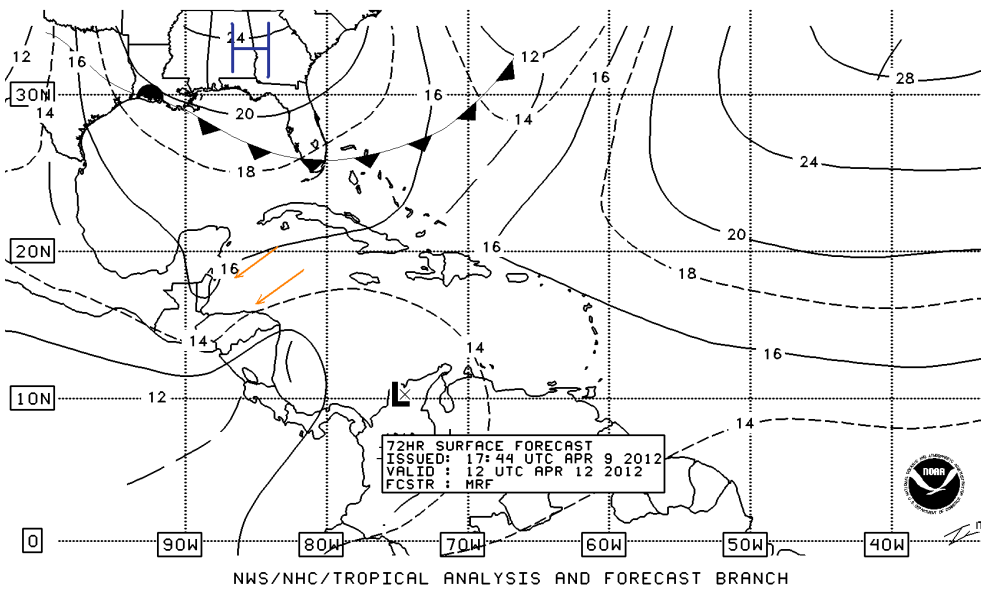


Fig. 2 NHC 72-hour forecast surface map valid for 6:00 am Thursday, April 12, 2012 showing continental High pressure system building SE over the USA and NE Gulf of Mexico. And inducing an unstable NE'ly airflow over the NW Caribbean.

04/10/12 00UTC 04BHR FCST VALID Thu 04/12/12 00UTC NCEP/NWS/NOAA

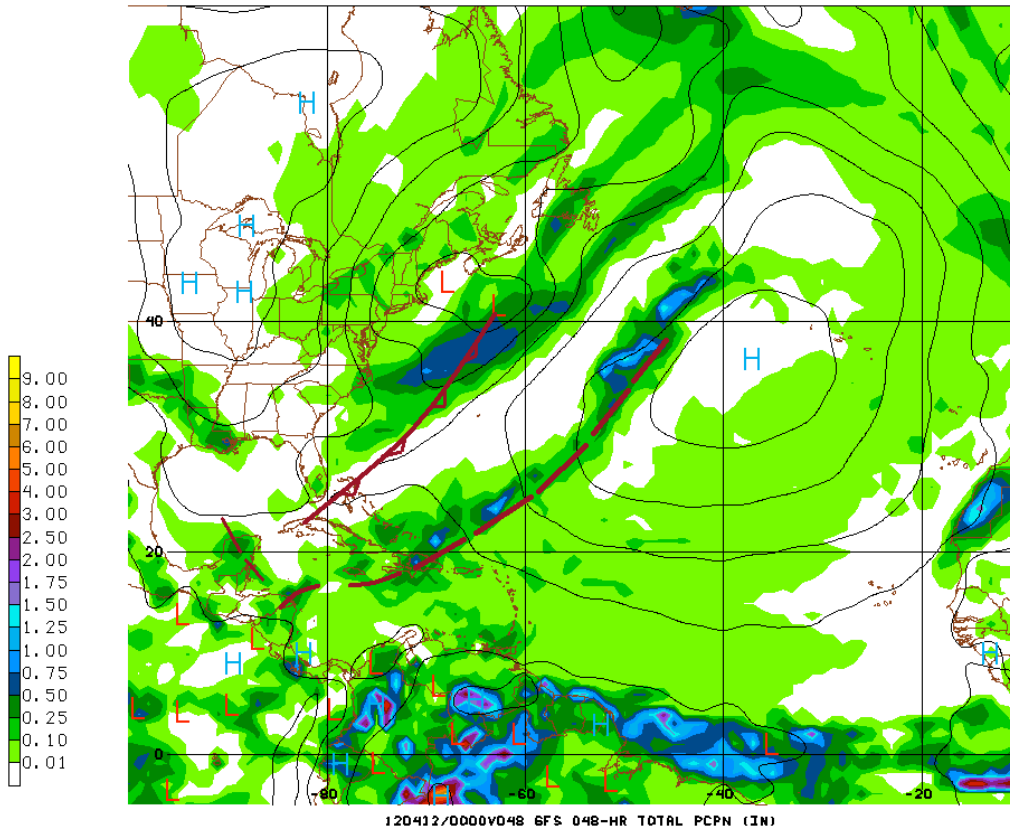


Fig. 3 48-hour rainfall projection of the GFS model (valid Wed. 6:00 pm) showing previous 24-hour rainfall accumulations of 0.10-0.25 of-an- inch of rainfall over NW and northern Belize, as weak surface trough lingers over Yucatan and northern Belize.

Belize Five-day Outlook for Agriculture and Industry...

Mon	Tue	Wed	Thu	Fri	Sat	Sunday
Apr. 9, 2012	Apr. 10, 2012	Apr. 11, 2012	Apr. 12, 2012	Apr. 13, 2012	Apr. 14, 2012	Apr. 15, 2012
Sunny with cloudy spells Isolated thunderstorms	Sunny with cloudy spells Isolated thunderstorms	Sunny and hot. Isolated showers	Sunny, hot and dry	Sunny, hot and dry	Sunny, hot and dry	Sunny, hot and dry
Rainfall: 0.10-0.25 of-an-inch	Rainfall: : 0.10-0.25 of-an-inch	Rainfall: 0.01-0.10 of-an-inch	Rainfall: 0.01-0.10 of-an-inch	Rainfall: 0.01-0.10 of-an-inch	Rainfall: 0.01-0.10 of-an-inch	Rainfall: 0.01-0.10 of-an-inch

Monday
April 9, 2012

R. Antos, Agrometeorologist/Hydrologist