

WEEKLY WEATHER OUTLOOK BELIZE, CENTRAL AMERICA

PERIOD: Monday-Monday, Sep. 10-17, 2012

DATE ISSUED: Monday, Sep. 10, 2012 – 9:30 am

RFrutos

EcoSolutions & Services

SYNOPSIS: An upper level low near northern Yucatan this morning is forecast to drift SE into the NW Caribbean over the next 24-36 hours and gradually dissipate. This feature will continue to support a few showers and some thunderstorms over and offshore Belize through Tuesday. A weak low pressure system will develop over the extreme NW Caribbean and Belize on Wednesday, but the lack of moisture and unfavorable environmental conditions will not support much convective activity with this system. Otherwise, an east to east-northeasterly airflow will prevail across Belize during this working week through the upcoming weekend, associated with a weak pressure pattern over the NW Caribbean.

Convergence of moisture is forecast in the SW Caribbean east of NE Nicaragua and Honduras in association with a surge in the low level easterly jet around and after mid week. However, organization of this disturbance is not expected as it moves over land across northern Nicaragua and Honduras by Thursday and Friday.

No tropical cyclone is expected to form or move into the Caribbean region during the next seven days. September 10th marks the historical peak of the North Atlantic Hurricane season. In the Atlantic we have tropical storm Leslie heading toward Newfoundland, while hurricane Michael is located in the central Atlantic west of the Azores, heading westwards. A tropical disturbance is located midway between the Caribbean and the Cape Verde Islands. This system has a 90 % chance of becoming a tropical cyclone over the next 48 hours as it drifts WNW at 15 to 20 mph. The forecast track has this disturbance veering NW away from the Caribbean. So, the **Caribbean** will remain **remarkably quiet over the next seven days**. Nevertheless, we must remain *vigilant* as we move into the latter part of September and the month of October, when the preferential areas for tropical cyclone formation shifts to the western Caribbean and the Gulf of Mexico.

Rainfall rates over Belize will be in the range of 0.50-0.75 of-an-inch on Sunday, Monday, and Tuesday in the heavier showers and thunderstorms, especially along the coast and in the South. Daily rainfall rates will decrease on Wednesday through the weekend, with daily accumulations of only 0.10-0.25 of-an-inch in locally isolated showers or isolated thunderstorms, especially in the interior and in the hills. Rainfall will be minimal elsewhere during this period.

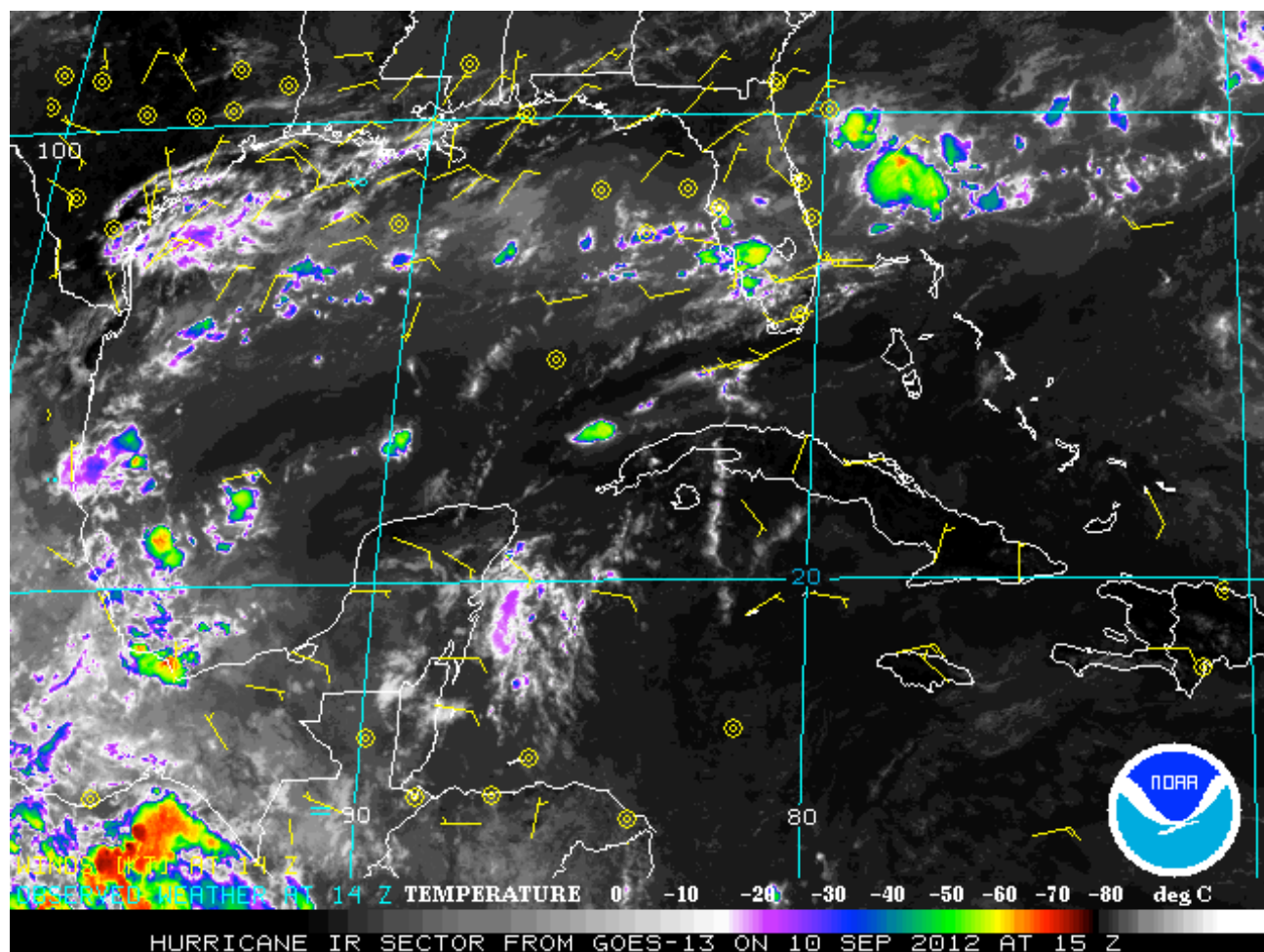


Figure 1 GOES IR Satellite picture for 9:00 am, Monday Sep. 10, 2012, showing weak convective activity off shore Yucatan and central Belize. Otherwise the western and central Caribbean are free of deep convection.

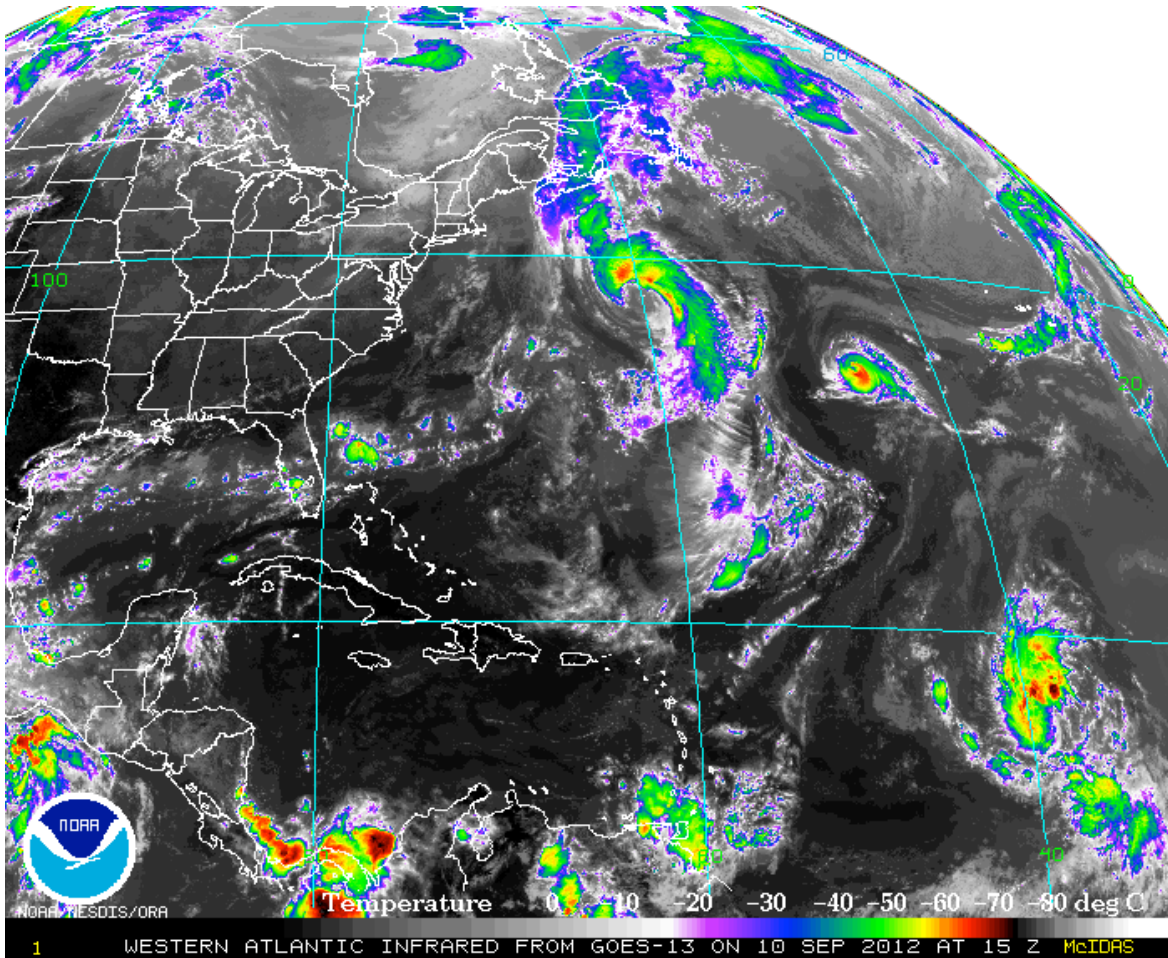


Figure 2 IR Satellite picture valid for 9:00 am September 10, 2012 showing minor convection off the coast of Yucatan and central Belize. Vigorous convective activity evident over Panama, off the Costa Rica and in the extreme SE Caribbean.

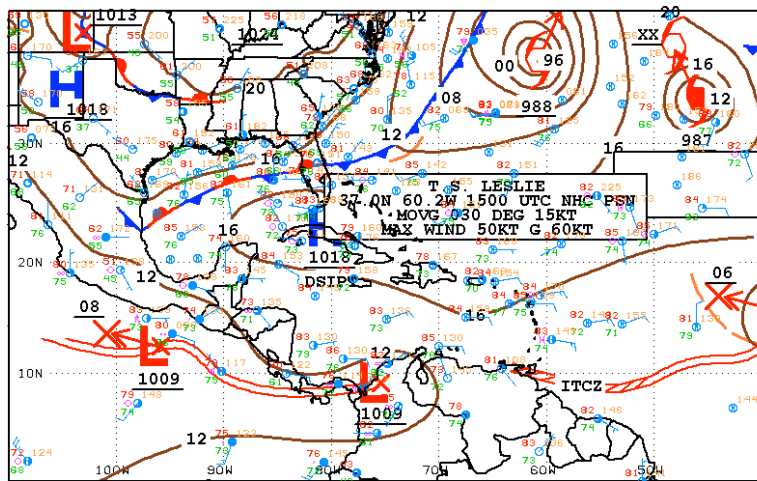









Figure 3 Surface map valid for 9:00 am Monday, Sep 10, 2012, showing weak ridge of high pressure from the Atlantic into the SE Gulf of Mexico. Weak pressure gradient over the Caribbean.



12Z SOUTHWEST NORTH ATLANTIC SFC ANALYSIS
 ISSUED:
 Mon Sep 10 14:56:51 UTC 2012

NATIONAL HURRICANE CENTER
 MIAMI, FLORIDA
 BY TAFB ANALYST: FORMOSA
 COLLABORATING CENTERS: NHC OPC HPC

Belize Seven-day Outlook for Agriculture and Industry...

Sun	Mon	Tue	Wed	Thu	Fri	Sat
Sep. 9, 2012	Sep. 10, 2012	Sep. 11, 2012	Sep. 12, 2012	Sep. 13, 2012	Sep. 14, 2012	Sep. 15, 2012
						
Cloudy spells with a few showers & thunderstorms especially inland and north	Cloudy spells with a few showers & thunderstorms especially over coastal areas & South	Cloudy spells with a few showers & thunderstorms especially over coastal areas & South	Cloudy at times and hot. Isolated showers & thunderstorms	Sunny with isolated showers	Sunny with isolated showers	Sunny with isolated showers
Rainfall: 0.50-0.75 of-an-inch	Rainfall: 0.50-0.75 of-an-inch	Rainfall: 0.10- 0.25 of-an-inch	Rainfall: 0.10 – 0.25 of-an-inch	Rainfall: 0.01- 0.10 inches	Rainfall: 0.01–0.10 inch	Rainfall: 0.01-0.10 of-an-inch

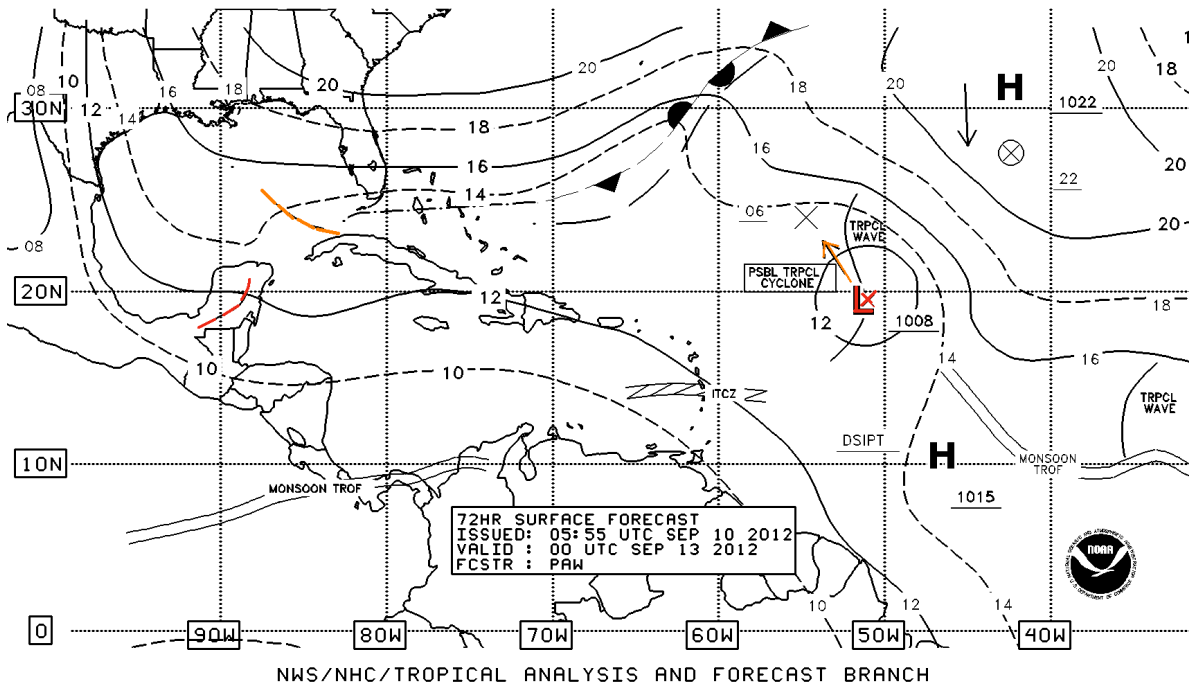
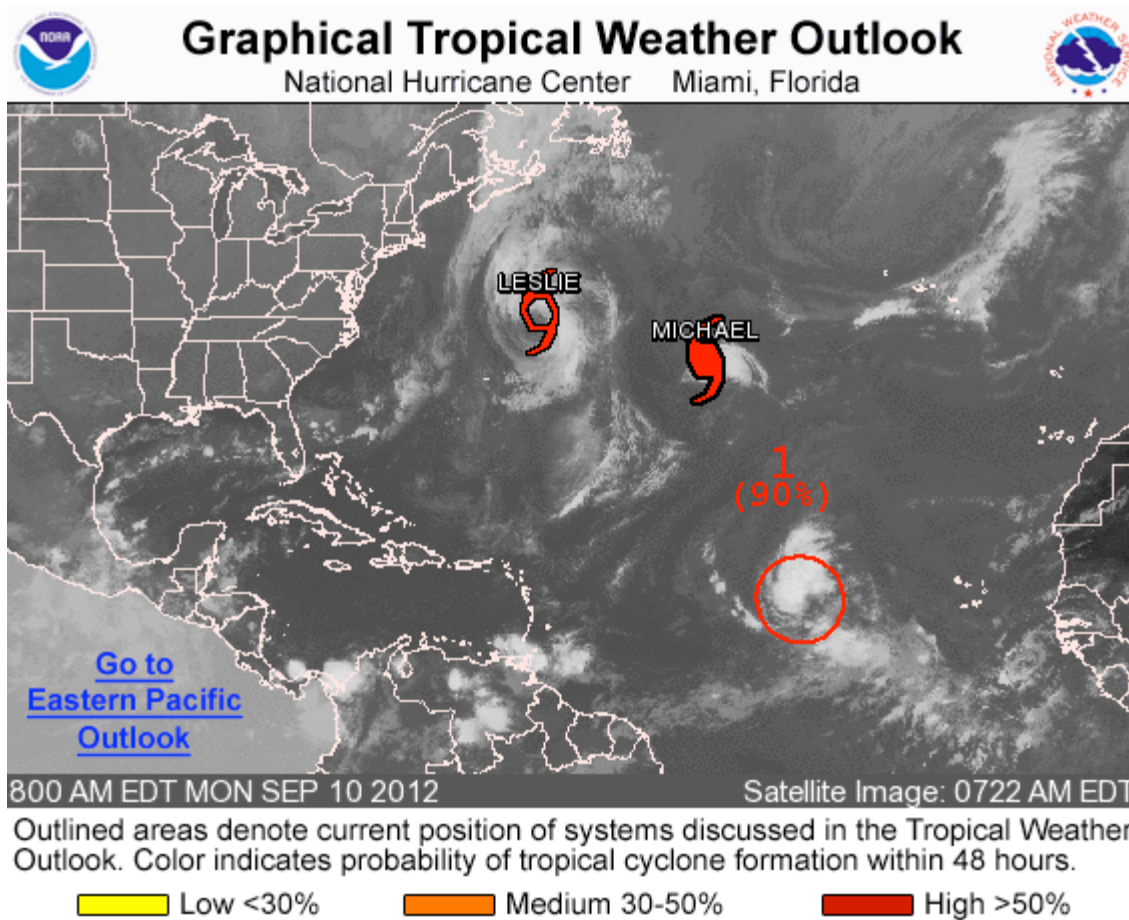


Figure 4 NHC 72-hr forecast surface map, valid for 6:00 pm Wednesday, Sep. 12, 2012, showing weak surface trough over SW Yucatan. Weak pressure gradient over the NW Caribbean.

OUTLOOK FOR THE MAIN DEVELOPMENT REGION (MDR) OF THE TROPICAL ATLANTIC BASIN



TROPICAL WEATHER OUTLOOK
NWS NATIONAL HURRICANE CENTER MIAMI FL
800 AM EDT MON SEP 10 2012

FOR THE NORTH ATLANTIC...CARIBBEAN SEA AND THE GULF OF MEXICO...
THE NATIONAL HURRICANE CENTER IS ISSUING ADVISORIES ON TROPICAL
STORM LESLIE...LOCATED ABOUT 805 MILES WEST-SOUTHWEST OF CAPE RACE
NEWFOUNDLAND... AND ON HURRICANE MICHAEL...LOCATED ABOUT 1065 MILES
WEST OF THE AZORES.

1. SATELLITE IMAGES INDICATE THAT A TROPICAL DEPRESSION COULD BE
FORMING IN THE EASTERN ATLANTIC ABOUT 855 MILES WEST OF THE CAPE
VERDE ISLANDS...AND IF THIS TREND CONTINUES...ADVISORIES WILL BE
INITIATED LATER TODAY. THIS SYSTEM HAS A HIGH CHANCE...90
PERCENT...OF BECOMING A TROPICAL CYCLONE DURING THE NEXT 48 HOURS
AS IT MOVES WEST-NORTHWESTWARD AT 15 TO 20 MPH.

ELSEWHERE...TROPICAL CYCLONE FORMATION IS NOT EXPECTED DURING THE
NEXT 48 HOURS.

FORECASTER AVILA

PEAK OF THE NORTH ATLANTIC BASIN HURRICANE SEASON

