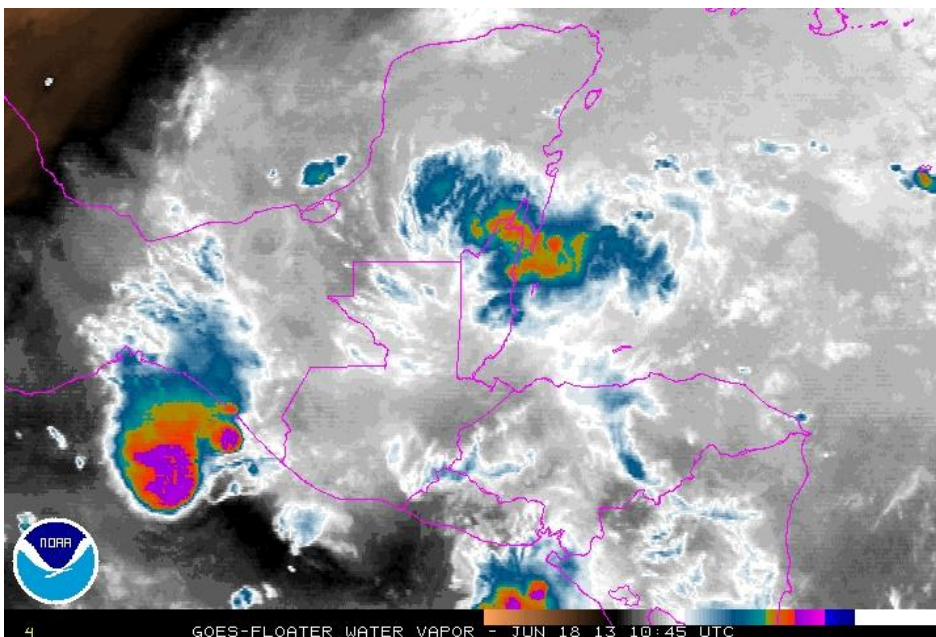
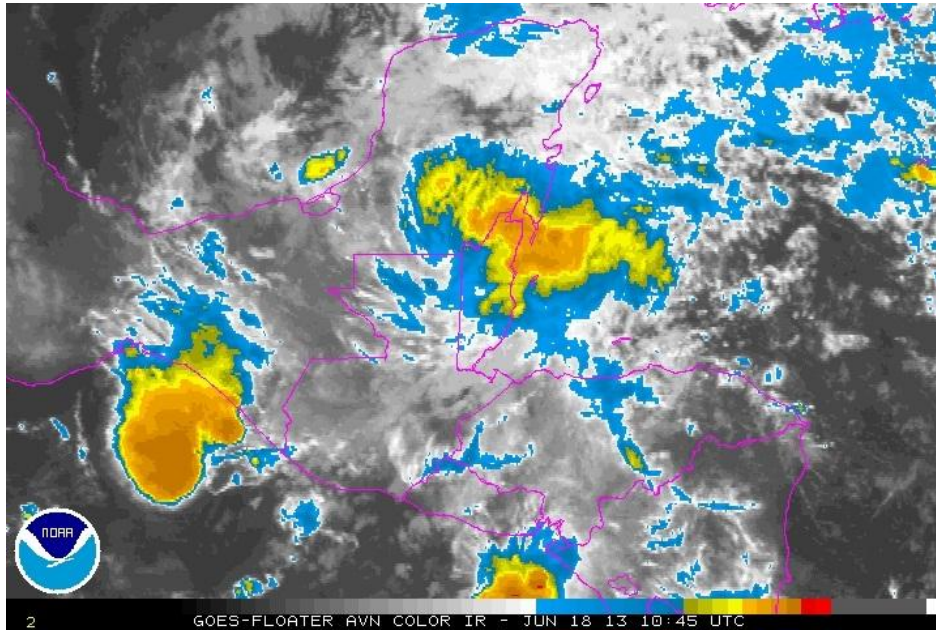


WEEKLY OUTLOOK

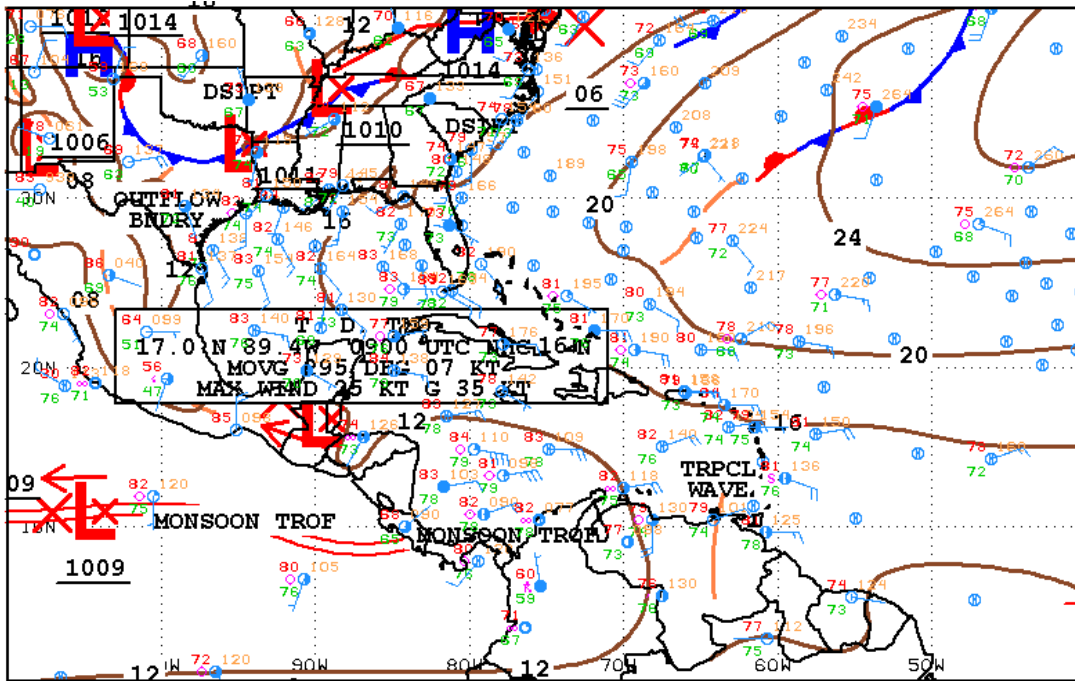
Valid: June 17-24, 2013

Issue: 6:00 am Tuesday, June 18, 2013

SYNOPSIS for 6:00am Tuesday, June 18, 2013 TROPICAL DEPRESSION TWO MOVING INLAND OVER NORTHERN GUATEMALA THIS MORNING. AT 500 AM EDT...0900 UTC...3:00 AM BELIZE THE CENTER OF TROPICAL DEPRESSION TWO WAS LOCATED NEAR LATITUDE 17.0 NORTH...LONGITUDE 89.4 WEST. THE DEPRESSION IS MOVING TOWARD THE WEST-NORTHWEST NEAR 8 MPH...13 KM/H. THIS GENERAL MOTION IS EXPECTED TO CONTINUE FOR THE NEXT DAY OR SO. THIS SYSTEM WILL CONTINUE TO GENERATE HEAVY RAINS OVER BELIZE, NORTHERN GUATEMALA AND EASTERN MEXICO TODAY, WITH DAILY ACCUMULATION OF 3 TO 5 INCHES, WITH MAXIMUM IN THE HILLY TERRAIN OF NEAR 10 INCHES THROUGH WEDNESDAY MORNING.



GOES satellite IR and Water Vapor images for 3:00 am Tuesday, June 18, 2013, showing deep convection over northern and central Belize and coastal waters associated with TD two centered over eastern Peten, Guatemala this morning.



06Z SOUTHWEST NORTH ATLANTIC SFC ANALYSIS
ISSUED:
Tue Jun 18 08:54:21 UTC 2013

NATIONAL HURRICANE CENTER
MIAMI, FLORIDA
BY TAFB ANALYST: MT
COLLABORATING CENTERS: NHC OPC WPC

Figure 1a. NHC Surface Weather Map for 3:00 am, Tuesday, June 18, 2013, showing location of Tropical Depression Two near the border of Belize and Peten, Guatemala. Weak pressure gradient across the SW Caribbean and northern Central America, while a tropical wave is evident in the SE Caribbean heading westward.

TROPICAL WEATHER SCENARIO: AS TROPICAL DEPRESSION TWO DRIFT WESTWARD ACROSS SOUTHERN MEXICO DURING THE NEXT 24-48 HOURS, A BROAD BUT WEAK LOW PRESSURE PATTERN WILL PERSIST OVER THE WESTERN CARIBBEAN AND NORTHERN CENTRAL AMERICA, CONDUCEIVE TO MORE SHOWERY WEATHER OVER THE REGION. A WEAK TROPICAL WAVE WILL BE TRACKING WESTWARD OVER THE SOUTHERN CARIBBEAN THIS WEEK, REACHING THE COAST OF COSTA RICA AND NICARAGUA BY THURSDAY EVENING AND EARLY FRIDAY.

OUTLOOK: THE GFS FORECAST MODEL (24-120-HR) RESOLVE PERSISTENT RAINFALL OVER NORTHERN CENTRAL AMERICA AND BELIZE DURING THIS WORKING WEEK AND THROUGH THE UP-COMING WEEKEND. THE RAINS ASSOCIATED WITH RETREATING **TROPICAL DEPRESSION TWO** WILL GRADUALLY DIMINISH OVER THE NEXT 36-48 HOURS, BUT DAILY ACCUMULATIONS OF 2-3 INCHES ARE EXPECTED IN THE HILLY AND NORTHERN AREAS OF THE BELIZE ON TUESDAY AND WEDNESDAY, TAPERING OFF ON THURSDAY. SHOWERS WILL THEN BE CONCENTRATED OVER SOUTHERN DISTRICTS AND ALONG THE COAST AND CAYES ON THURSDAY THROUGH SUNDAY, AS INSTABILITY PERSIST OVER THE NW CARIBBEAN REGION IN THE FORM OF A LOW LEVEL WIND MAXIMUM AND A TRAIN OF VORTICITY MAXIMUM EXTENDING FROM THE SOUTHERN CARIBBEAN TO SOUTHERN MEXICO. ALSO, A RETROGRESSING UPPER LEVEL TROUGH WILL MOVE ACROSS THE WESTERN CARIBBEAN BY SATURDAY SUPPORTING MORE SHOWERY WEATHER.

DAILY RAINFALL AMOUNTS OF 0.25-0.75 OF AN INCH ARE PROJECTED OVER MOST DISTRICTS DURING THE REST OF THIS WEEK THROUGH MONDAY OF NEXT WEEK, WITH LOCALLY HIGHER RATES OF 1.25 - 3.00 INCHES OVER AREAS OF THE COAST AND NORTHERN REGIONS ON TUESDAY AND WEDNESDAY. THE RAINS WILL THEN SHIFT TO AREAS OF THE TOLEDO AND STANN CREEK DISTRICTS, AND SOUTHERN AND CENTRAL COASTAL AREAS LATER ON THURSDAY THROUGH SUNDAY, WITH DAILY TOTALS OF 0.50-1.50 INCH AND LOCALLY HIGHER AMOUNTS IN THE HILLY TERRAIN. SOIL MOISTURE IS ALREADY AT FIELD CAPACITY, SO ADDITIONAL RAINFALL WILL PROVOKE MORE LOCALIZED FLOODING THIS WEEK AND THE WEEKEND.

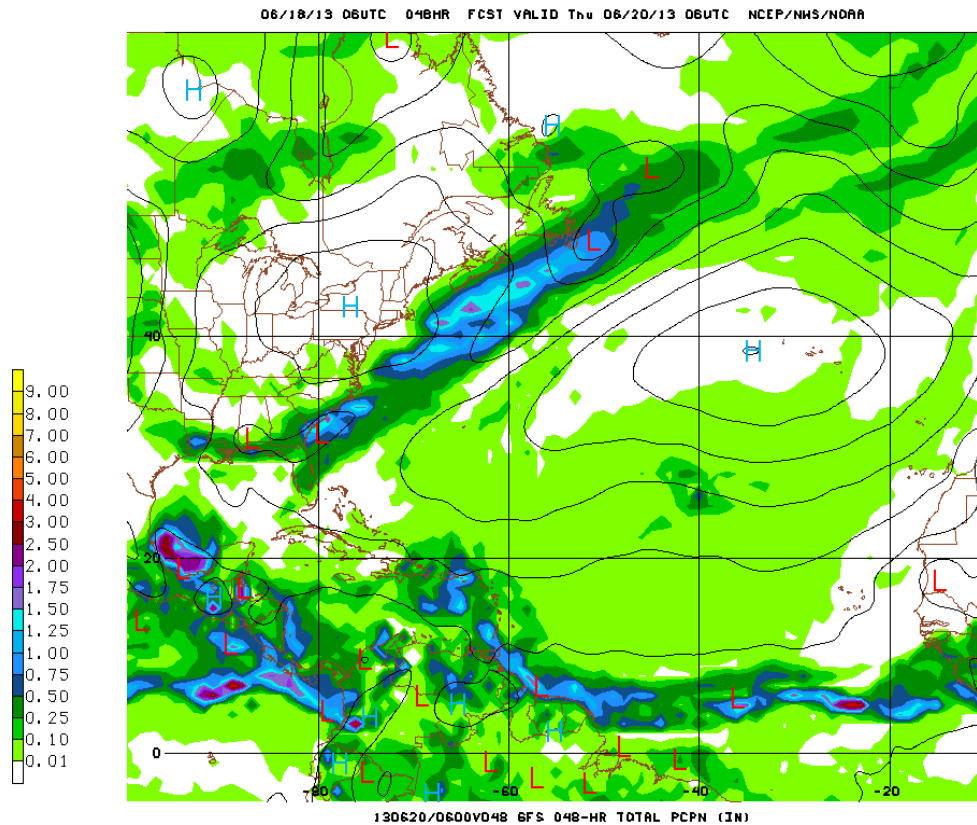


Figure 1 b. National Centre for Environmental Prediction (NCEP) GFS model 48-hour forecast precipitation map valid for period ending 12:00 am Thursday, June 20, 2013, showing Low over Belize and 24-hr rainfall accumulation ranging from 1.25 – 1.75 inch over coastal Belize

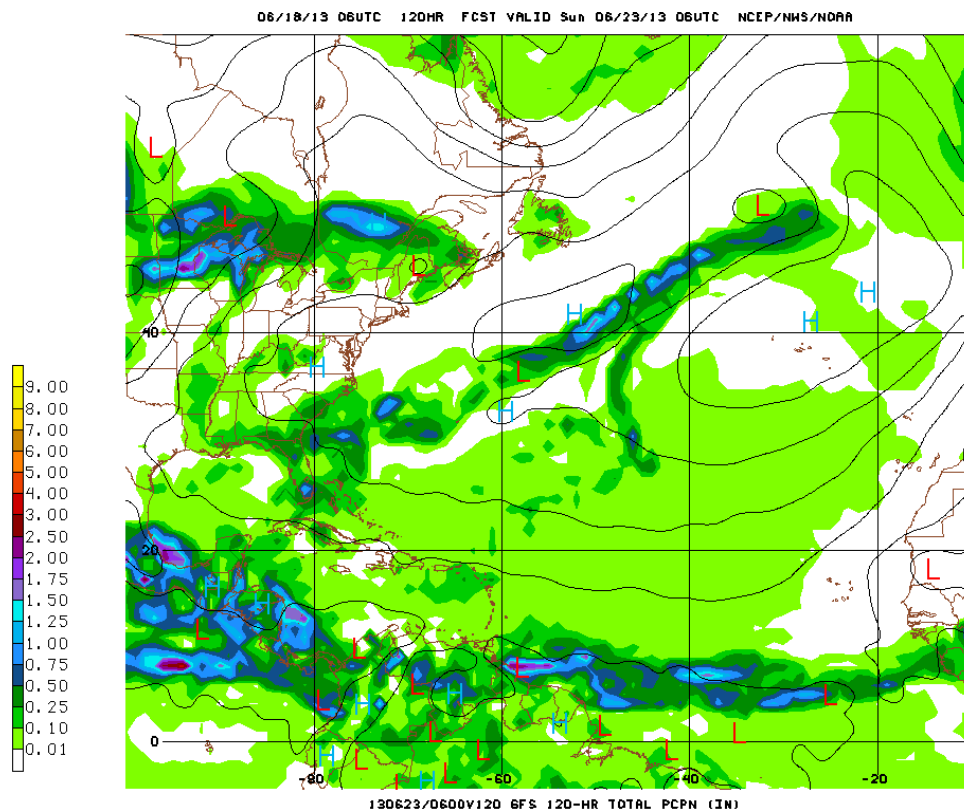


Figure 1 c. National Centre for Environmental Prediction (NCEP) GFS model 96-hour forecast precipitation map valid for period ending 12:00 am Sunday, June 23, 2013, showing persistent 24-hr rainfall accumulation of 0.75-1.50 inch per day over coastal Belize.

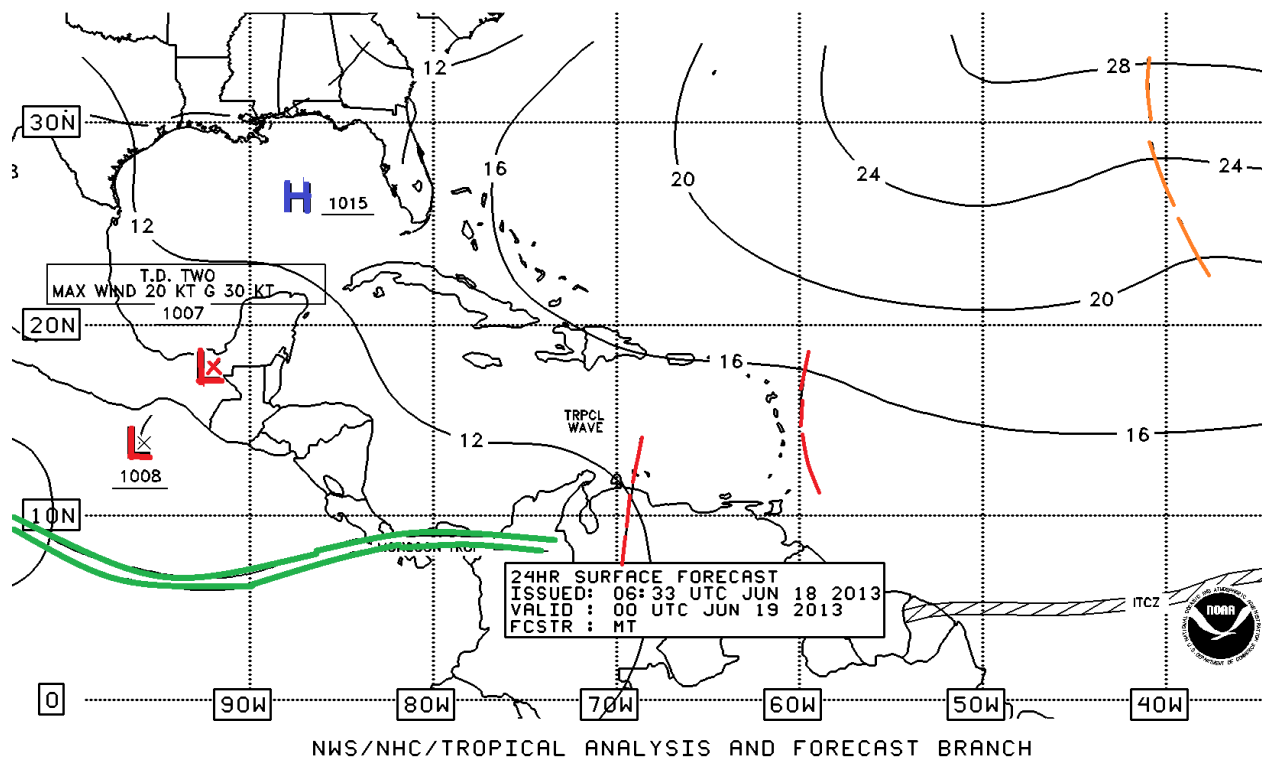


Figure 2. NHC 24-hour forecast surface weather map, valid for 6: 00 pm Tuesday, June 18, 2013, showing remnants of tropical depression two over SE Mexico. Weak pressure gradient over northern Central America.

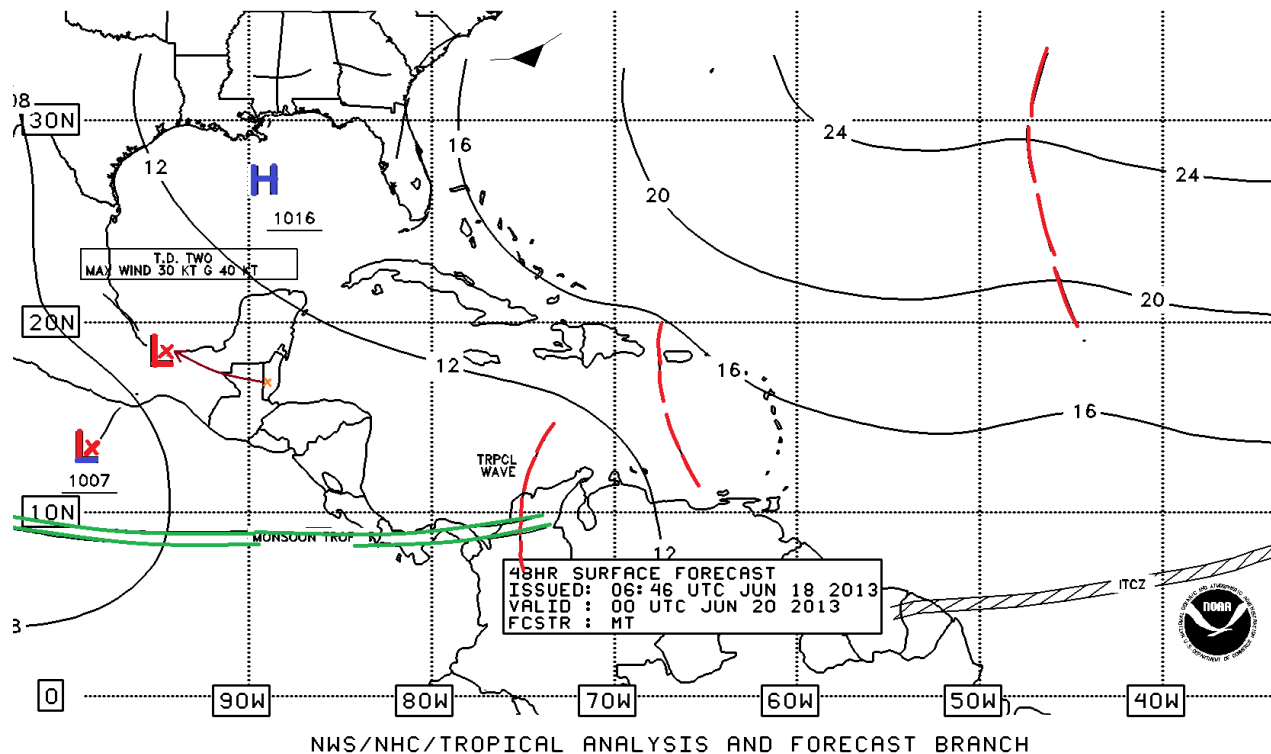


Figure 3. NHC 48-hour forecast surface weather map, valid for 6: 00 pm, Wednesday, June 19, 2013, showing low (remnants of TD 2) near the coast of southern Mexico around the Bay of Campeche. Slack pressure gradient over SW and NW Caribbean and northern Central America.

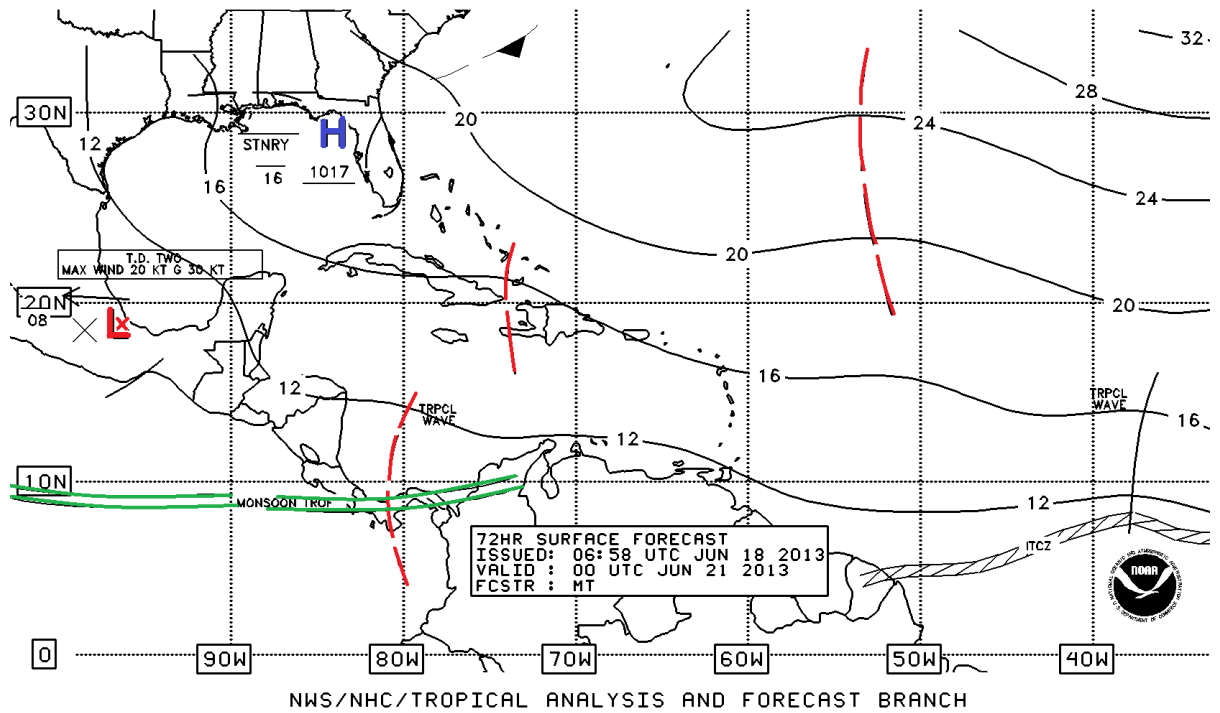


Figure 4. NHC 72-hour forecast surface weather map, valid for 6: 00 pm Thursday, June 20, 2013, showing tropical wave in the SW Caribbean heading toward the coast of northern Central America. Moist easterly airflow persist over the NW Caribbean.

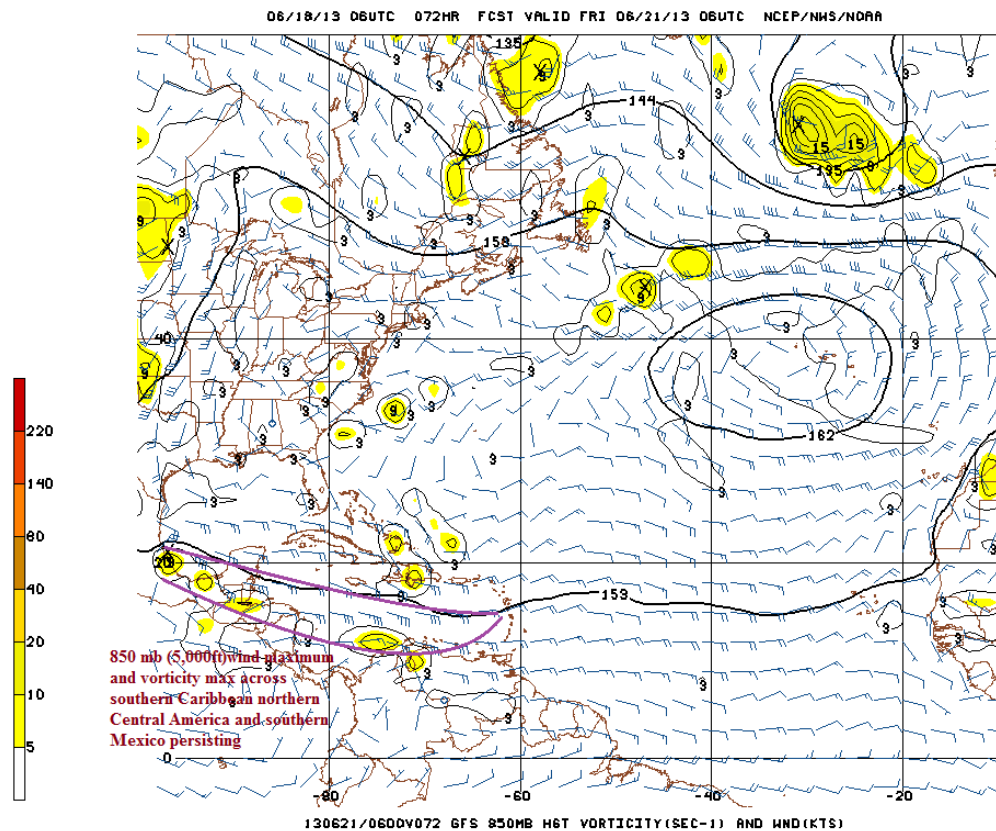


Figure 5 GFS model 850 mb (5,000 ft level), 72 hr forecast wind flow and vorticity projections valid for 12:00 am Friday, June 21, 2013, showing wind maximum and vorticity maximum patterns over southern Caribbean and northern Central America to southern Mexico, favoring convective activity

TROPICAL WEATHER OUTLOOK

BULLETIN

TROPICAL DEPRESSION TWO ADVISORY NUMBER 4
NWS NATIONAL HURRICANE CENTER MIAMI FL AL022013
500 AM EDT TUE JUN 18 2013

...DEPRESSION MOVING OVER NORTHERN GUATEMALA...
...HEAVY RAIN CONTINUES...

SUMMARY OF 500 AM EDT...0900 UTC...INFORMATION

LOCATION...17.0N 89.4W
ABOUT 30 MI...50 KM ENE OF TIKAL GUATEMALA
ABOUT 215 MI...345 KM SSE OF CAMPECHE MEXICO
MAXIMUM SUSTAINED WINDS...30 MPH...45 KM/H
PRESENT MOVEMENT...WNW OR 295 DEGREES AT 8 MPH...13 KM/H
MINIMUM CENTRAL PRESSURE...1009 MB...29.80 INCHES

WATCHES AND WARNINGS

THERE ARE NO COASTAL WATCHES OR WARNINGS IN EFFECT.

INTERESTS IN BELIZE...GUATEMALA...AND EASTERN MEXICO SHOULD MONITOR
THE PROGRESS OF THIS SYSTEM.

DISCUSSION AND 48-HOUR OUTLOOK

AT 500 AM EDT...0900 UTC...THE CENTER OF TROPICAL DEPRESSION TWO WAS
LOCATED NEAR LATITUDE 17.0 NORTH...LONGITUDE 89.4 WEST. THE
DEPRESSION IS MOVING TOWARD THE WEST-NORTHWEST NEAR 8 MPH...13
KM/H. THIS GENERAL MOTION IS EXPECTED TO CONTINUE FOR THE NEXT DAY
OR SO...FOLLOWED BY A TURN TOWARD THE WEST AND A DECREASE IN
FORWARD SPEED BY WEDNESDAY NIGHT. ON THE FORECAST TRACK...THE
CENTER OF THE DEPRESSION WILL MOVE OVER PORTIONS OF NORTHERN
GUATEMALA AND EASTERN MEXICO THROUGH TONIGHT...AND MOVE OVER THE
BAY OF CAMPECHE BY LATE WEDNESDAY.

MAXIMUM SUSTAINED WINDS REMAIN NEAR 30 MPH...45 KM/H...WITH HIGHER
GUSTS. LITTLE CHANGE IN STRENGTH IS FORECAST DURING THE NEXT DAY OR
SO WHILE THE CENTER OF THE DEPRESSION REMAINS OVER LAND. A LITTLE
STRENGTHENING IS POSSIBLE WEDNESDAY NIGHT OR EARLY THURSDAY IF THE
CENTER MOVES OFFSHORE.

THE ESTIMATED MINIMUM CENTRAL PRESSURE IS 1009 MB...29.80 INCHES.

HAZARDS AFFECTING LAND

RAINFALL...THE DEPRESSION IS EXPECTED TO PRODUCE TOTAL RAINFALL
ACCUMULATIONS OF 3 TO 5 INCHES WITH MAXIMUM AMOUNTS OF 10 INCHES
ACROSS PORTIONS OF BELIZE...GUATEMALA...AND NORTHERN HONDURAS...
ALONG WITH THE MEXICAN STATES OF VERACRUZ...TABASCO...CHIAPAS....
SOUTHERN CAMPECHE AND SOUTHERN QUINTANA ROO. THESE RAINS COULD CAUSE
LIFE THREATENING FLASH FLOODING AND MUDSLIDES...ESPECIALLY IN
MOUNTAINOUS AREAS. SOME RECENT 24-HOUR RAINFALL TOTALS INCLUDE 5.16
INCHES...131 MM...AT TELA HONDURAS...AND 3.58 INCHES...91 MM...AT

BELIZE CITY.

NEXT ADVISORY

NEXT COMPLETE ADVISORY...1100 AM EDT.

FORECASTER BRENNAN

ZCZC MIATWOAT ALL
TTAA00 KNHC DDHMM

TROPICAL WEATHER OUTLOOK
NWS NATIONAL HURRICANE CENTER MIAMI FL
800 AM EDT TUE JUN 18 2013

FOR THE NORTH ATLANTIC...CARIBBEAN SEA AND THE GULF OF MEXICO...

THE NATIONAL HURRICANE CENTER IS ISSUING ADVISORIES ON TROPICAL
DEPRESSION TWO...LOCATED INLAND OVER NORTHEASTERN GUATEMALA.

ELSEWHERE...TROPICAL CYCLONE FORMATION IS NOT EXPECTED DURING THE
NEXT 48 HOURS.

PUBLIC ADVISORIES ON TROPICAL DEPRESSION TWO ARE ISSUED UNDER WMO
HEADER WTNT32 KNHC AND UNDER AWIPS HEADER MIATCPAT2.
FORECAST/ADVISORIES ON THE DEPRESSION ARE ISSUED UNDER WMO HEADER
WTNT22 KNHC AND UNDER AWIPS HEADER MIATCMAT2.

FORECASTER CANGIALOSI

RFrutos
Meteorologist/Hydrologist
June 18, 2013